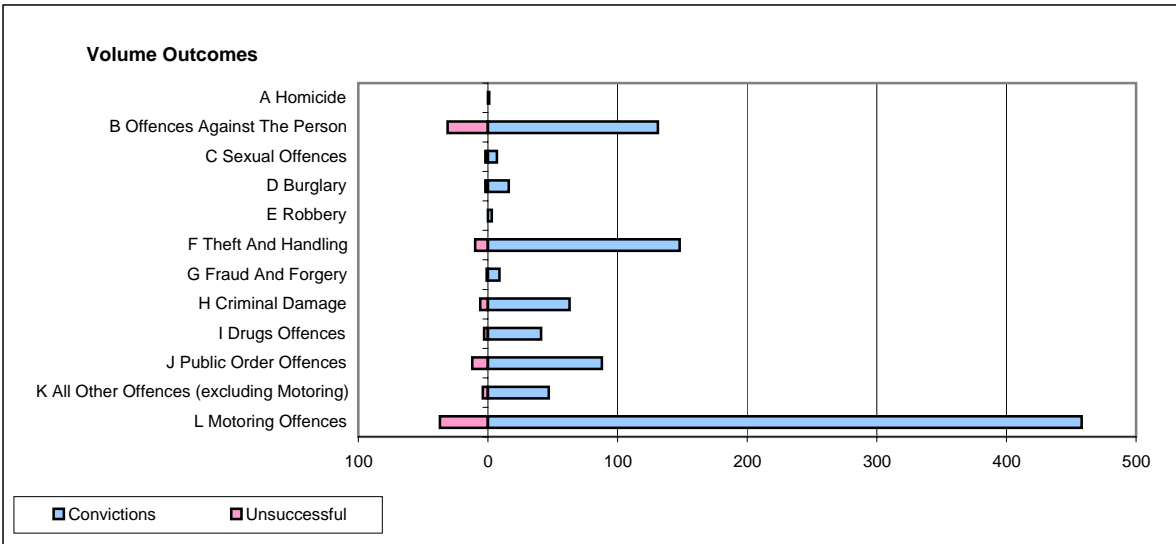
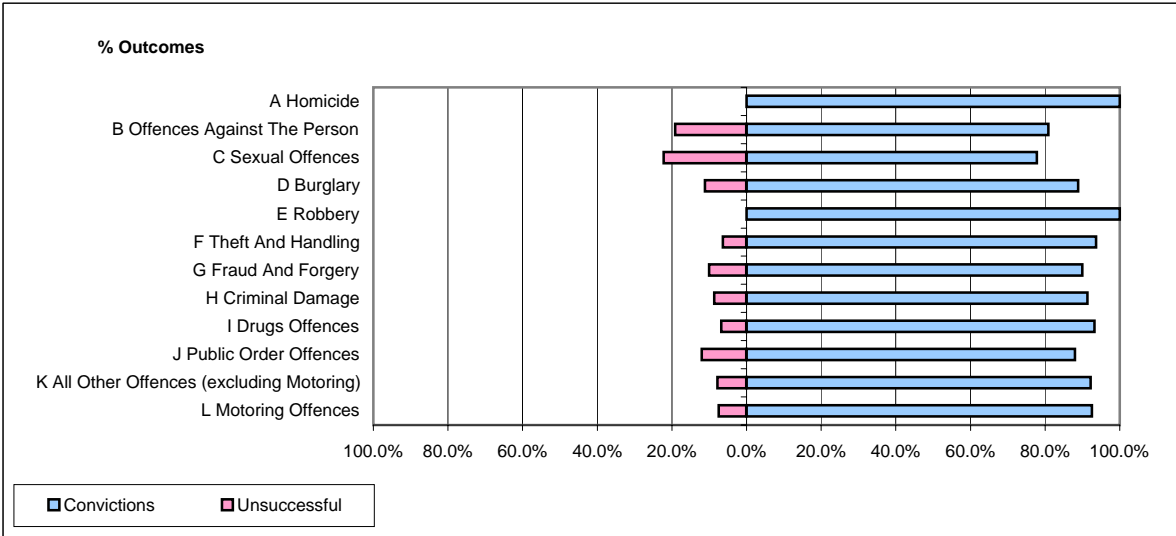


CPS OUTCOMES BY PRINCIPAL OFFENCE CATEGORY

March 2008

P26-Norfolk



	Convictions		Unsuccessful	
	Number of Defendants	%	Number of Defendants	%
A Homicide	1	100.0%	0	0.0%
B Offences Against The Person	131	80.9%	31	19.1%
C Sexual Offences	7	77.8%	2	22.2%
D Burglary	16	88.9%	2	11.1%
E Robbery	3	100.0%	0	0.0%
F Theft And Handling	148	93.7%	10	6.3%
G Fraud And Forgery	9	90.0%	1	10.0%
H Criminal Damage	63	91.3%	6	8.7%
I Drugs Offences	41	93.2%	3	6.8%
J Public Order Offences	88	88.0%	12	12.0%
K All Other Offences (excluding Motoring)	47	92.2%	4	7.8%
L Motoring Offences	458	92.5%	37	7.5%
Admin Finalisations	0	0.0%	14	100.0%
TOTAL	1,012	89.2%	122	10.8%