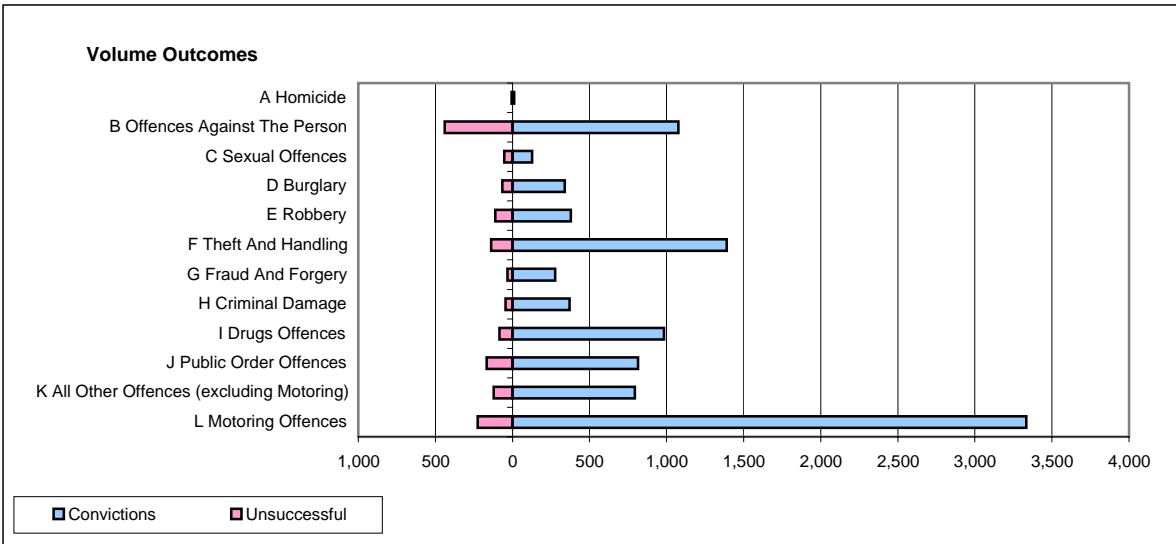
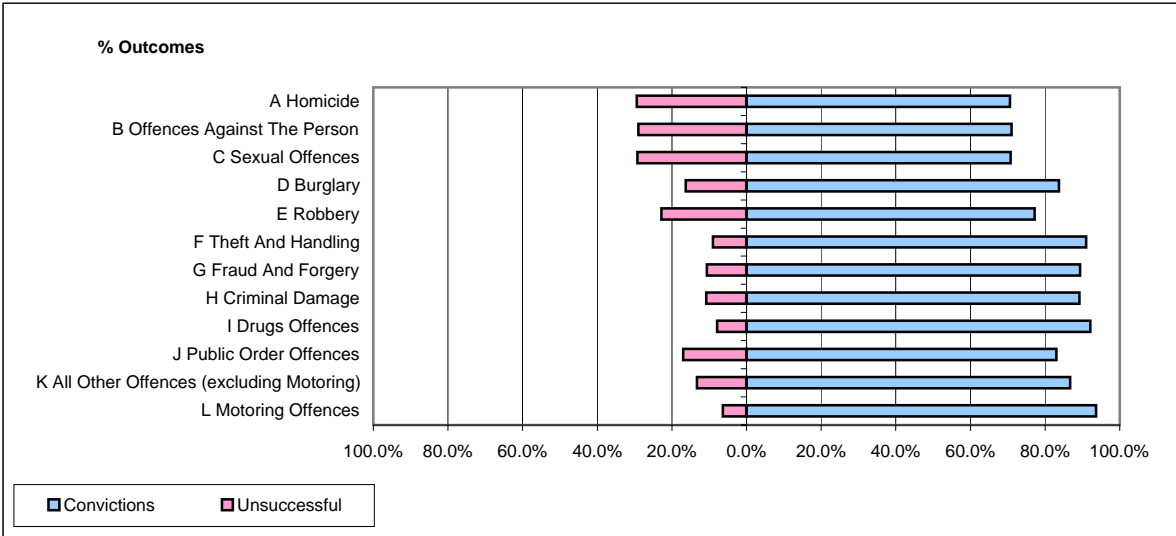


**CPS OUTCOMES BY PRINCIPAL OFFENCE CATEGORY**

**March 2008**

**P25-Metropolitan&City**



	Convictions		Unsuccessful	
	Number of Defendants	%	Number of Defendants	%
<b>A Homicide</b>	12	70.6%	5	29.4%
<b>B Offences Against The Person</b>	1,076	71.0%	439	29.0%
<b>C Sexual Offences</b>	128	70.7%	53	29.3%
<b>D Burglary</b>	340	83.7%	66	16.3%
<b>E Robbery</b>	379	77.2%	112	22.8%
<b>F Theft And Handling</b>	1,389	91.0%	138	9.0%
<b>G Fraud And Forgery</b>	278	89.4%	33	10.6%
<b>H Criminal Damage</b>	370	89.2%	45	10.8%
<b>I Drugs Offences</b>	982	92.1%	84	7.9%
<b>J Public Order Offences</b>	814	83.0%	167	17.0%
<b>K All Other Offences (excluding Motoring)</b>	795	86.7%	122	13.3%
<b>L Motoring Offences</b>	3,334	93.7%	226	6.3%
<b>Admin Finalisations</b>	0	0.0%	370	100.0%
<b>TOTAL</b>	<b>9,897</b>	<b>84.2%</b>	<b>1,860</b>	<b>15.8%</b>