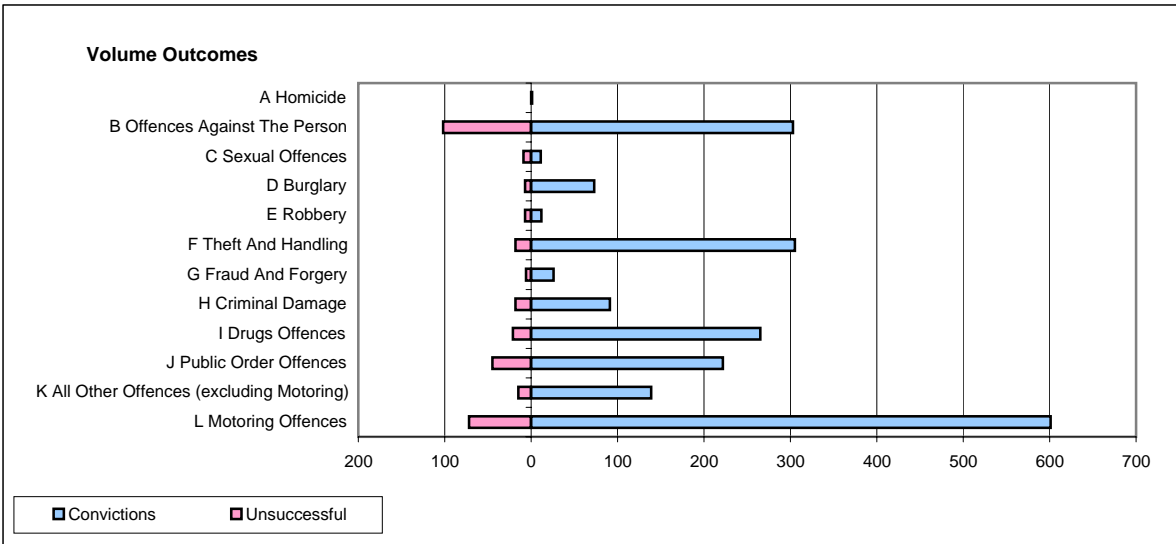
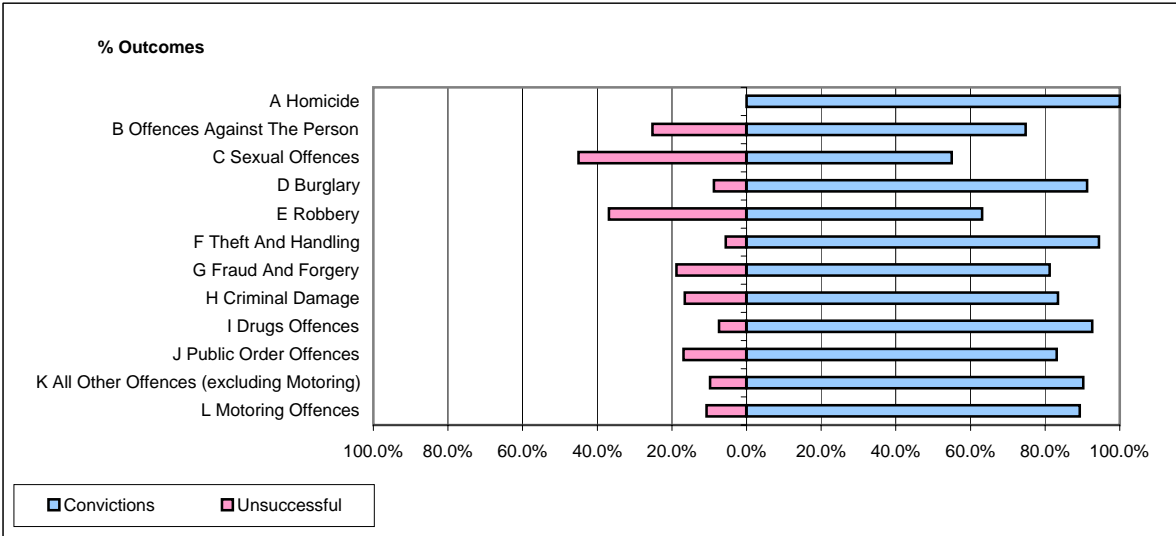


CPS OUTCOMES BY PRINCIPAL OFFENCE CATEGORY

March 2008

P24-Merseyside



	Convictions		Unsuccessful	
	Number of Defendants	%	Number of Defendants	%
A Homicide	1	100.0%	0	0.0%
B Offences Against The Person	303	74.8%	102	25.2%
C Sexual Offences	11	55.0%	9	45.0%
D Burglary	73	91.3%	7	8.8%
E Robbery	12	63.2%	7	36.8%
F Theft And Handling	305	94.4%	18	5.6%
G Fraud And Forgery	26	81.3%	6	18.8%
H Criminal Damage	91	83.5%	18	16.5%
I Drugs Offences	265	92.7%	21	7.3%
J Public Order Offences	222	83.1%	45	16.9%
K All Other Offences (excluding Motoring)	139	90.3%	15	9.7%
L Motoring Offences	601	89.3%	72	10.7%
Admin Finalisations	0	0.0%	38	100.0%
TOTAL	2,049	85.1%	358	14.9%