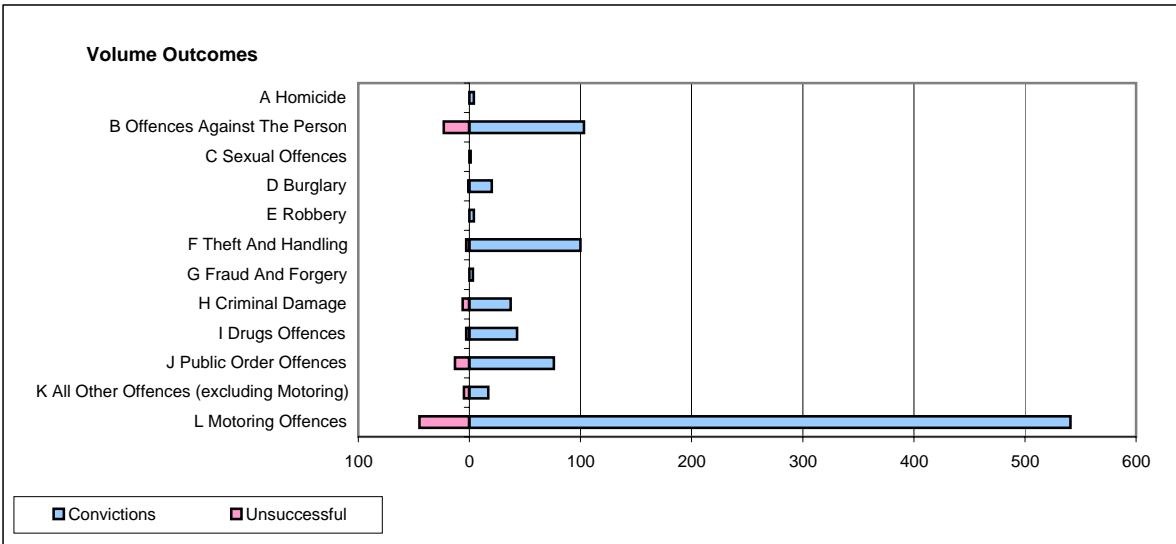
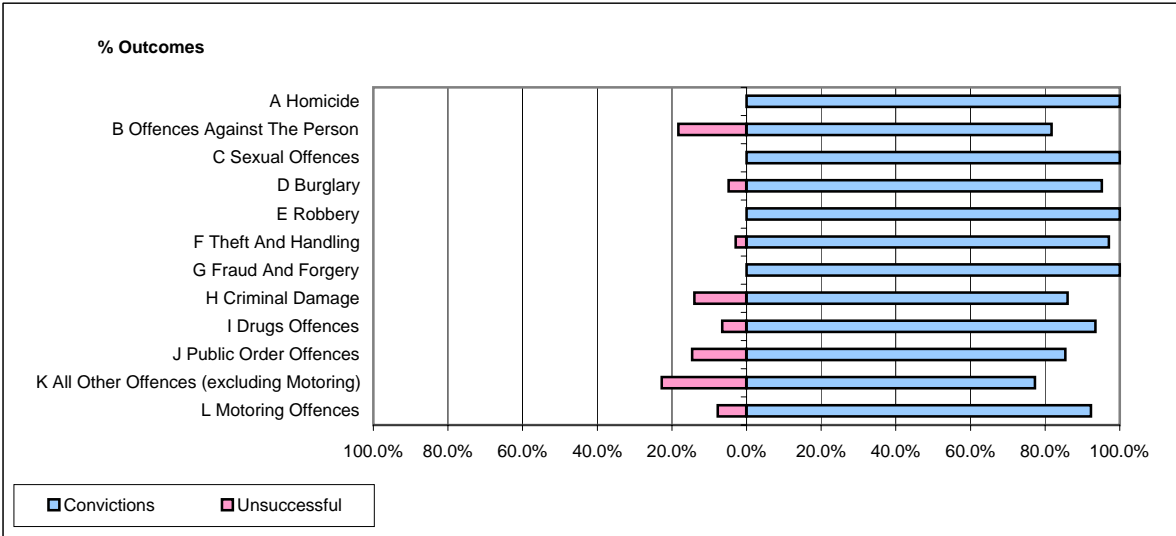


CPS OUTCOMES BY PRINCIPAL OFFENCE CATEGORY

March 2008

P23-Lincolnshire



	Convictions		Unsuccessful	
	Number of Defendants	%	Number of Defendants	%
A Homicide	4	100.0%	0	0.0%
B Offences Against The Person	103	81.7%	23	18.3%
C Sexual Offences	1	100.0%	0	0.0%
D Burglary	20	95.2%	1	4.8%
E Robbery	4	100.0%	0	0.0%
F Theft And Handling	100	97.1%	3	2.9%
G Fraud And Forgery	3	100.0%	0	0.0%
H Criminal Damage	37	86.0%	6	14.0%
I Drugs Offences	43	93.5%	3	6.5%
J Public Order Offences	76	85.4%	13	14.6%
K All Other Offences (excluding Motoring)	17	77.3%	5	22.7%
L Motoring Offences	541	92.3%	45	7.7%
Admin Finalisations	0	0.0%	8	100.0%
TOTAL	949	89.9%	107	10.1%