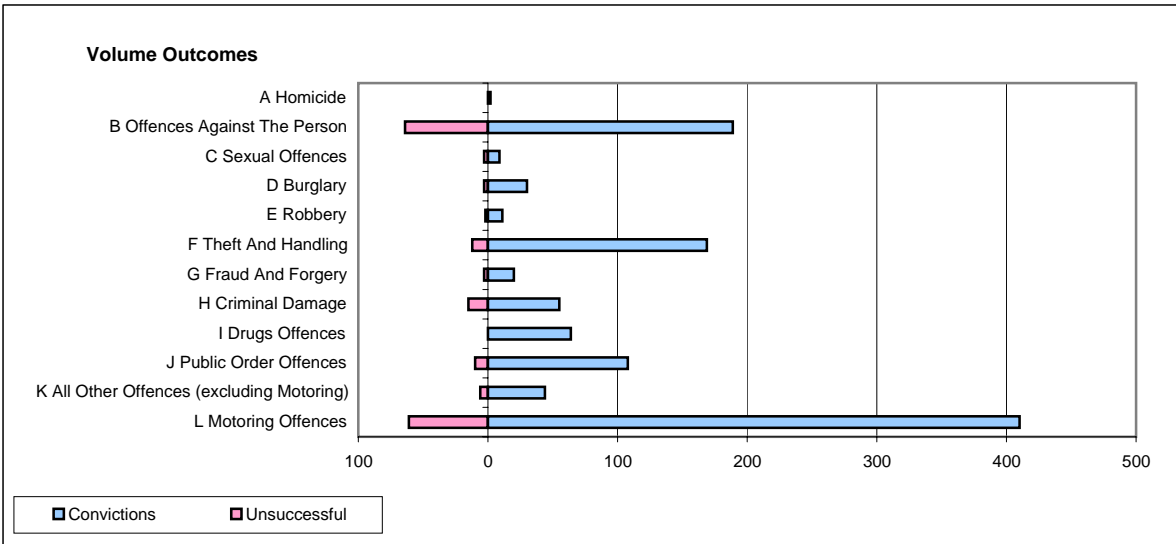
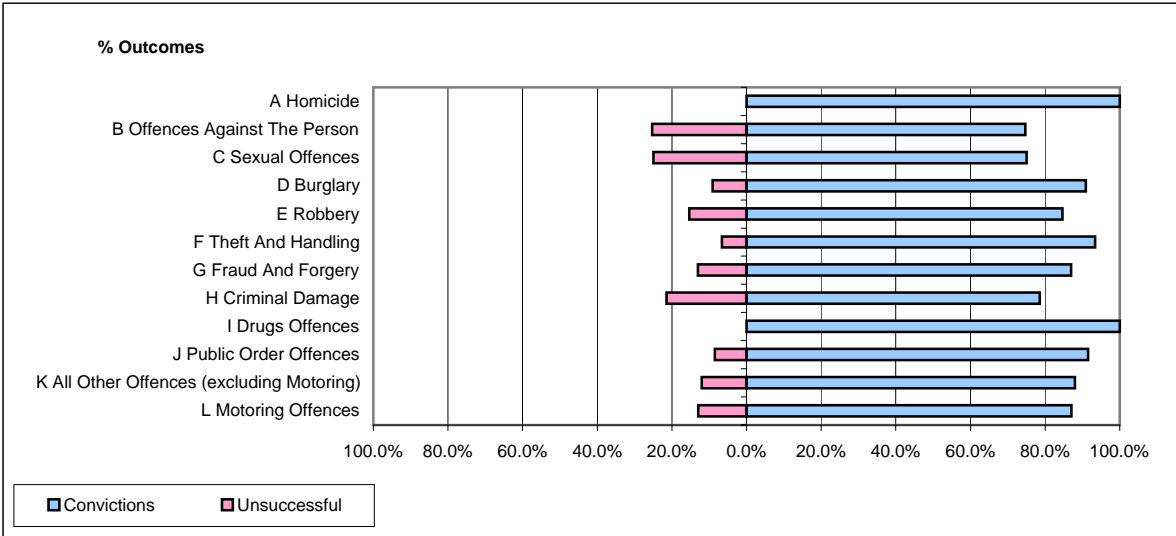


CPS OUTCOMES BY PRINCIPAL OFFENCE CATEGORY

March 2008

P22-Leicestershire



	Convictions		Unsuccessful	
	Number of Defendants	%	Number of Defendants	%
A Homicide	2	100.0%	0	0.0%
B Offences Against The Person	189	74.7%	64	25.3%
C Sexual Offences	9	75.0%	3	25.0%
D Burglary	30	90.9%	3	9.1%
E Robbery	11	84.6%	2	15.4%
F Theft And Handling	169	93.4%	12	6.6%
G Fraud And Forgery	20	87.0%	3	13.0%
H Criminal Damage	55	78.6%	15	21.4%
I Drugs Offences	64	100.0%	0	0.0%
J Public Order Offences	108	91.5%	10	8.5%
K All Other Offences (excluding Motoring)	44	88.0%	6	12.0%
L Motoring Offences	410	87.0%	61	13.0%
Admin Finalisations	0	0.0%	21	100.0%
TOTAL	1,111	84.7%	200	15.3%