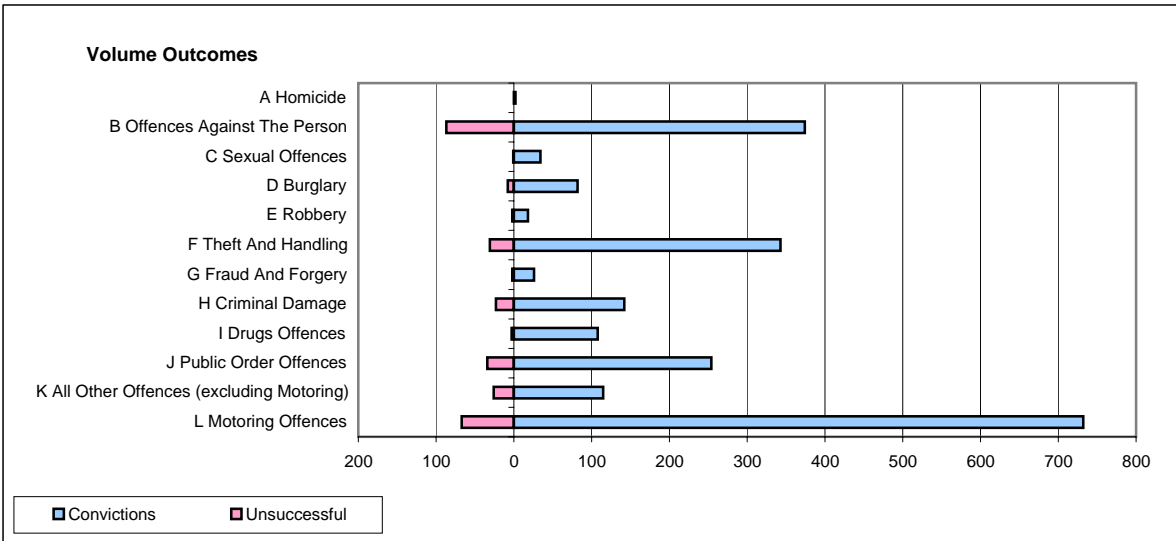
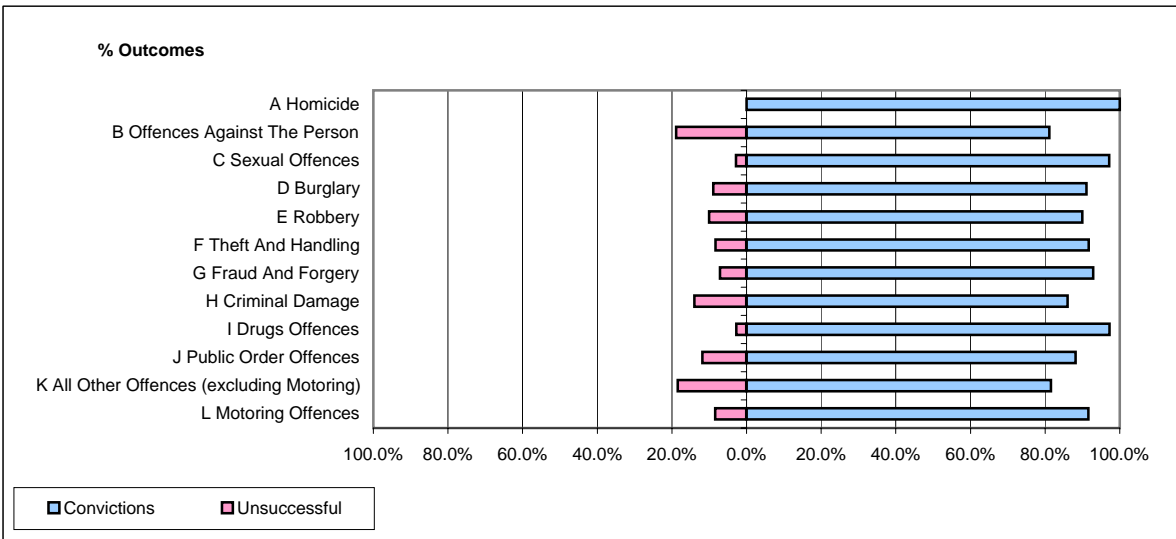


CPS OUTCOMES BY PRINCIPAL OFFENCE CATEGORY

March 2008

P21-Lancashire



	Convictions		Unsuccessful	
	Number of Defendants	%	Number of Defendants	%
A Homicide	2	100.0%	0	0.0%
B Offences Against The Person	374	81.1%	87	18.9%
C Sexual Offences	34	97.1%	1	2.9%
D Burglary	82	91.1%	8	8.9%
E Robbery	18	90.0%	2	10.0%
F Theft And Handling	343	91.7%	31	8.3%
G Fraud And Forgery	26	92.9%	2	7.1%
H Criminal Damage	142	86.1%	23	13.9%
I Drugs Offences	108	97.3%	3	2.7%
J Public Order Offences	254	88.2%	34	11.8%
K All Other Offences (excluding Motoring)	115	81.6%	26	18.4%
L Motoring Offences	732	91.6%	67	8.4%
Admin Finalisations	0	0.0%	30	100.0%
TOTAL	2,230	87.7%	314	12.3%