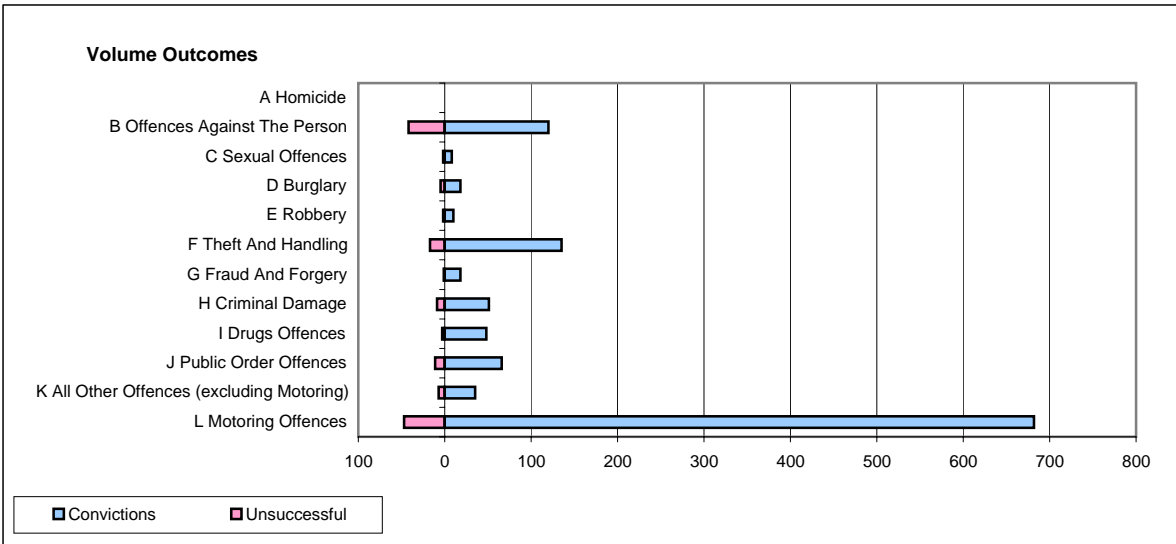
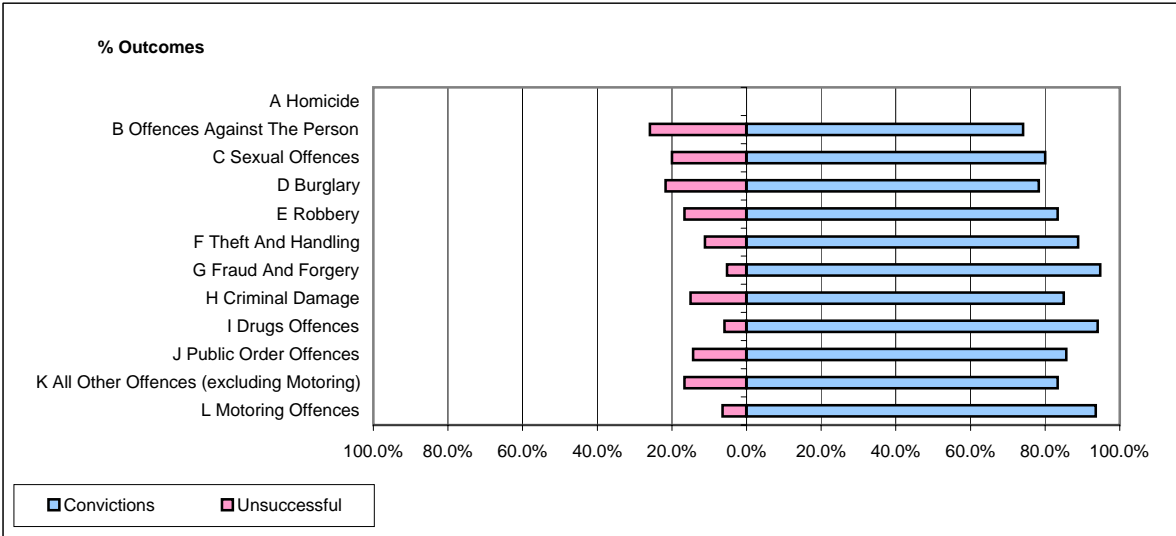


CPS OUTCOMES BY PRINCIPAL OFFENCE CATEGORY

March 2008

P18-Hertfordshire



	Convictions		Unsuccessful	
	Number of Defendants	%	Number of Defendants	%
A Homicide	0	0	0	0
B Offences Against The Person	120	74.1%	42	25.9%
C Sexual Offences	8	80.0%	2	20.0%
D Burglary	18	78.3%	5	21.7%
E Robbery	10	83.3%	2	16.7%
F Theft And Handling	135	88.8%	17	11.2%
G Fraud And Forgery	18	94.7%	1	5.3%
H Criminal Damage	51	85.0%	9	15.0%
I Drugs Offences	48	94.1%	3	5.9%
J Public Order Offences	66	85.7%	11	14.3%
K All Other Offences (excluding Motoring)	35	83.3%	7	16.7%
L Motoring Offences	682	93.6%	47	6.4%
Admin Finalisations	0	0.0%	14	100.0%
TOTAL	1,191	88.2%	160	11.8%