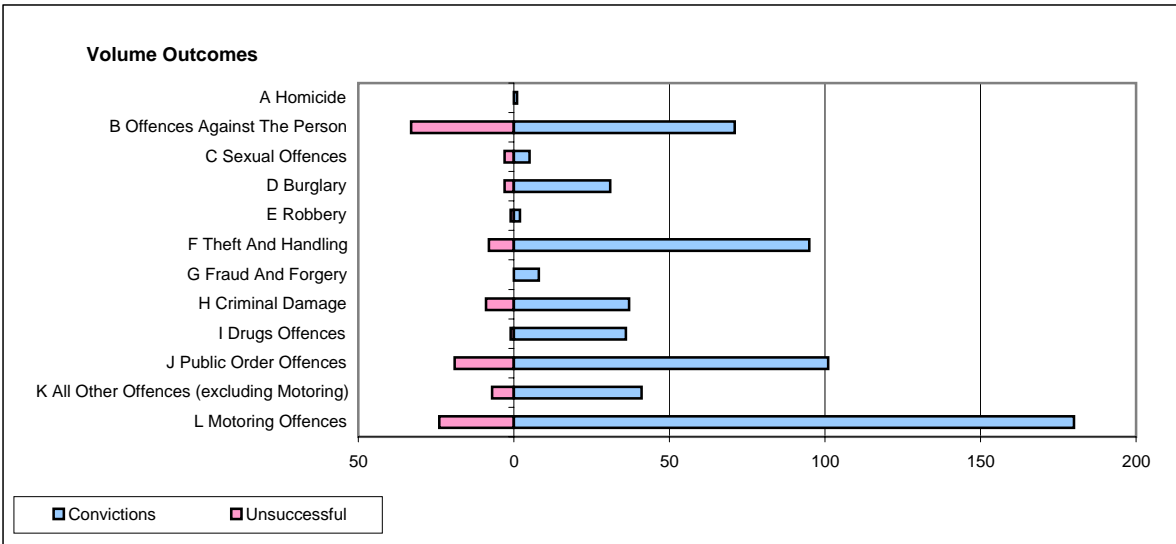
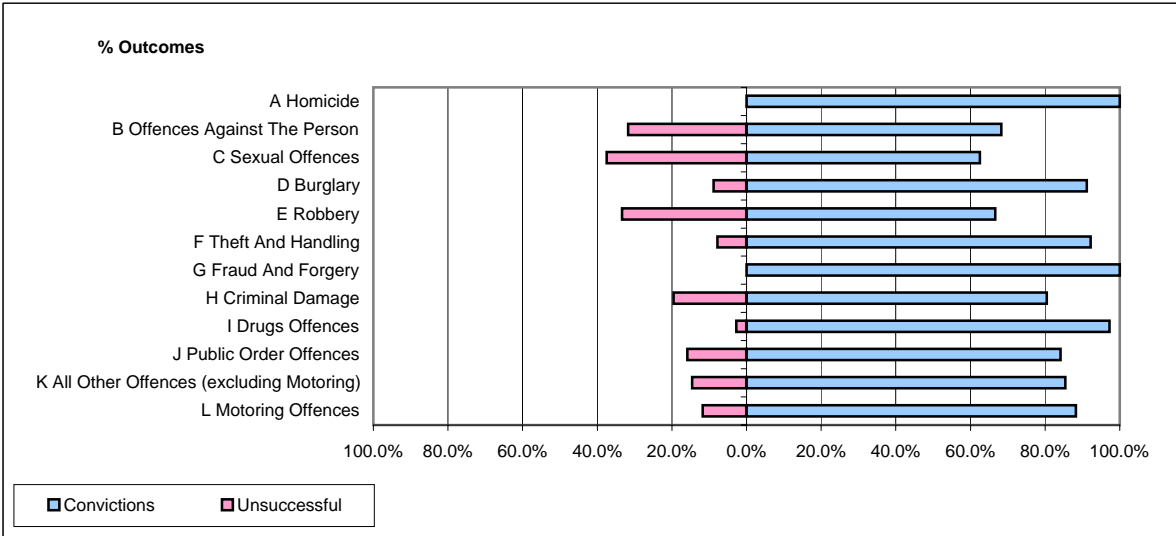


CPS OUTCOMES BY PRINCIPAL OFFENCE CATEGORY

March 2008

P16-Gwent



	Convictions		Unsuccessful	
	Number of Defendants	%	Number of Defendants	%
A Homicide	1	100.0%	0	0.0%
B Offences Against The Person	71	68.3%	33	31.7%
C Sexual Offences	5	62.5%	3	37.5%
D Burglary	31	91.2%	3	8.8%
E Robbery	2	66.7%	1	33.3%
F Theft And Handling	95	92.2%	8	7.8%
G Fraud And Forgery	8	100.0%	0	0.0%
H Criminal Damage	37	80.4%	9	19.6%
I Drugs Offences	36	97.3%	1	2.7%
J Public Order Offences	101	84.2%	19	15.8%
K All Other Offences (excluding Motoring)	41	85.4%	7	14.6%
L Motoring Offences	180	88.2%	24	11.8%
Admin Finalisations	0	0.0%	15	100.0%
TOTAL	608	83.2%	123	16.8%