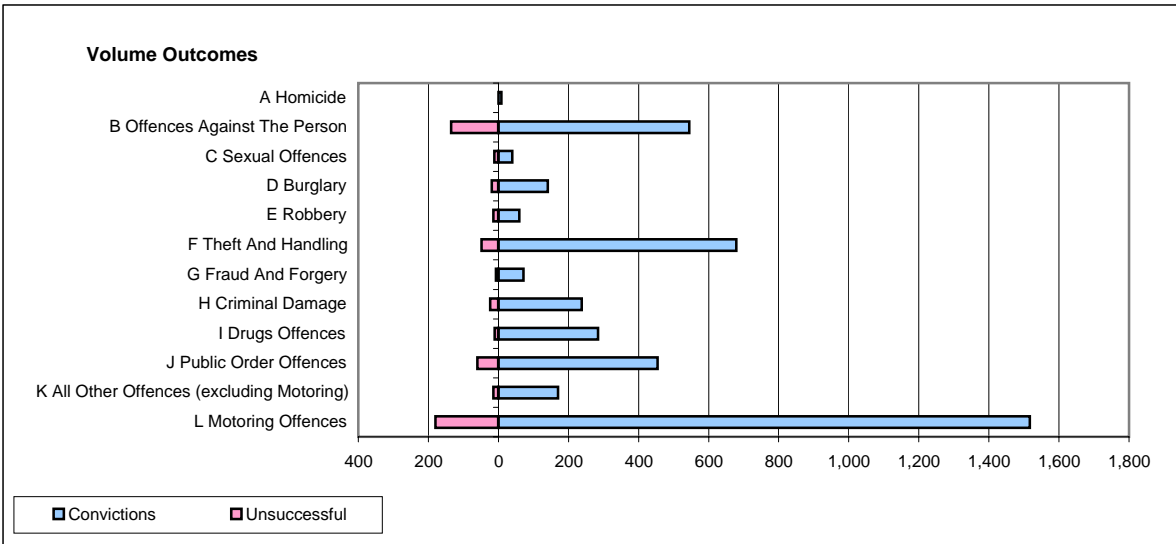
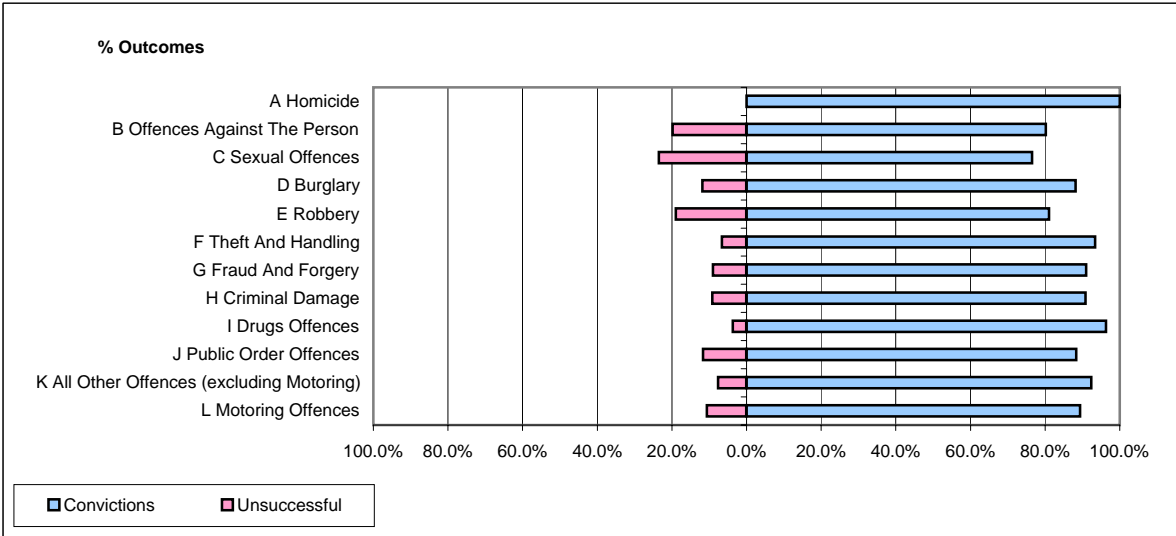


CPS OUTCOMES BY PRINCIPAL OFFENCE CATEGORY

March 2008

P15-GreaterManchester



	Convictions		Unsuccessful	
	Number of Defendants	%	Number of Defendants	%
A Homicide	8	100.0%	0	0.0%
B Offences Against The Person	545	80.1%	135	19.9%
C Sexual Offences	39	76.5%	12	23.5%
D Burglary	141	88.1%	19	11.9%
E Robbery	60	81.1%	14	18.9%
F Theft And Handling	679	93.4%	48	6.6%
G Fraud And Forgery	71	91.0%	7	9.0%
H Criminal Damage	238	90.8%	24	9.2%
I Drugs Offences	284	96.3%	11	3.7%
J Public Order Offences	454	88.3%	60	11.7%
K All Other Offences (excluding Motoring)	170	92.4%	14	7.6%
L Motoring Offences	1,517	89.4%	180	10.6%
Admin Finalisations	0	0.0%	70	100.0%
TOTAL	4,206	87.6%	594	12.4%