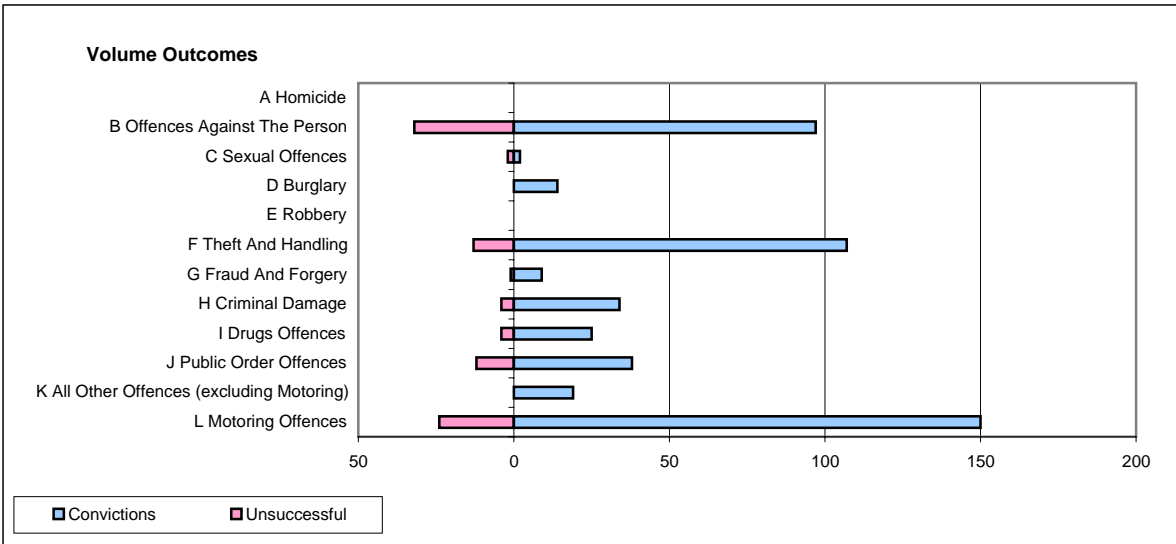
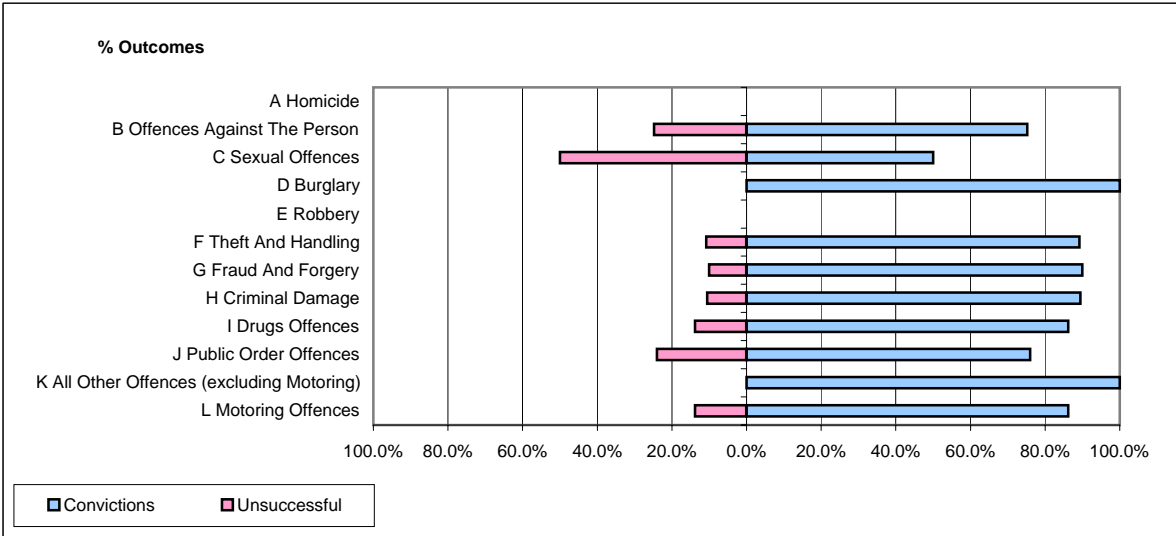


CPS OUTCOMES BY PRINCIPAL OFFENCE CATEGORY

March 2008

P14-Gloucestershire



	Convictions		Unsuccessful	
	Number of Defendants	%	Number of Defendants	%
A Homicide	0	0	0	0
B Offences Against The Person	97	75.2%	32	24.8%
C Sexual Offences	2	50.0%	2	50.0%
D Burglary	14	100.0%	0	0.0%
E Robbery	0	0	0	0
F Theft And Handling	107	89.2%	13	10.8%
G Fraud And Forgery	9	90.0%	1	10.0%
H Criminal Damage	34	89.5%	4	10.5%
I Drugs Offences	25	86.2%	4	13.8%
J Public Order Offences	38	76.0%	12	24.0%
K All Other Offences (excluding Motoring)	19	100.0%	0	0.0%
L Motoring Offences	150	86.2%	24	13.8%
Admin Finalisations	0	0.0%	5	100.0%
TOTAL	495	83.6%	97	16.4%