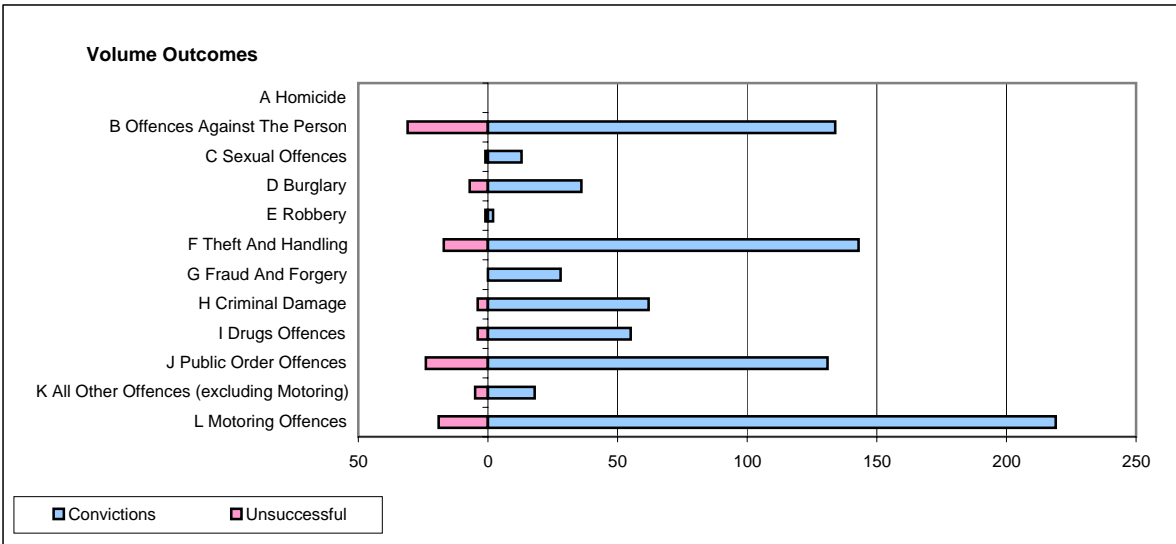
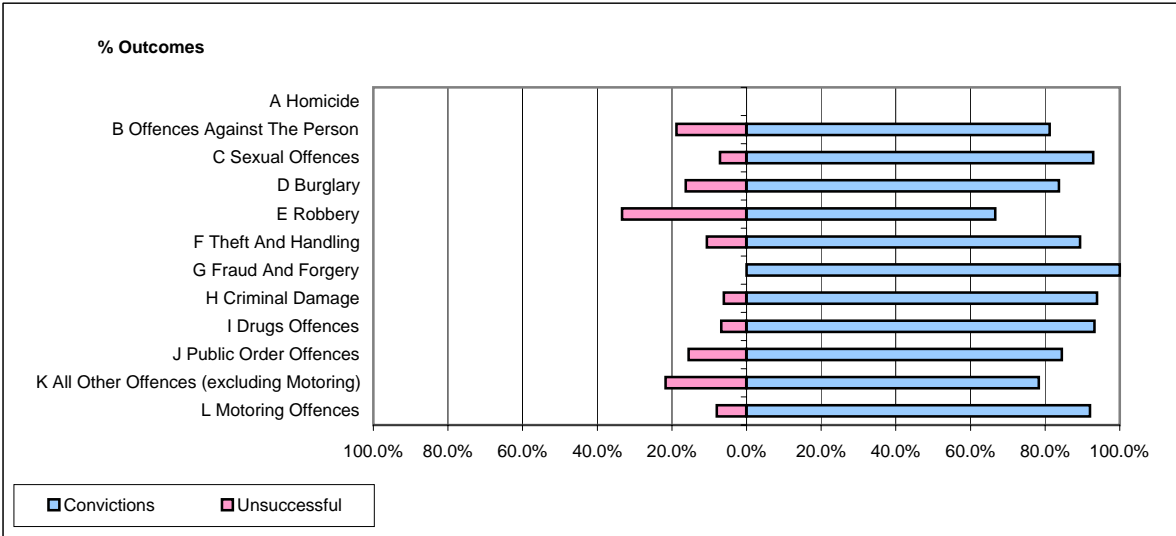


CPS OUTCOMES BY PRINCIPAL OFFENCE CATEGORY

March 2008

P11-Durham



	Convictions		Unsuccessful	
	Number of Defendants	%	Number of Defendants	%
A Homicide	0	0	0	0
B Offences Against The Person	134	81.2%	31	18.8%
C Sexual Offences	13	92.9%	1	7.1%
D Burglary	36	83.7%	7	16.3%
E Robbery	2	66.7%	1	33.3%
F Theft And Handling	143	89.4%	17	10.6%
G Fraud And Forgery	28	100.0%	0	0.0%
H Criminal Damage	62	93.9%	4	6.1%
I Drugs Offences	55	93.2%	4	6.8%
J Public Order Offences	131	84.5%	24	15.5%
K All Other Offences (excluding Motoring)	18	78.3%	5	21.7%
L Motoring Offences	219	92.0%	19	8.0%
Admin Finalisations	0	0.0%	5	100.0%
TOTAL	841	87.7%	118	12.3%