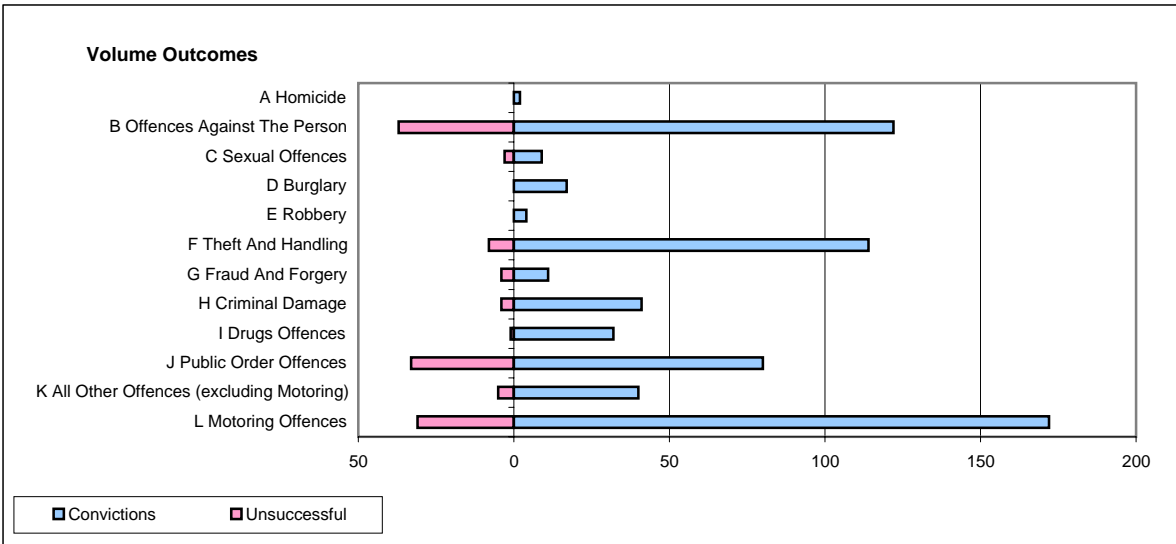
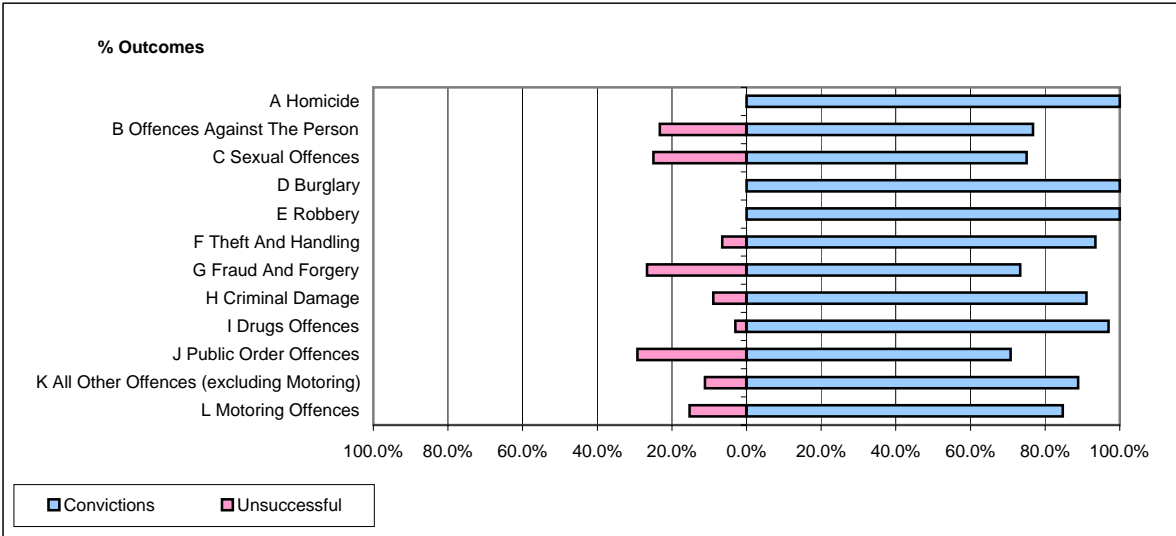


**CPS OUTCOMES BY PRINCIPAL OFFENCE CATEGORY**

**March 2008**

**P10-Dorset**



	Convictions		Unsuccessful	
	Number of Defendants	%	Number of Defendants	%
<b>A Homicide</b>	<b>2</b>	<b>100.0%</b>	<b>0</b>	<b>0.0%</b>
<b>B Offences Against The Person</b>	<b>122</b>	<b>76.7%</b>	<b>37</b>	<b>23.3%</b>
<b>C Sexual Offences</b>	<b>9</b>	<b>75.0%</b>	<b>3</b>	<b>25.0%</b>
<b>D Burglary</b>	<b>17</b>	<b>100.0%</b>	<b>0</b>	<b>0.0%</b>
<b>E Robbery</b>	<b>4</b>	<b>100.0%</b>	<b>0</b>	<b>0.0%</b>
<b>F Theft And Handling</b>	<b>114</b>	<b>93.4%</b>	<b>8</b>	<b>6.6%</b>
<b>G Fraud And Forgery</b>	<b>11</b>	<b>73.3%</b>	<b>4</b>	<b>26.7%</b>
<b>H Criminal Damage</b>	<b>41</b>	<b>91.1%</b>	<b>4</b>	<b>8.9%</b>
<b>I Drugs Offences</b>	<b>32</b>	<b>97.0%</b>	<b>1</b>	<b>3.0%</b>
<b>J Public Order Offences</b>	<b>80</b>	<b>70.8%</b>	<b>33</b>	<b>29.2%</b>
<b>K All Other Offences (excluding Motoring)</b>	<b>40</b>	<b>88.9%</b>	<b>5</b>	<b>11.1%</b>
<b>L Motoring Offences</b>	<b>172</b>	<b>84.7%</b>	<b>31</b>	<b>15.3%</b>
<b>Admin Finalisations</b>	<b>0</b>	<b>0.0%</b>	<b>10</b>	<b>100.0%</b>
<b>TOTAL</b>	<b>644</b>	<b>82.6%</b>	<b>136</b>	<b>17.4%</b>