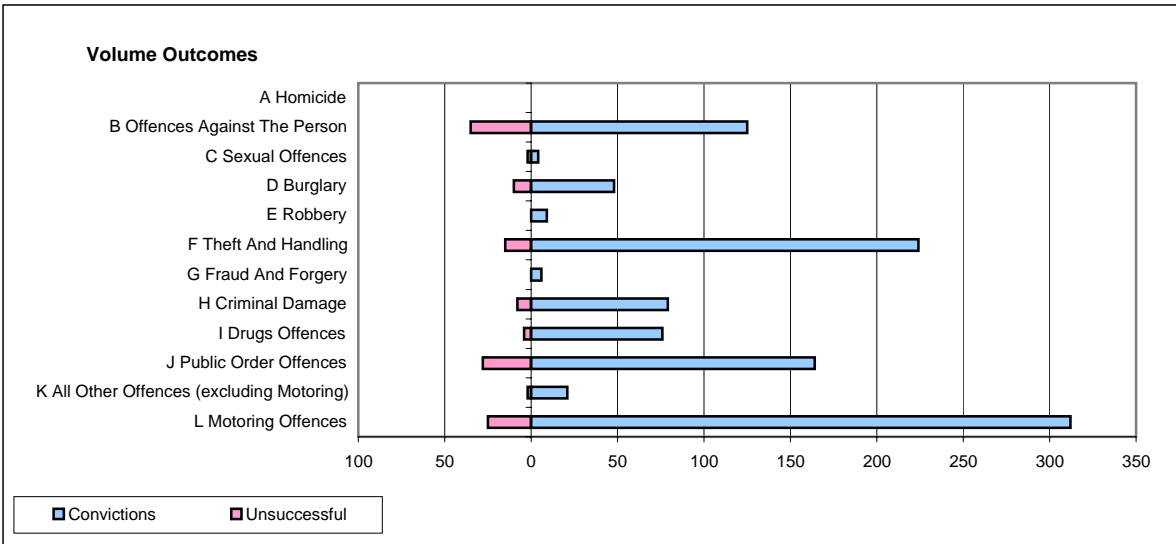
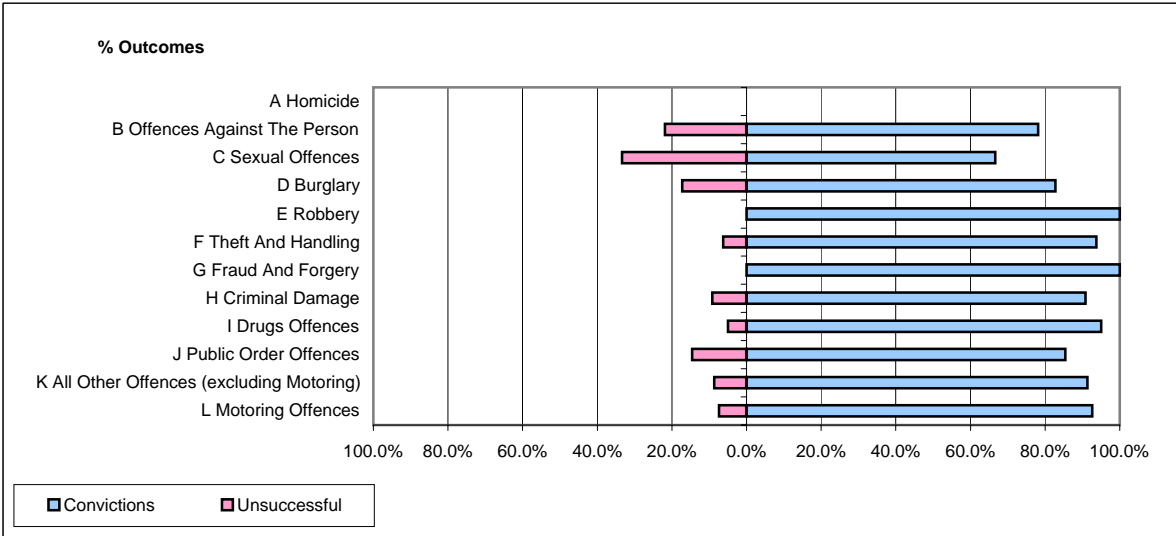


CPS OUTCOMES BY PRINCIPAL OFFENCE CATEGORY

March 2008

P06-Cleveland



	Convictions		Unsuccessful	
	Number of Defendants	%	Number of Defendants	%
A Homicide	0	0	0	0
B Offences Against The Person	125	78.1%	35	21.9%
C Sexual Offences	4	66.7%	2	33.3%
D Burglary	48	82.8%	10	17.2%
E Robbery	9	100.0%	0	0.0%
F Theft And Handling	224	93.7%	15	6.3%
G Fraud And Forgery	6	100.0%	0	0.0%
H Criminal Damage	79	90.8%	8	9.2%
I Drugs Offences	76	95.0%	4	5.0%
J Public Order Offences	164	85.4%	28	14.6%
K All Other Offences (excluding Motoring)	21	91.3%	2	8.7%
L Motoring Offences	312	92.6%	25	7.4%
Admin Finalisations	0	0.0%	15	100.0%
TOTAL	1,068	88.1%	144	11.9%