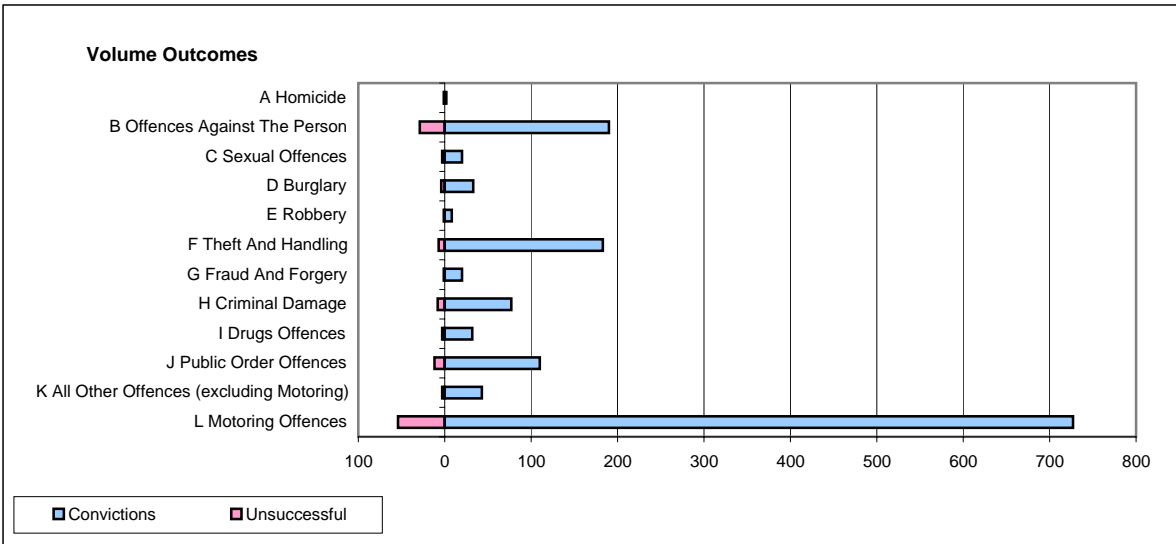
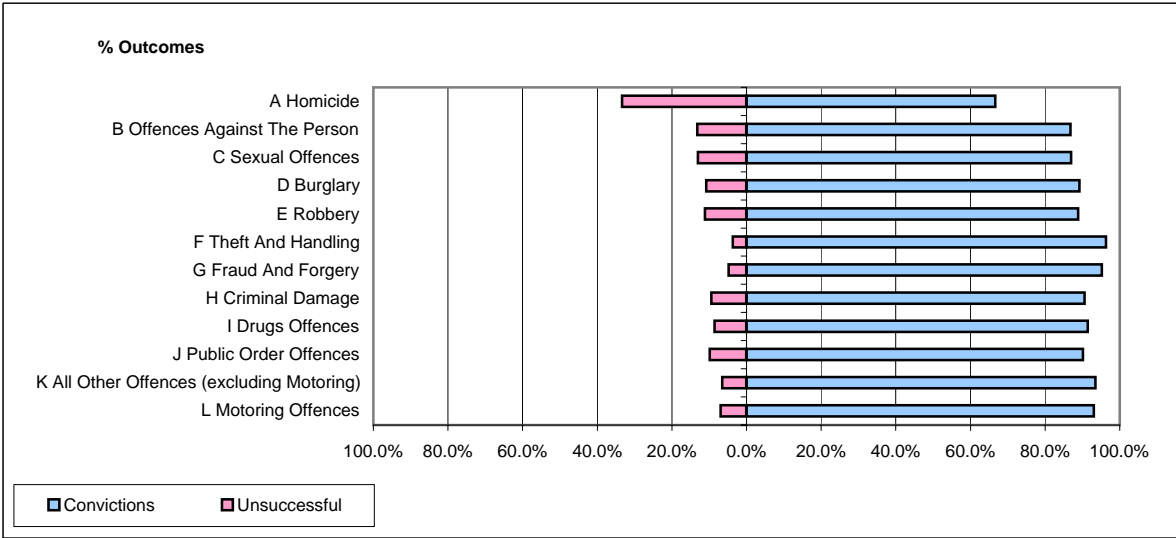


**CPS OUTCOMES BY PRINCIPAL OFFENCE CATEGORY**

**March 2008**

**P04-Cheshire**



	Convictions		Unsuccessful	
	Number of Defendants	%	Number of Defendants	%
<b>A Homicide</b>	<b>2</b>	<b>66.7%</b>	<b>1</b>	<b>33.3%</b>
<b>B Offences Against The Person</b>	<b>190</b>	<b>86.8%</b>	<b>29</b>	<b>13.2%</b>
<b>C Sexual Offences</b>	<b>20</b>	<b>87.0%</b>	<b>3</b>	<b>13.0%</b>
<b>D Burglary</b>	<b>33</b>	<b>89.2%</b>	<b>4</b>	<b>10.8%</b>
<b>E Robbery</b>	<b>8</b>	<b>88.9%</b>	<b>1</b>	<b>11.1%</b>
<b>F Theft And Handling</b>	<b>183</b>	<b>96.3%</b>	<b>7</b>	<b>3.7%</b>
<b>G Fraud And Forgery</b>	<b>20</b>	<b>95.2%</b>	<b>1</b>	<b>4.8%</b>
<b>H Criminal Damage</b>	<b>77</b>	<b>90.6%</b>	<b>8</b>	<b>9.4%</b>
<b>I Drugs Offences</b>	<b>32</b>	<b>91.4%</b>	<b>3</b>	<b>8.6%</b>
<b>J Public Order Offences</b>	<b>110</b>	<b>90.2%</b>	<b>12</b>	<b>9.8%</b>
<b>K All Other Offences (excluding Motoring)</b>	<b>43</b>	<b>93.5%</b>	<b>3</b>	<b>6.5%</b>
<b>L Motoring Offences</b>	<b>727</b>	<b>93.1%</b>	<b>54</b>	<b>6.9%</b>
<b>Admin Finalisations</b>	<b>0</b>	<b>0.0%</b>	<b>15</b>	<b>100.0%</b>
<b>TOTAL</b>	<b>1,445</b>	<b>91.1%</b>	<b>141</b>	<b>8.9%</b>