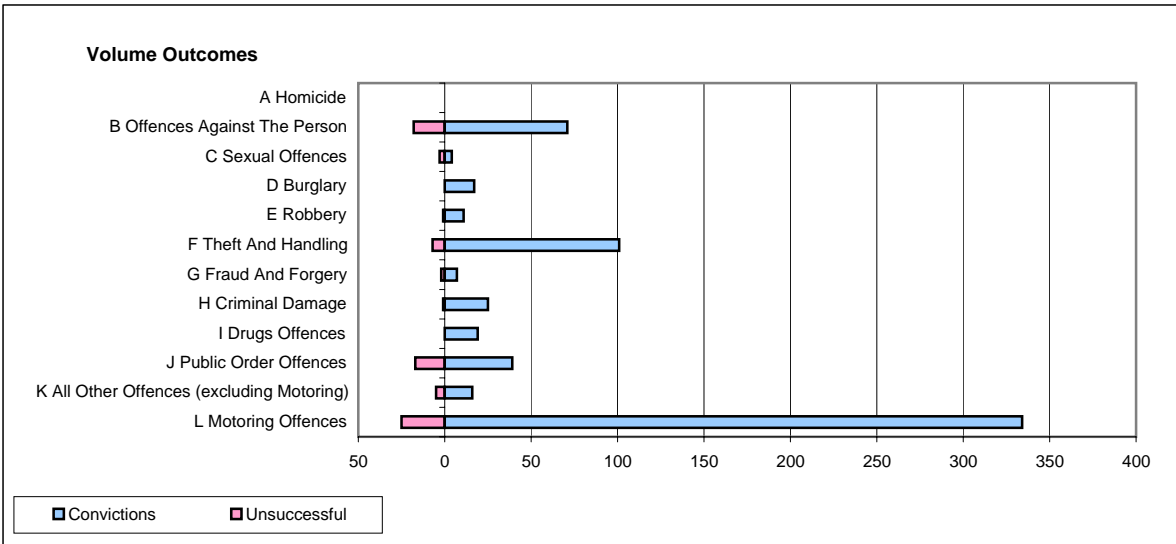
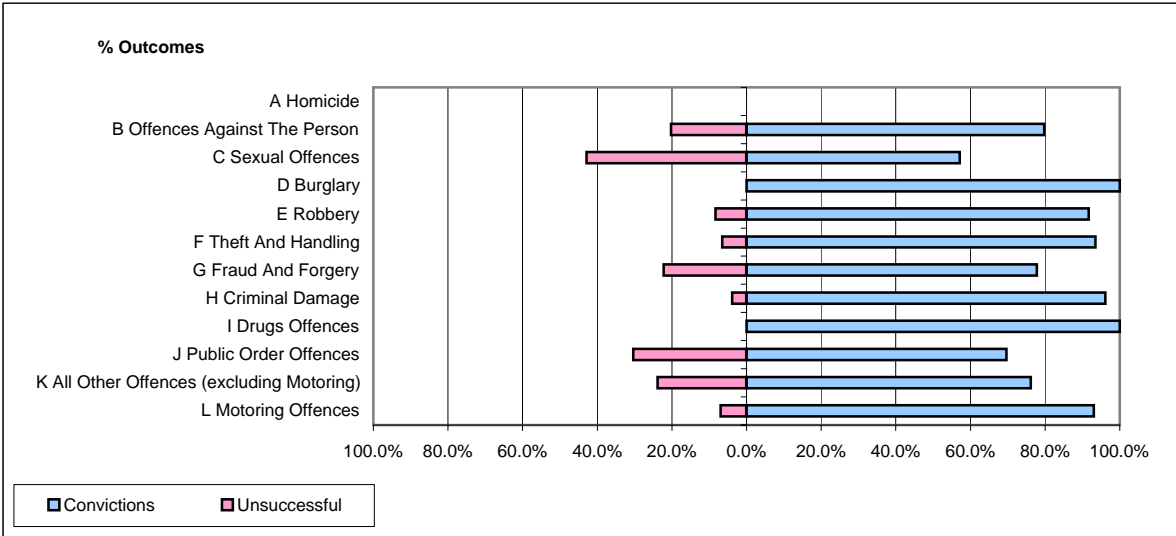


CPS OUTCOMES BY PRINCIPAL OFFENCE CATEGORY

March 2008

P02-Bedfordshire



	Convictions		Unsuccessful	
	Number of Defendants	%	Number of Defendants	%
A Homicide	0	0	0	0
B Offences Against The Person	71	79.8%	18	20.2%
C Sexual Offences	4	57.1%	3	42.9%
D Burglary	17	100.0%	0	0.0%
E Robbery	11	91.7%	1	8.3%
F Theft And Handling	101	93.5%	7	6.5%
G Fraud And Forgery	7	77.8%	2	22.2%
H Criminal Damage	25	96.2%	1	3.8%
I Drugs Offences	19	100.0%	0	0.0%
J Public Order Offences	39	69.6%	17	30.4%
K All Other Offences (excluding Motoring)	16	76.2%	5	23.8%
L Motoring Offences	334	93.0%	25	7.0%
Admin Finalisations	0	0.0%	7	100.0%
TOTAL	644	88.2%	86	11.8%