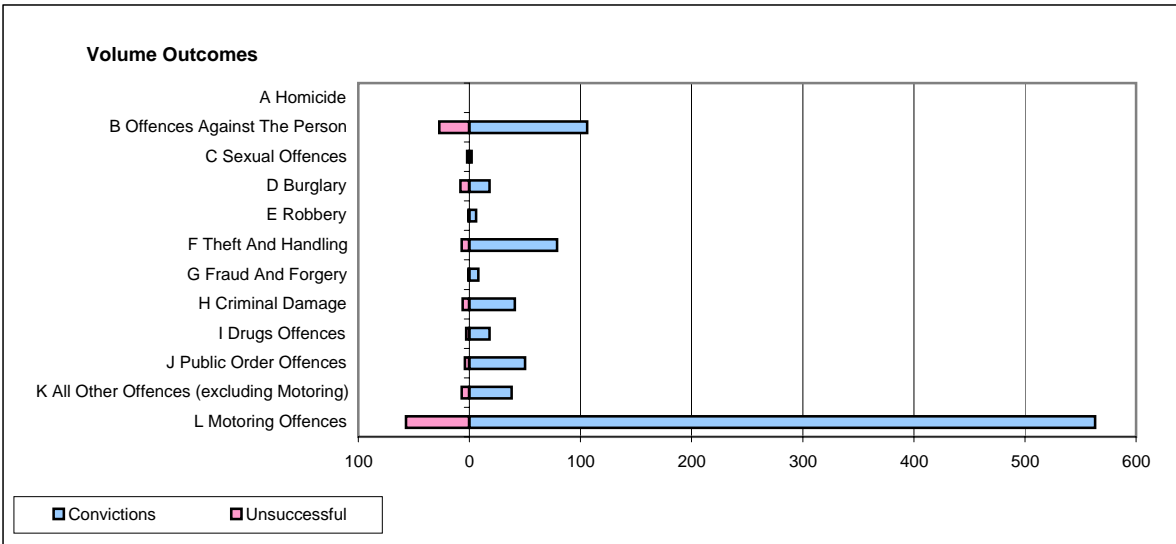
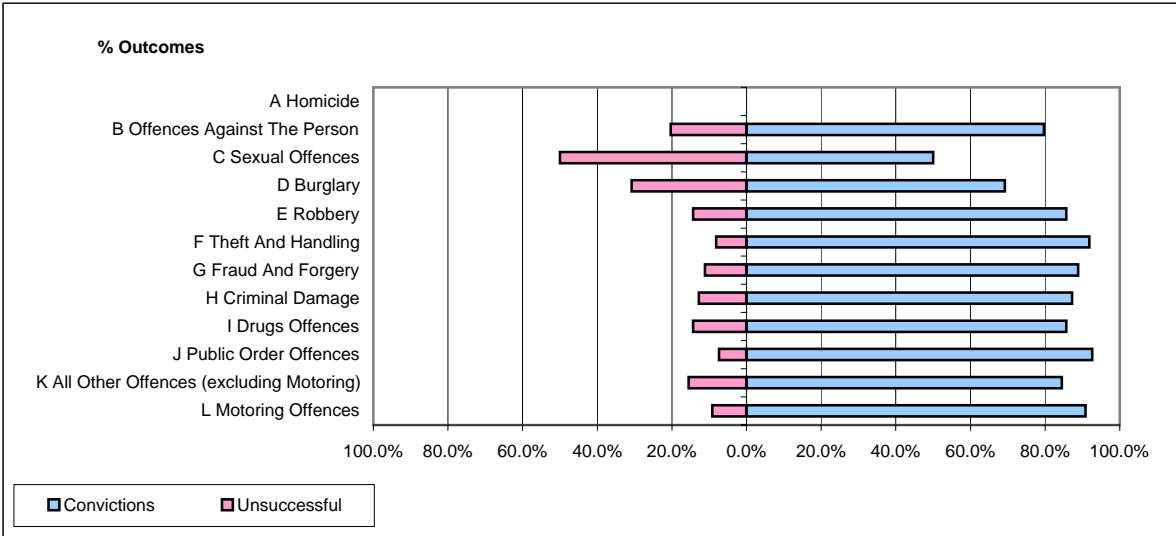


CPS OUTCOMES BY PRINCIPAL OFFENCE CATEGORY

February 2008

P43-Wiltshire



	Convictions		Unsuccessful	
	Number of Defendants	%	Number of Defendants	%
A Homicide	0	0	0	0
B Offences Against The Person	106	79.7%	27	20.3%
C Sexual Offences	2	50.0%	2	50.0%
D Burglary	18	69.2%	8	30.8%
E Robbery	6	85.7%	1	14.3%
F Theft And Handling	79	91.9%	7	8.1%
G Fraud And Forgery	8	88.9%	1	11.1%
H Criminal Damage	41	87.2%	6	12.8%
I Drugs Offences	18	85.7%	3	14.3%
J Public Order Offences	50	92.6%	4	7.4%
K All Other Offences (excluding Motoring)	38	84.4%	7	15.6%
L Motoring Offences	563	90.8%	57	9.2%
Admin Finalisations	0	0.0%	5	100.0%
TOTAL	929	87.9%	128	12.1%