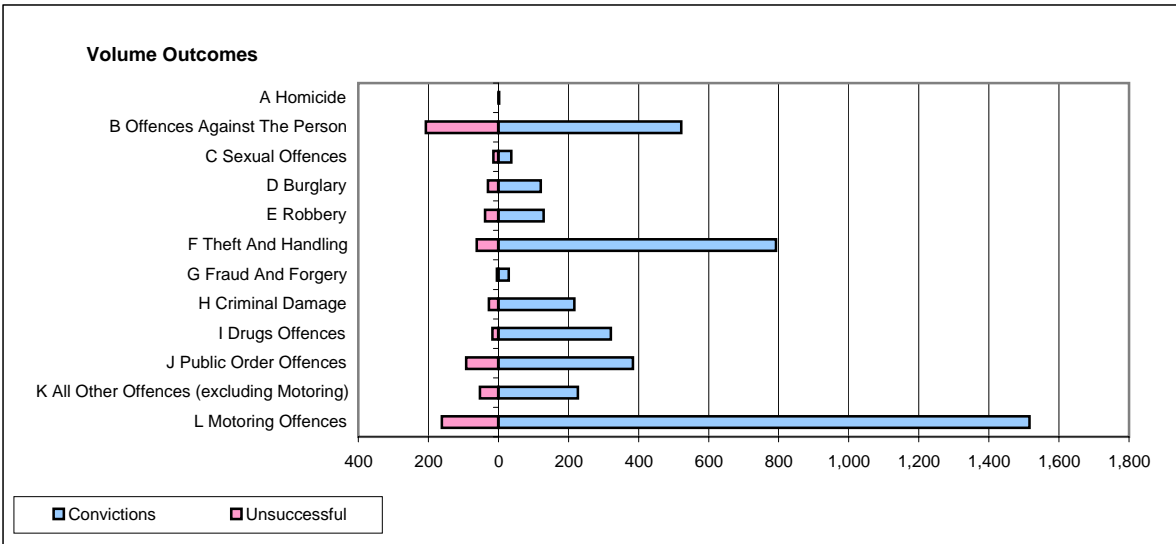
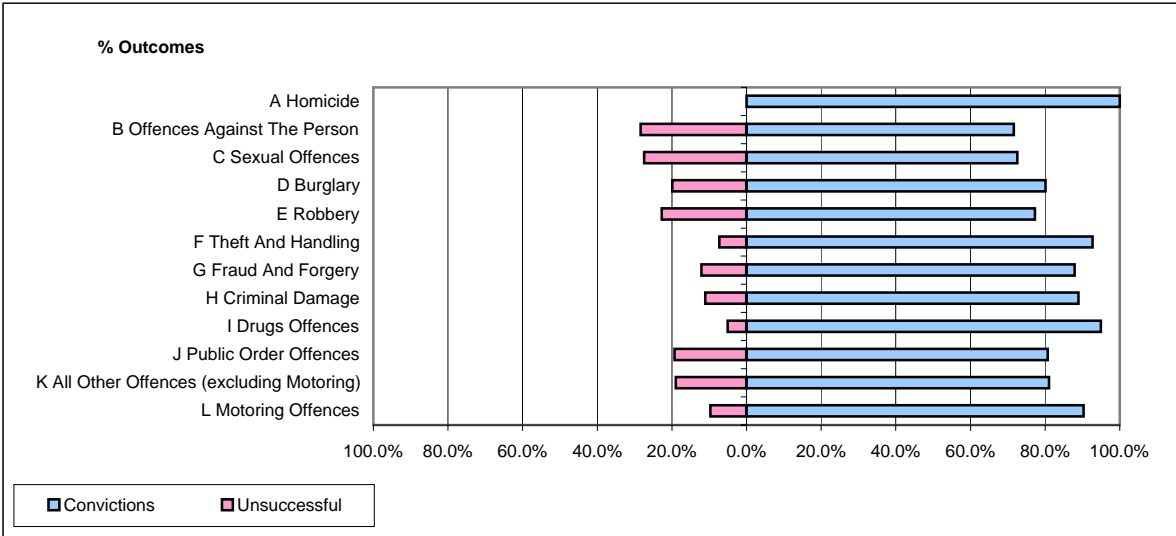


CPS OUTCOMES BY PRINCIPAL OFFENCE CATEGORY

February 2008

P41-WestMidlands



	Convictions		Unsuccessful	
	Number of Defendants	%	Number of Defendants	%
A Homicide	2	100.0%	0	0.0%
B Offences Against The Person	522	71.6%	207	28.4%
C Sexual Offences	37	72.5%	14	27.5%
D Burglary	121	80.1%	30	19.9%
E Robbery	129	77.2%	38	22.8%
F Theft And Handling	792	92.7%	62	7.3%
G Fraud And Forgery	29	87.9%	4	12.1%
H Criminal Damage	217	88.9%	27	11.1%
I Drugs Offences	321	95.0%	17	5.0%
J Public Order Offences	384	80.7%	92	19.3%
K All Other Offences (excluding Motoring)	227	81.1%	53	18.9%
L Motoring Offences	1,516	90.3%	162	9.7%
Admin Finalisations	0	0.0%	118	100.0%
TOTAL	4,297	83.9%	824	16.1%