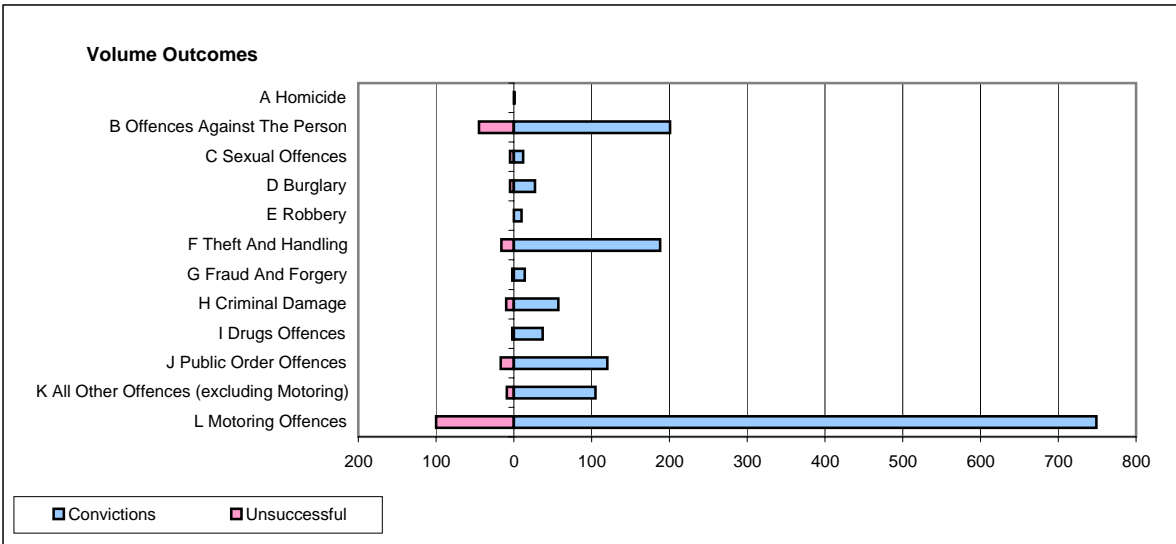
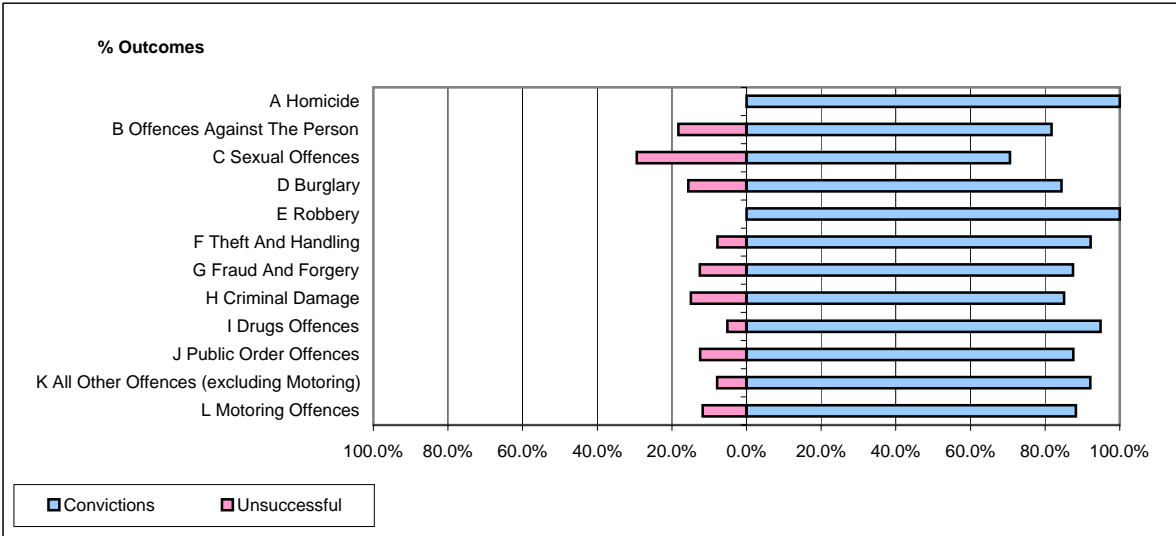


**CPS OUTCOMES BY PRINCIPAL OFFENCE CATEGORY**

**February 2008**

**P40-WestMercia**



	Convictions		Unsuccessful	
	Number of Defendants	%	Number of Defendants	%
<b>A Homicide</b>	<b>1</b>	<b>100.0%</b>	<b>0</b>	<b>0.0%</b>
<b>B Offences Against The Person</b>	<b>201</b>	<b>81.7%</b>	<b>45</b>	<b>18.3%</b>
<b>C Sexual Offences</b>	<b>12</b>	<b>70.6%</b>	<b>5</b>	<b>29.4%</b>
<b>D Burglary</b>	<b>27</b>	<b>84.4%</b>	<b>5</b>	<b>15.6%</b>
<b>E Robbery</b>	<b>10</b>	<b>100.0%</b>	<b>0</b>	<b>0.0%</b>
<b>F Theft And Handling</b>	<b>188</b>	<b>92.2%</b>	<b>16</b>	<b>7.8%</b>
<b>G Fraud And Forgery</b>	<b>14</b>	<b>87.5%</b>	<b>2</b>	<b>12.5%</b>
<b>H Criminal Damage</b>	<b>57</b>	<b>85.1%</b>	<b>10</b>	<b>14.9%</b>
<b>I Drugs Offences</b>	<b>37</b>	<b>94.9%</b>	<b>2</b>	<b>5.1%</b>
<b>J Public Order Offences</b>	<b>120</b>	<b>87.6%</b>	<b>17</b>	<b>12.4%</b>
<b>K All Other Offences (excluding Motoring)</b>	<b>105</b>	<b>92.1%</b>	<b>9</b>	<b>7.9%</b>
<b>L Motoring Offences</b>	<b>749</b>	<b>88.2%</b>	<b>100</b>	<b>11.8%</b>
<b>Admin Finalisations</b>	<b>0</b>	<b>0.0%</b>	<b>28</b>	<b>100.0%</b>
<b>TOTAL</b>	<b>1,521</b>	<b>86.4%</b>	<b>239</b>	<b>13.6%</b>