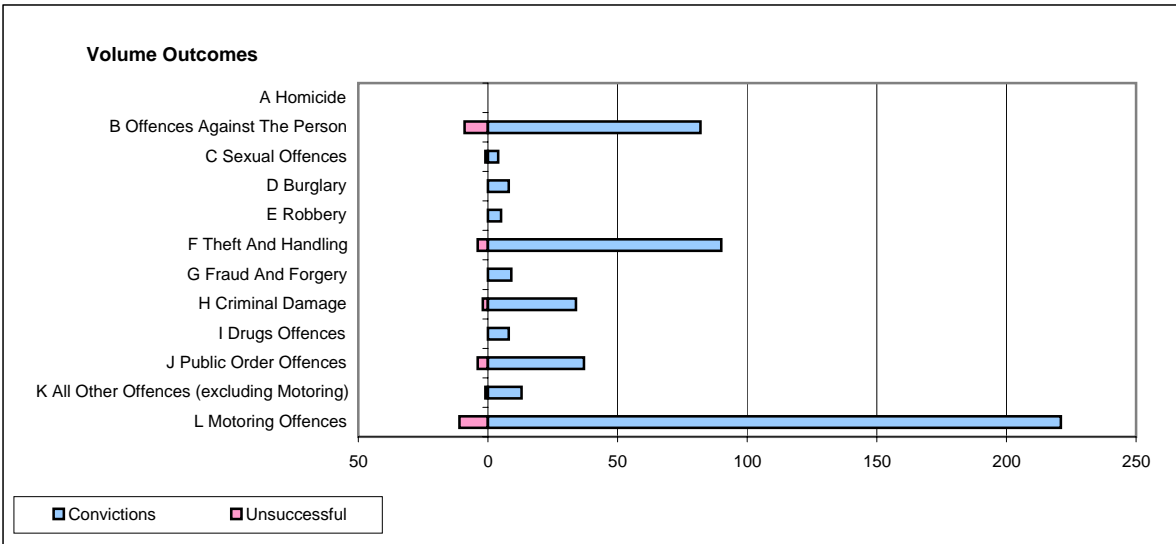
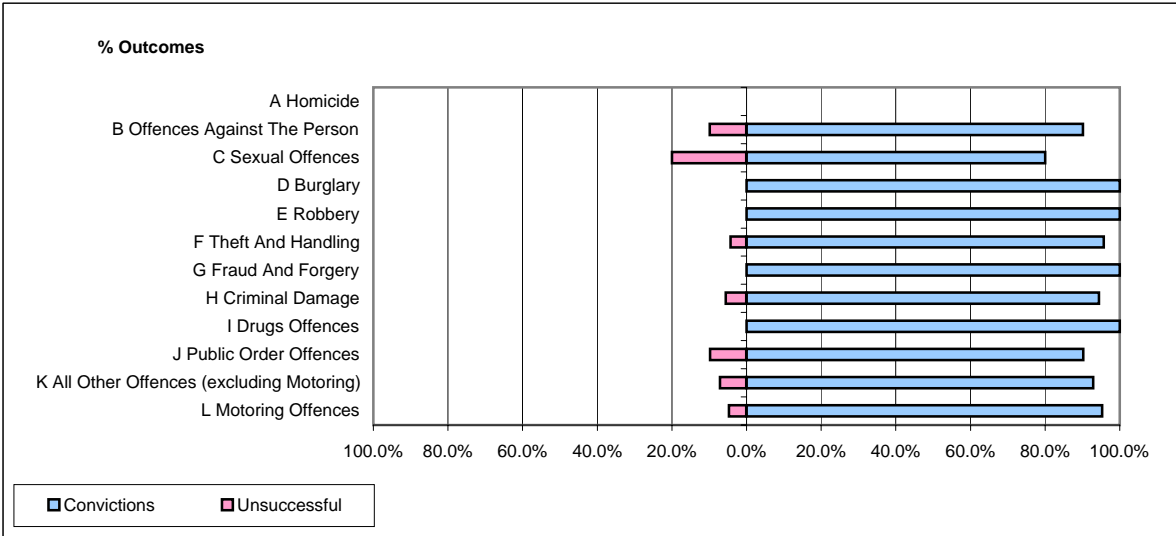


CPS OUTCOMES BY PRINCIPAL OFFENCE CATEGORY

February 2008

P39-Warwickshire



	Convictions		Unsuccessful	
	Number of Defendants	%	Number of Defendants	%
A Homicide	0	0	0	0
B Offences Against The Person	82	90.1%	9	9.9%
C Sexual Offences	4	80.0%	1	20.0%
D Burglary	8	100.0%	0	0.0%
E Robbery	5	100.0%	0	0.0%
F Theft And Handling	90	95.7%	4	4.3%
G Fraud And Forgery	9	100.0%	0	0.0%
H Criminal Damage	34	94.4%	2	5.6%
I Drugs Offences	8	100.0%	0	0.0%
J Public Order Offences	37	90.2%	4	9.8%
K All Other Offences (excluding Motoring)	13	92.9%	1	7.1%
L Motoring Offences	221	95.3%	11	4.7%
Admin Finalisations	0	0.0%	5	100.0%
TOTAL	511	93.2%	37	6.8%