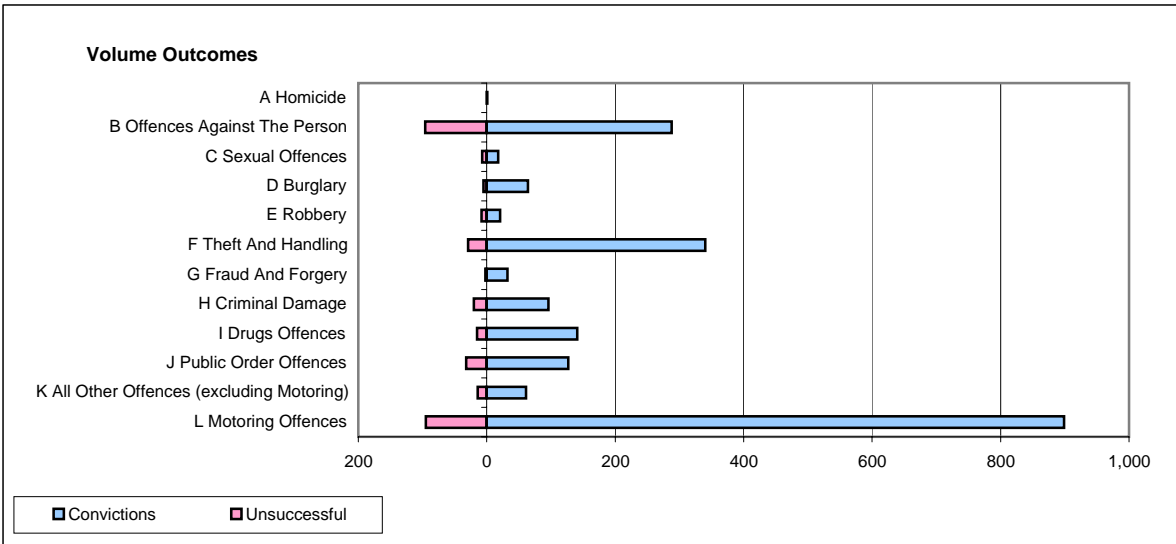
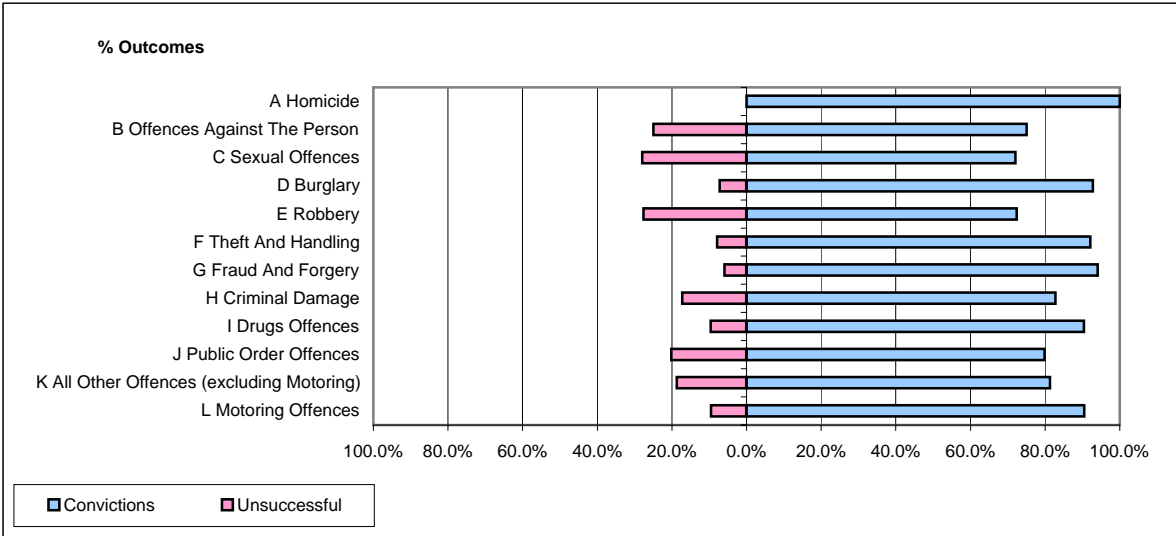


CPS OUTCOMES BY PRINCIPAL OFFENCE CATEGORY

February 2008

P38-ThamesValley



| | Convictions | | Unsuccessful | |
|--|----------------------|--------------|----------------------|--------------|
| | Number of Defendants | % | Number of Defendants | % |
| A Homicide | 1 | 100.0% | 0 | 0.0% |
| B Offences Against The Person | 288 | 75.0% | 96 | 25.0% |
| C Sexual Offences | 18 | 72.0% | 7 | 28.0% |
| D Burglary | 64 | 92.8% | 5 | 7.2% |
| E Robbery | 21 | 72.4% | 8 | 27.6% |
| F Theft And Handling | 340 | 92.1% | 29 | 7.9% |
| G Fraud And Forgery | 32 | 94.1% | 2 | 5.9% |
| H Criminal Damage | 96 | 82.8% | 20 | 17.2% |
| I Drugs Offences | 141 | 90.4% | 15 | 9.6% |
| J Public Order Offences | 127 | 79.9% | 32 | 20.1% |
| K All Other Offences (excluding Motoring) | 61 | 81.3% | 14 | 18.7% |
| L Motoring Offences | 899 | 90.4% | 95 | 9.6% |
| Admin Finalisations | 0 | 0.0% | 67 | 100.0% |
| TOTAL | 2,088 | 84.3% | 390 | 15.7% |