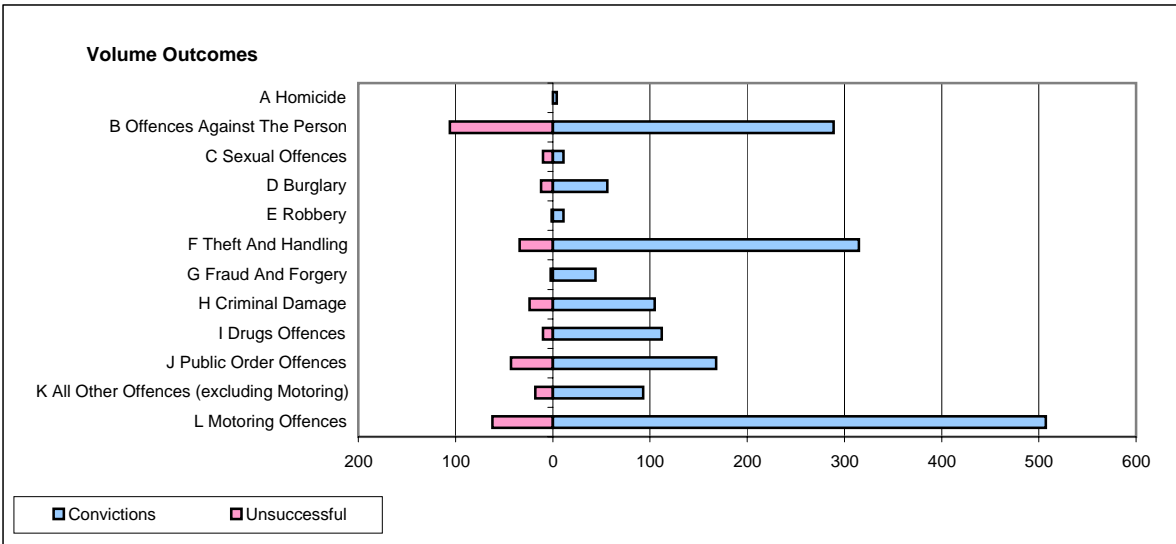
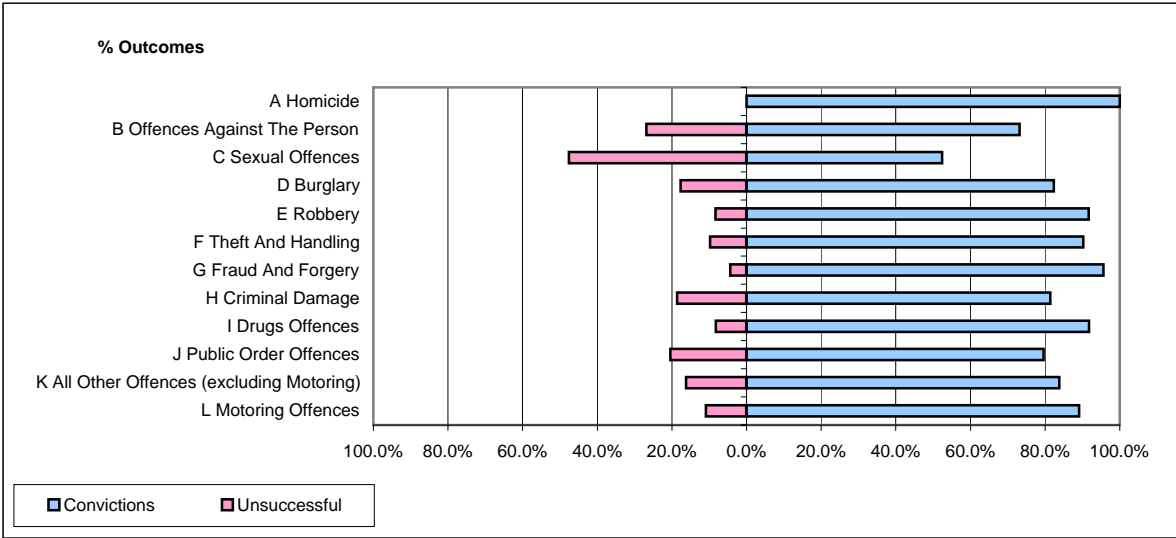


CPS OUTCOMES BY PRINCIPAL OFFENCE CATEGORY

February 2008

P37-Sussex



	Convictions		Unsuccessful	
	Number of Defendants	%	Number of Defendants	%
A Homicide	4	100.0%	0	0.0%
B Offences Against The Person	289	73.2%	106	26.8%
C Sexual Offences	11	52.4%	10	47.6%
D Burglary	56	82.4%	12	17.6%
E Robbery	11	91.7%	1	8.3%
F Theft And Handling	315	90.3%	34	9.7%
G Fraud And Forgery	44	95.7%	2	4.3%
H Criminal Damage	105	81.4%	24	18.6%
I Drugs Offences	112	91.8%	10	8.2%
J Public Order Offences	168	79.6%	43	20.4%
K All Other Offences (excluding Motoring)	93	83.8%	18	16.2%
L Motoring Offences	507	89.1%	62	10.9%
Admin Finalisations	0	0.0%	29	100.0%
TOTAL	1,715	83.0%	351	17.0%