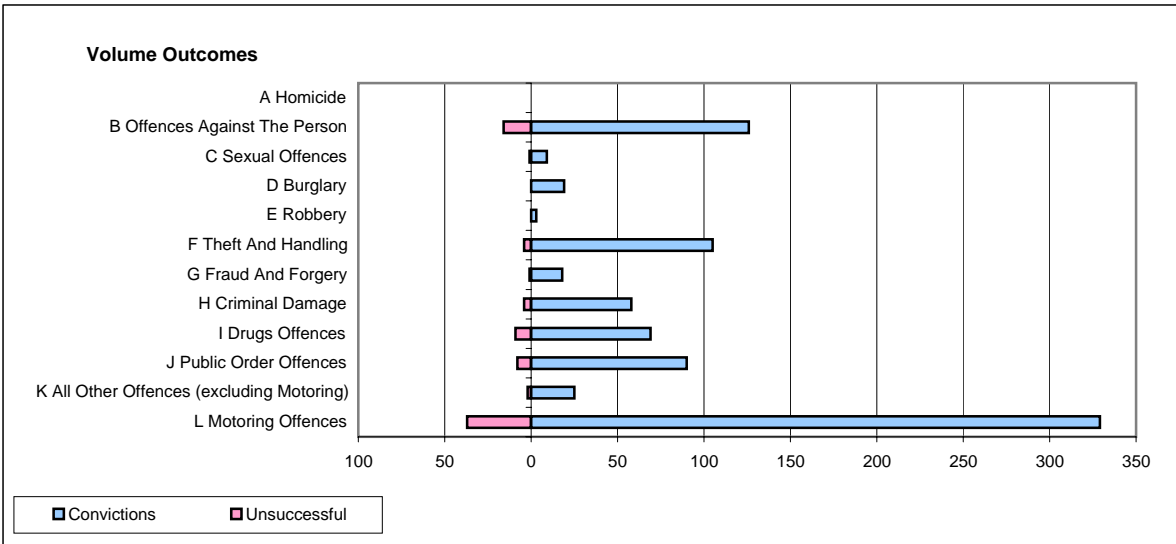
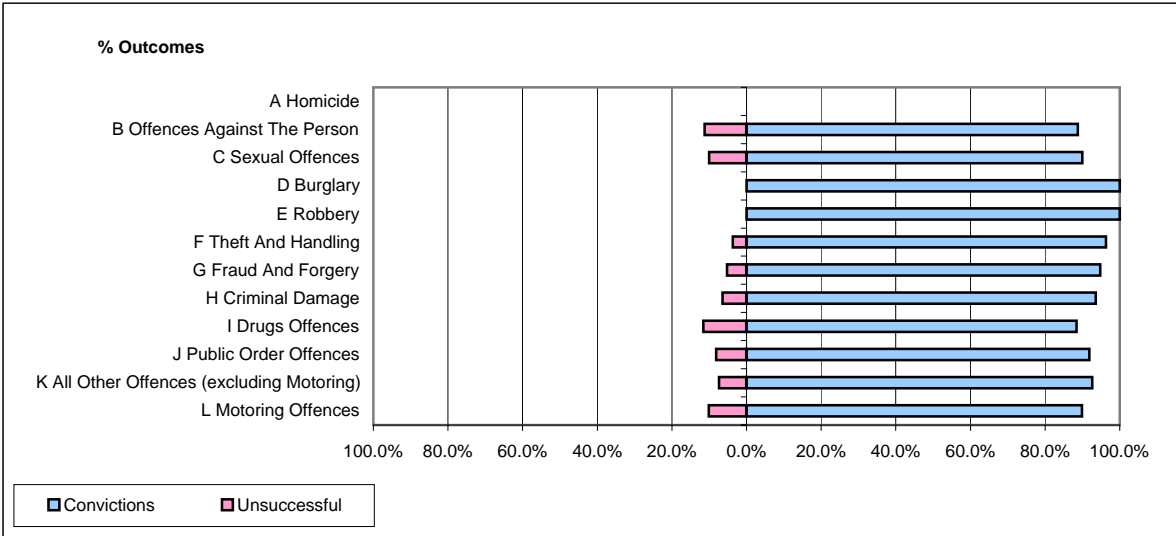


CPS OUTCOMES BY PRINCIPAL OFFENCE CATEGORY

February 2008

P35-Suffolk



	Convictions		Unsuccessful	
	Number of Defendants	%	Number of Defendants	%
A Homicide	0	0	0	0
B Offences Against The Person	126	88.7%	16	11.3%
C Sexual Offences	9	90.0%	1	10.0%
D Burglary	19	100.0%	0	0.0%
E Robbery	3	100.0%	0	0.0%
F Theft And Handling	105	96.3%	4	3.7%
G Fraud And Forgery	18	94.7%	1	5.3%
H Criminal Damage	58	93.5%	4	6.5%
I Drugs Offences	69	88.5%	9	11.5%
J Public Order Offences	90	91.8%	8	8.2%
K All Other Offences (excluding Motoring)	25	92.6%	2	7.4%
L Motoring Offences	329	89.9%	37	10.1%
Admin Finalisations	0	0.0%	6	100.0%
TOTAL	851	90.6%	88	9.4%