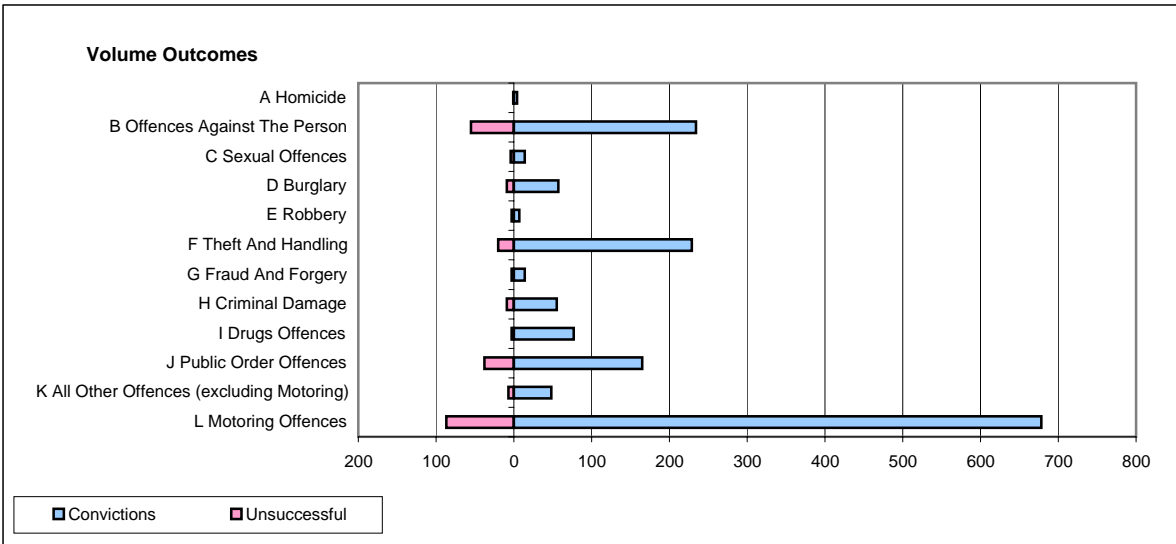
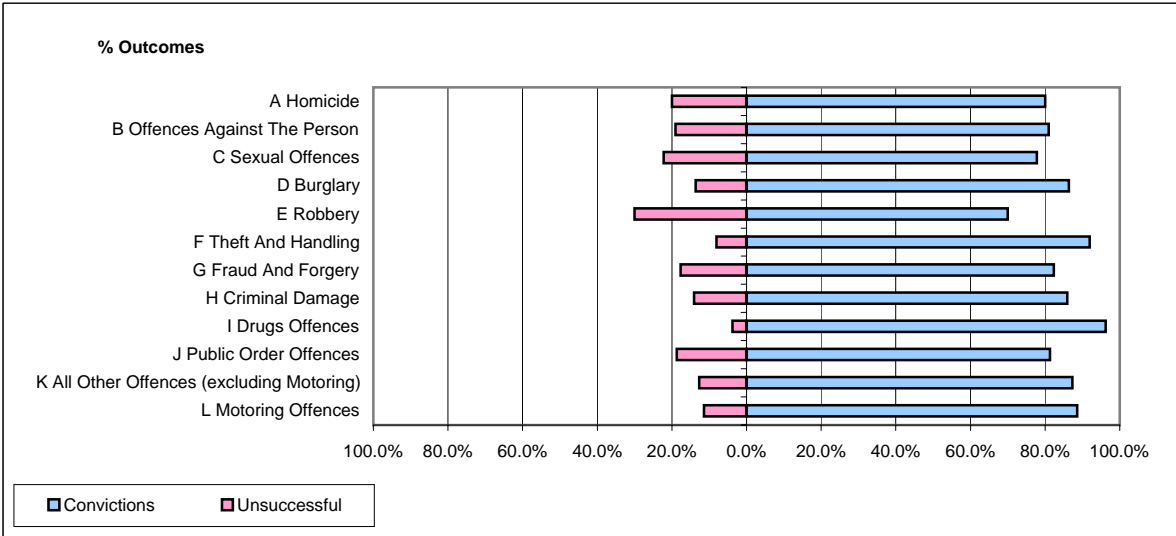


CPS OUTCOMES BY PRINCIPAL OFFENCE CATEGORY

February 2008

P34-Staffordshire



	Convictions		Unsuccessful	
	Number of Defendants	%	Number of Defendants	%
A Homicide	4	80.0%	1	20.0%
B Offences Against The Person	234	81.0%	55	19.0%
C Sexual Offences	14	77.8%	4	22.2%
D Burglary	57	86.4%	9	13.6%
E Robbery	7	70.0%	3	30.0%
F Theft And Handling	229	92.0%	20	8.0%
G Fraud And Forgery	14	82.4%	3	17.6%
H Criminal Damage	55	85.9%	9	14.1%
I Drugs Offences	77	96.3%	3	3.8%
J Public Order Offences	165	81.3%	38	18.7%
K All Other Offences (excluding Motoring)	48	87.3%	7	12.7%
L Motoring Offences	678	88.6%	87	11.4%
Admin Finalisations	0	0.0%	23	100.0%
TOTAL	1,582	85.8%	262	14.2%