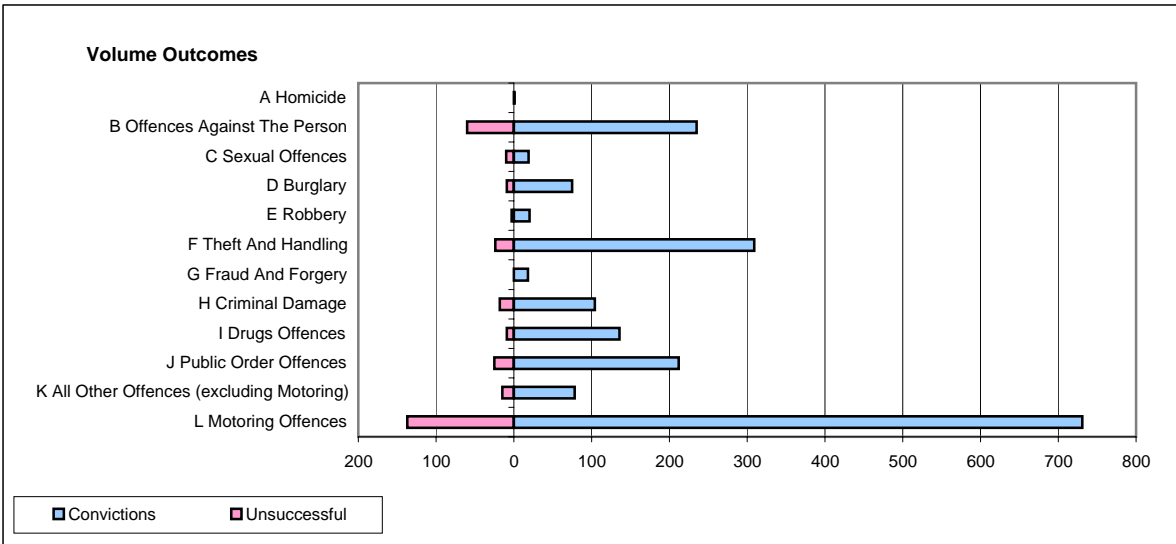
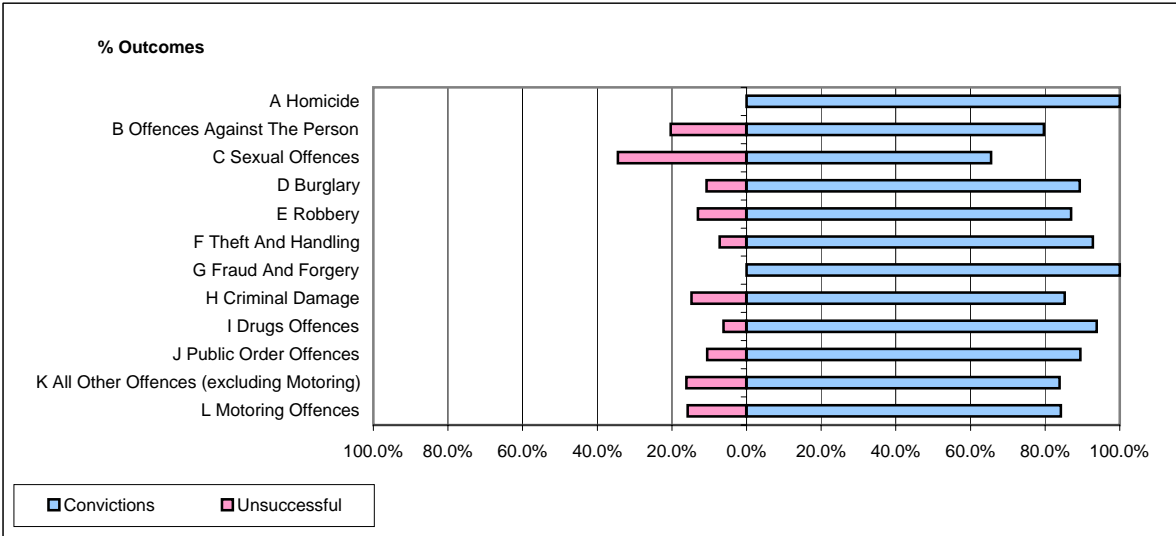


CPS OUTCOMES BY PRINCIPAL OFFENCE CATEGORY

February 2008

P32-SouthWales



	Convictions		Unsuccessful	
	Number of Defendants	%	Number of Defendants	%
A Homicide	1	100.0%	0	0.0%
B Offences Against The Person	235	79.7%	60	20.3%
C Sexual Offences	19	65.5%	10	34.5%
D Burglary	75	89.3%	9	10.7%
E Robbery	20	87.0%	3	13.0%
F Theft And Handling	309	92.8%	24	7.2%
G Fraud And Forgery	18	100.0%	0	0.0%
H Criminal Damage	104	85.2%	18	14.8%
I Drugs Offences	136	93.8%	9	6.2%
J Public Order Offences	212	89.5%	25	10.5%
K All Other Offences (excluding Motoring)	78	83.9%	15	16.1%
L Motoring Offences	731	84.2%	137	15.8%
Admin Finalisations	0	0.0%	67	100.0%
TOTAL	1,938	83.7%	377	16.3%