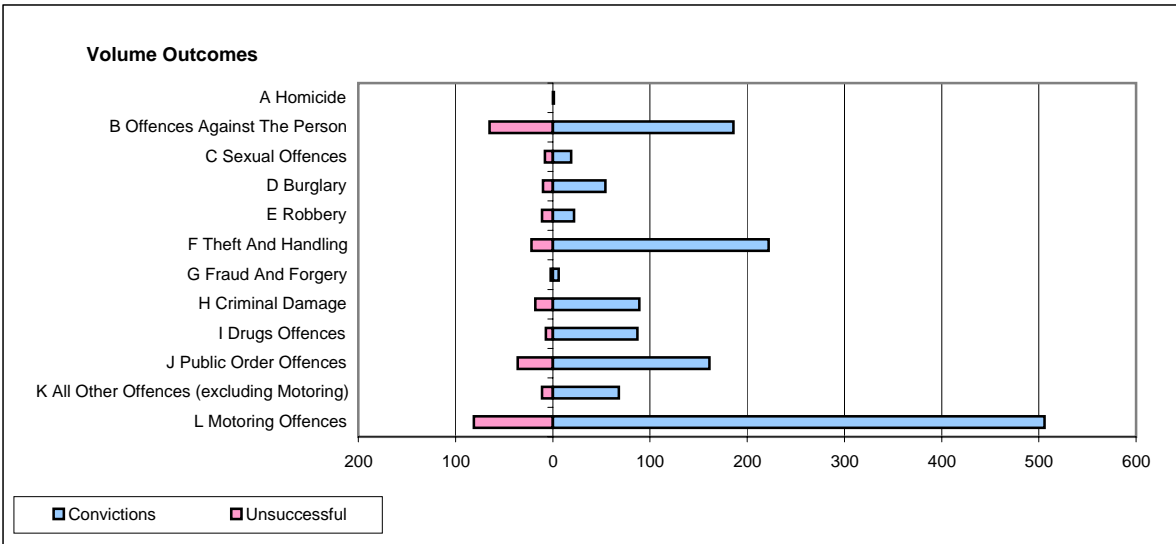
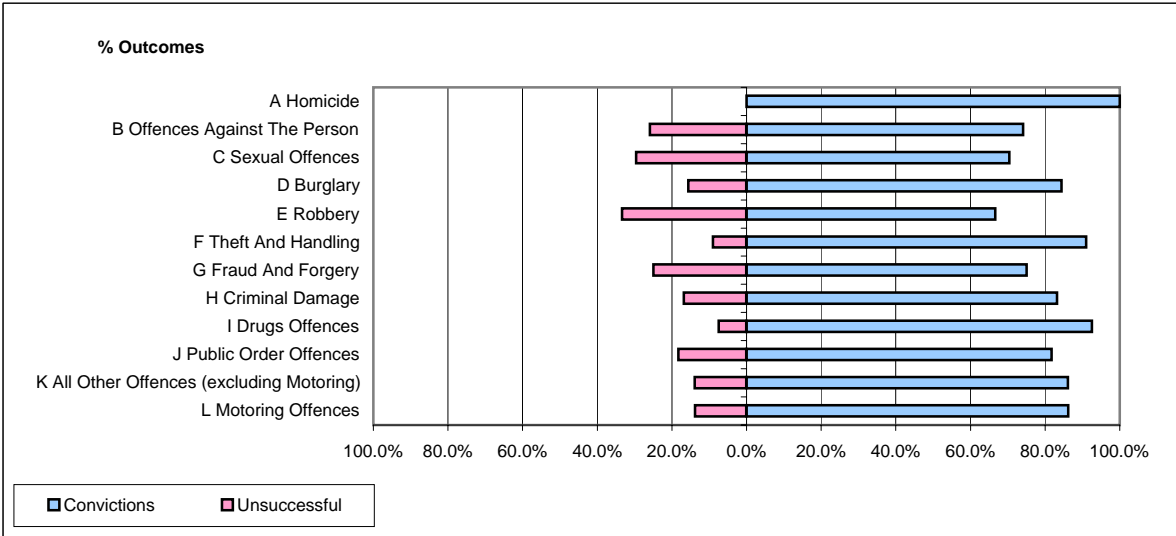


**CPS OUTCOMES BY PRINCIPAL OFFENCE CATEGORY**

**February 2008**

**P31-Nottinghamshire**



	Convictions		Unsuccessful	
	Number of Defendants	%	Number of Defendants	%
<b>A Homicide</b>	<b>1</b>	<b>100.0%</b>	<b>0</b>	<b>0.0%</b>
<b>B Offences Against The Person</b>	<b>186</b>	<b>74.1%</b>	<b>65</b>	<b>25.9%</b>
<b>C Sexual Offences</b>	<b>19</b>	<b>70.4%</b>	<b>8</b>	<b>29.6%</b>
<b>D Burglary</b>	<b>54</b>	<b>84.4%</b>	<b>10</b>	<b>15.6%</b>
<b>E Robbery</b>	<b>22</b>	<b>66.7%</b>	<b>11</b>	<b>33.3%</b>
<b>F Theft And Handling</b>	<b>222</b>	<b>91.0%</b>	<b>22</b>	<b>9.0%</b>
<b>G Fraud And Forgery</b>	<b>6</b>	<b>75.0%</b>	<b>2</b>	<b>25.0%</b>
<b>H Criminal Damage</b>	<b>89</b>	<b>83.2%</b>	<b>18</b>	<b>16.8%</b>
<b>I Drugs Offences</b>	<b>87</b>	<b>92.6%</b>	<b>7</b>	<b>7.4%</b>
<b>J Public Order Offences</b>	<b>161</b>	<b>81.7%</b>	<b>36</b>	<b>18.3%</b>
<b>K All Other Offences (excluding Motoring)</b>	<b>68</b>	<b>86.1%</b>	<b>11</b>	<b>13.9%</b>
<b>L Motoring Offences</b>	<b>506</b>	<b>86.2%</b>	<b>81</b>	<b>13.8%</b>
<b>Admin Finalisations</b>	<b>0</b>	<b>0.0%</b>	<b>18</b>	<b>100.0%</b>
<b>TOTAL</b>	<b>1,421</b>	<b>83.1%</b>	<b>289</b>	<b>16.9%</b>