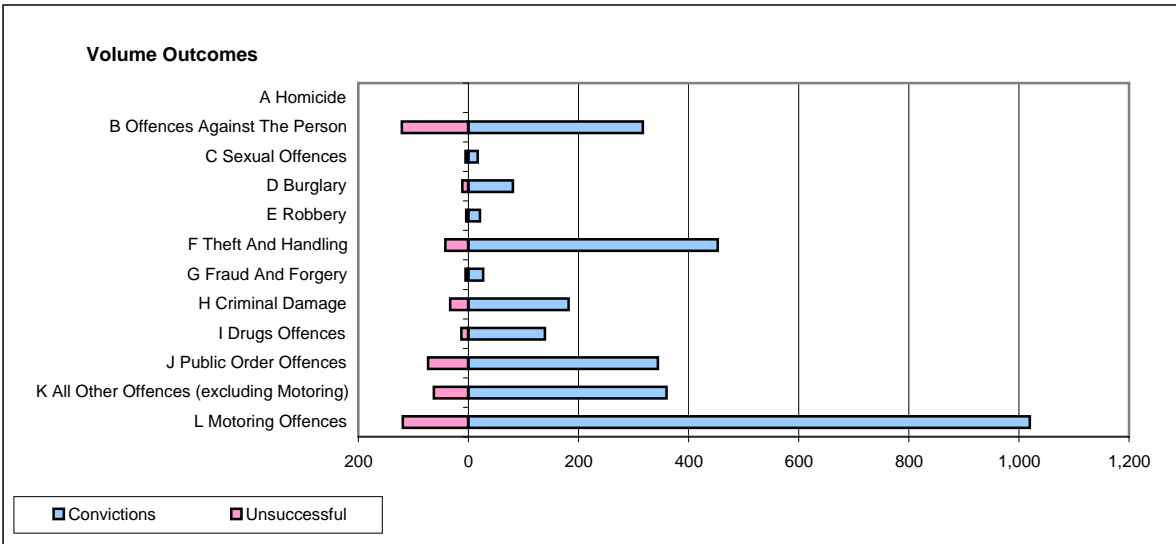
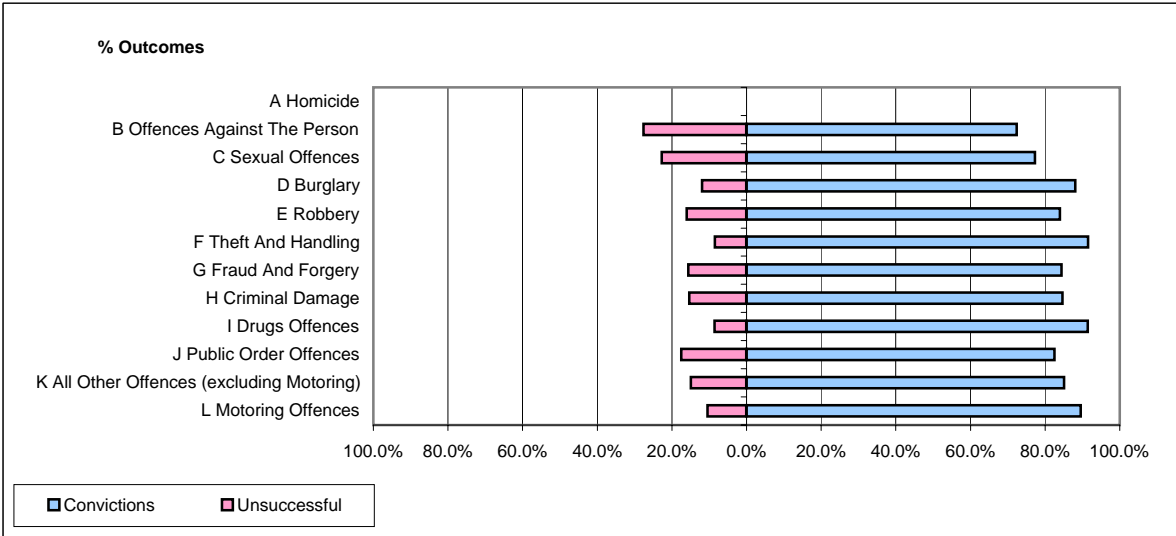


**CPS OUTCOMES BY PRINCIPAL OFFENCE CATEGORY**

**February 2008**

**P28-Northumbria**



	Convictions		Unsuccessful	
	Number of Defendants	%	Number of Defendants	%
<b>A Homicide</b>	<b>0</b>	<b>0</b>	<b>0</b>	<b>0</b>
<b>B Offences Against The Person</b>	<b>317</b>	<b>72.4%</b>	<b>121</b>	<b>27.6%</b>
<b>C Sexual Offences</b>	<b>17</b>	<b>77.3%</b>	<b>5</b>	<b>22.7%</b>
<b>D Burglary</b>	<b>81</b>	<b>88.0%</b>	<b>11</b>	<b>12.0%</b>
<b>E Robbery</b>	<b>21</b>	<b>84.0%</b>	<b>4</b>	<b>16.0%</b>
<b>F Theft And Handling</b>	<b>453</b>	<b>91.5%</b>	<b>42</b>	<b>8.5%</b>
<b>G Fraud And Forgery</b>	<b>27</b>	<b>84.4%</b>	<b>5</b>	<b>15.6%</b>
<b>H Criminal Damage</b>	<b>182</b>	<b>84.7%</b>	<b>33</b>	<b>15.3%</b>
<b>I Drugs Offences</b>	<b>139</b>	<b>91.4%</b>	<b>13</b>	<b>8.6%</b>
<b>J Public Order Offences</b>	<b>344</b>	<b>82.5%</b>	<b>73</b>	<b>17.5%</b>
<b>K All Other Offences (excluding Motoring)</b>	<b>360</b>	<b>85.1%</b>	<b>63</b>	<b>14.9%</b>
<b>L Motoring Offences</b>	<b>1,020</b>	<b>89.6%</b>	<b>119</b>	<b>10.4%</b>
<b>Admin Finalisations</b>	<b>0</b>	<b>0.0%</b>	<b>41</b>	<b>100.0%</b>
<b>TOTAL</b>	<b>2,961</b>	<b>84.8%</b>	<b>530</b>	<b>15.2%</b>