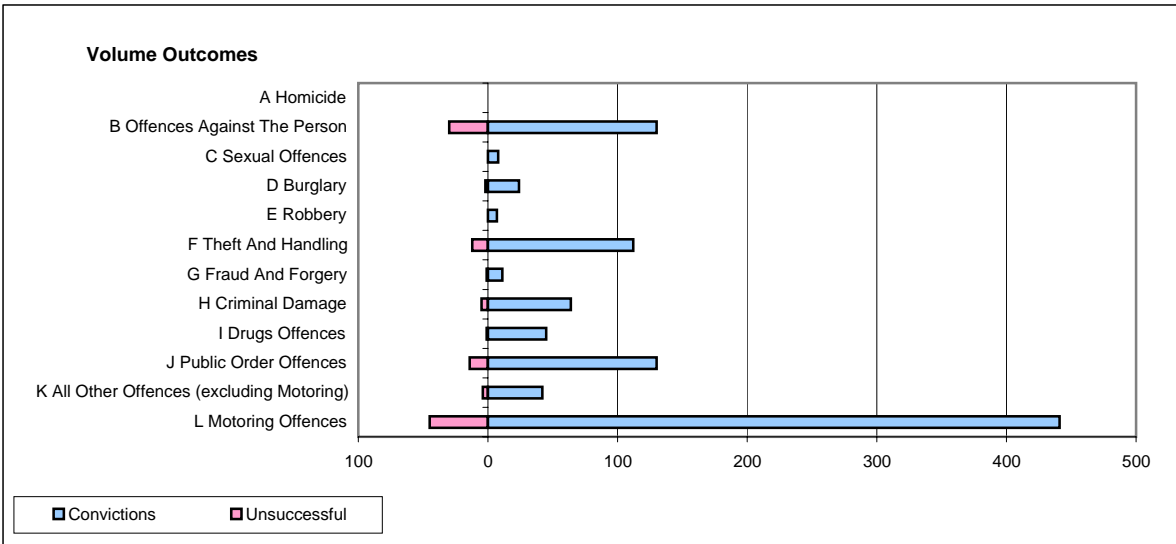
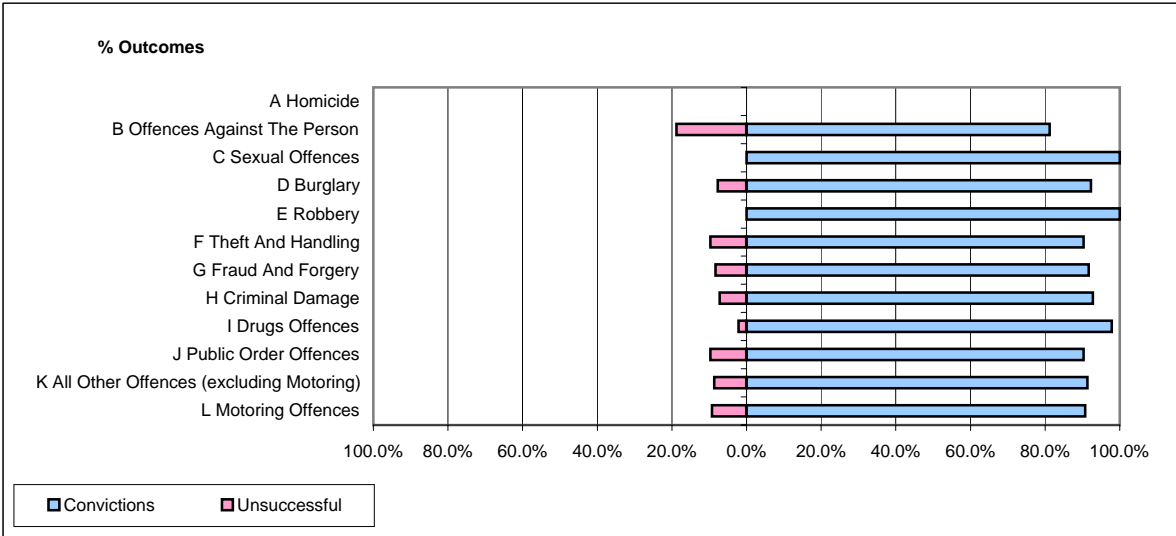


CPS OUTCOMES BY PRINCIPAL OFFENCE CATEGORY

February 2008

P29-NorthWales



	Convictions		Unsuccessful	
	Number of Defendants	%	Number of Defendants	%
A Homicide	0	0	0	0
B Offences Against The Person	130	81.3%	30	18.8%
C Sexual Offences	8	100.0%	0	0.0%
D Burglary	24	92.3%	2	7.7%
E Robbery	7	100.0%	0	0.0%
F Theft And Handling	112	90.3%	12	9.7%
G Fraud And Forgery	11	91.7%	1	8.3%
H Criminal Damage	64	92.8%	5	7.2%
I Drugs Offences	45	97.8%	1	2.2%
J Public Order Offences	130	90.3%	14	9.7%
K All Other Offences (excluding Motoring)	42	91.3%	4	8.7%
L Motoring Offences	441	90.7%	45	9.3%
Admin Finalisations	0	0.0%	5	100.0%
TOTAL	1,014	89.5%	119	10.5%