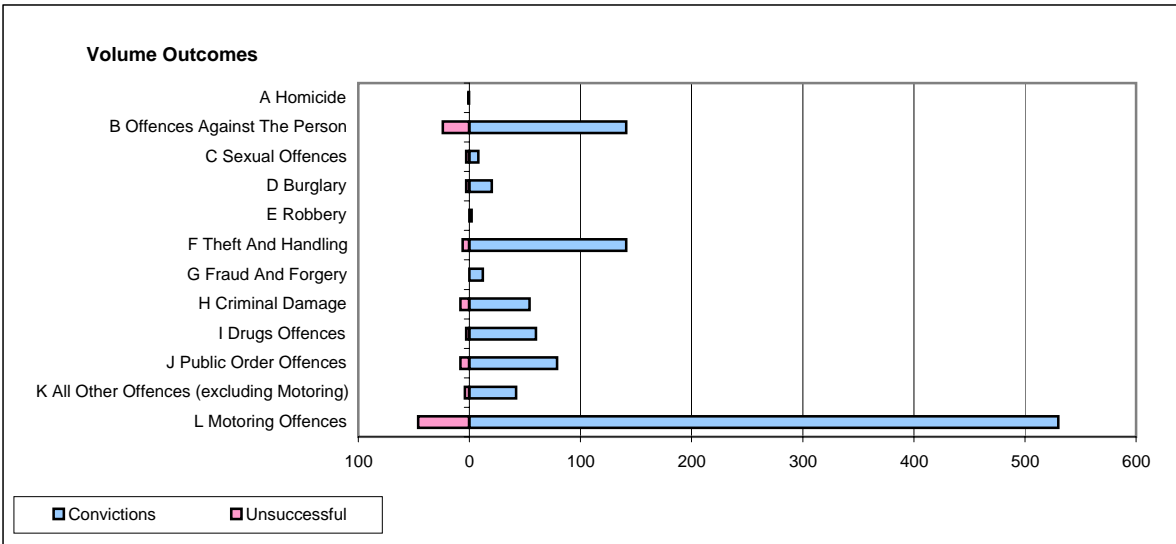
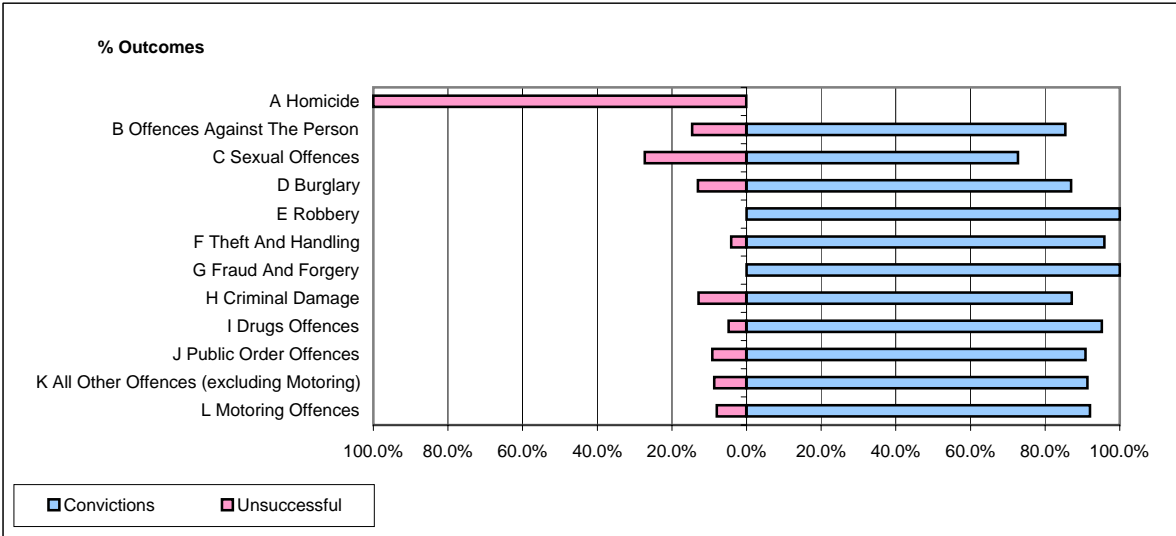


CPS OUTCOMES BY PRINCIPAL OFFENCE CATEGORY

February 2008

P26-Norfolk



	Convictions		Unsuccessful	
	Number of Defendants	%	Number of Defendants	%
A Homicide	0	0.0%	1	100.0%
B Offences Against The Person	141	85.5%	24	14.5%
C Sexual Offences	8	72.7%	3	27.3%
D Burglary	20	87.0%	3	13.0%
E Robbery	2	100.0%	0	0.0%
F Theft And Handling	141	95.9%	6	4.1%
G Fraud And Forgery	12	100.0%	0	0.0%
H Criminal Damage	54	87.1%	8	12.9%
I Drugs Offences	60	95.2%	3	4.8%
J Public Order Offences	79	90.8%	8	9.2%
K All Other Offences (excluding Motoring)	42	91.3%	4	8.7%
L Motoring Offences	530	92.0%	46	8.0%
Admin Finalisations	0	0.0%	20	100.0%
TOTAL	1,089	89.6%	126	10.4%