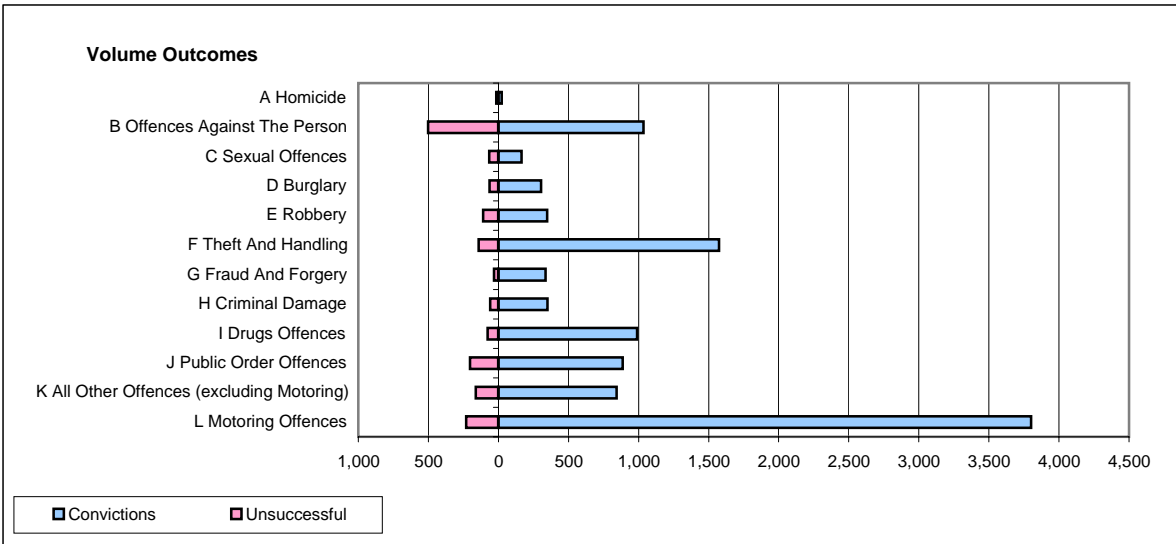
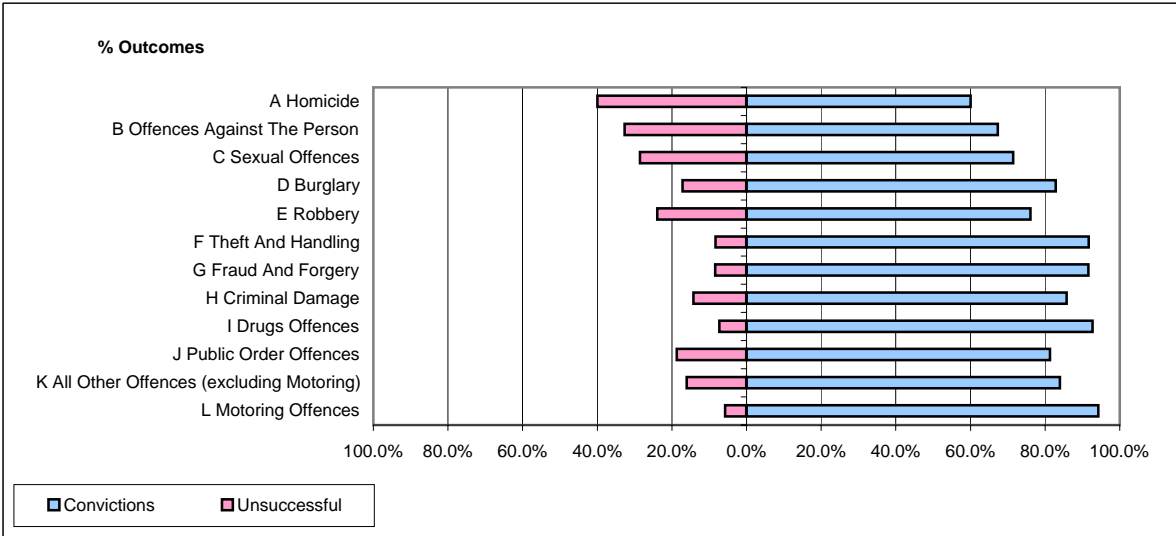


CPS OUTCOMES BY PRINCIPAL OFFENCE CATEGORY

February 2008

P25-Metropolitan&City



	Convictions		Unsuccessful	
	Number of Defendants	%	Number of Defendants	%
A Homicide	24	60.0%	16	40.0%
B Offences Against The Person	1,034	67.3%	502	32.7%
C Sexual Offences	165	71.4%	66	28.6%
D Burglary	304	82.8%	63	17.2%
E Robbery	347	76.1%	109	23.9%
F Theft And Handling	1,573	91.7%	142	8.3%
G Fraud And Forgery	337	91.6%	31	8.4%
H Criminal Damage	350	85.8%	58	14.2%
I Drugs Offences	989	92.7%	78	7.3%
J Public Order Offences	887	81.3%	204	18.7%
K All Other Offences (excluding Motoring)	843	84.0%	161	16.0%
L Motoring Offences	3,801	94.3%	231	5.7%
Admin Finalisations	0	0.0%	325	100.0%
TOTAL	10,654	84.3%	1,986	15.7%