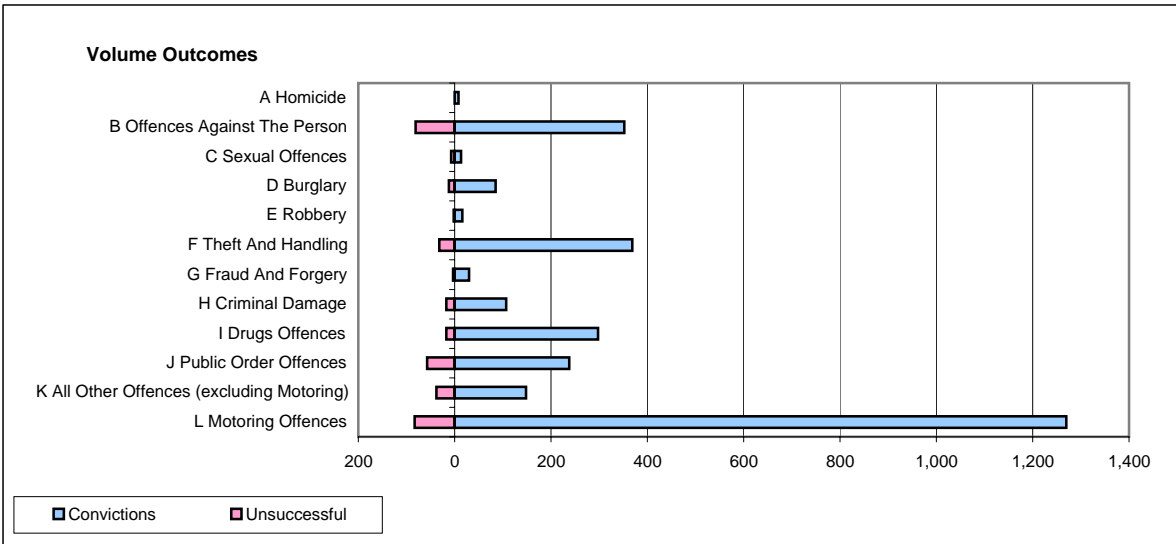
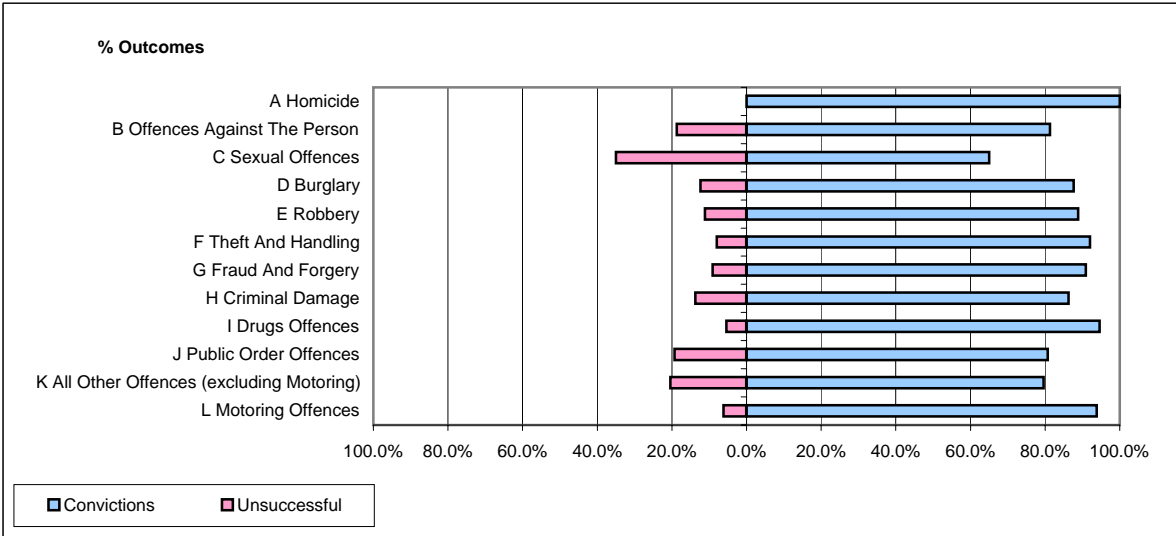


CPS OUTCOMES BY PRINCIPAL OFFENCE CATEGORY

February 2008

P24-Merseyside



	Convictions		Unsuccessful	
	Number of Defendants	%	Number of Defendants	%
A Homicide	8	100.0%	0	0.0%
B Offences Against The Person	352	81.3%	81	18.7%
C Sexual Offences	13	65.0%	7	35.0%
D Burglary	85	87.6%	12	12.4%
E Robbery	16	88.9%	2	11.1%
F Theft And Handling	369	92.0%	32	8.0%
G Fraud And Forgery	30	90.9%	3	9.1%
H Criminal Damage	107	86.3%	17	13.7%
I Drugs Offences	298	94.6%	17	5.4%
J Public Order Offences	238	80.7%	57	19.3%
K All Other Offences (excluding Motoring)	148	79.6%	38	20.4%
L Motoring Offences	1,270	93.9%	83	6.1%
Admin Finalisations	0	0.0%	69	100.0%
TOTAL	2,934	87.5%	418	12.5%