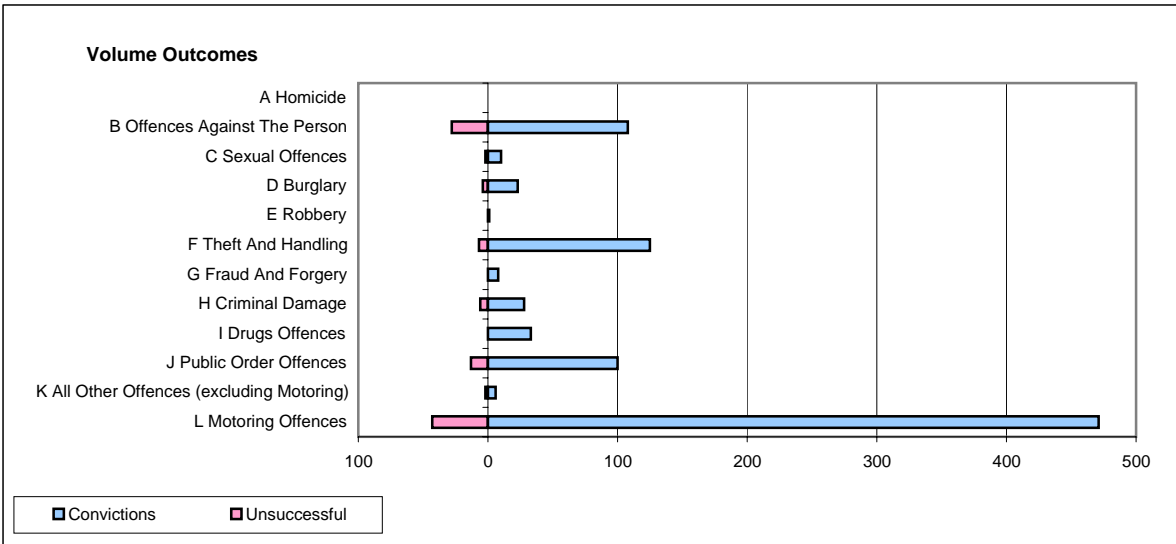
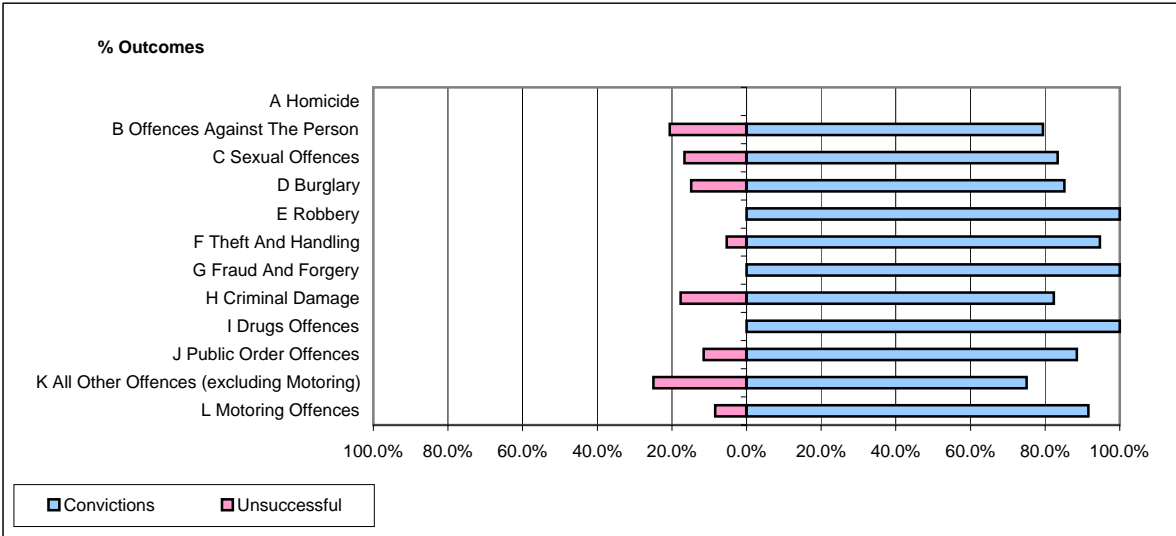


CPS OUTCOMES BY PRINCIPAL OFFENCE CATEGORY

February 2008

P23-Lincolnshire



	Convictions		Unsuccessful	
	Number of Defendants	%	Number of Defendants	%
A Homicide	0	0	0	0
B Offences Against The Person	108	79.4%	28	20.6%
C Sexual Offences	10	83.3%	2	16.7%
D Burglary	23	85.2%	4	14.8%
E Robbery	1	100.0%	0	0.0%
F Theft And Handling	125	94.7%	7	5.3%
G Fraud And Forgery	8	100.0%	0	0.0%
H Criminal Damage	28	82.4%	6	17.6%
I Drugs Offences	33	100.0%	0	0.0%
J Public Order Offences	100	88.5%	13	11.5%
K All Other Offences (excluding Motoring)	6	75.0%	2	25.0%
L Motoring Offences	471	91.6%	43	8.4%
Admin Finalisations	0	0.0%	8	100.0%
TOTAL	913	89.0%	113	11.0%