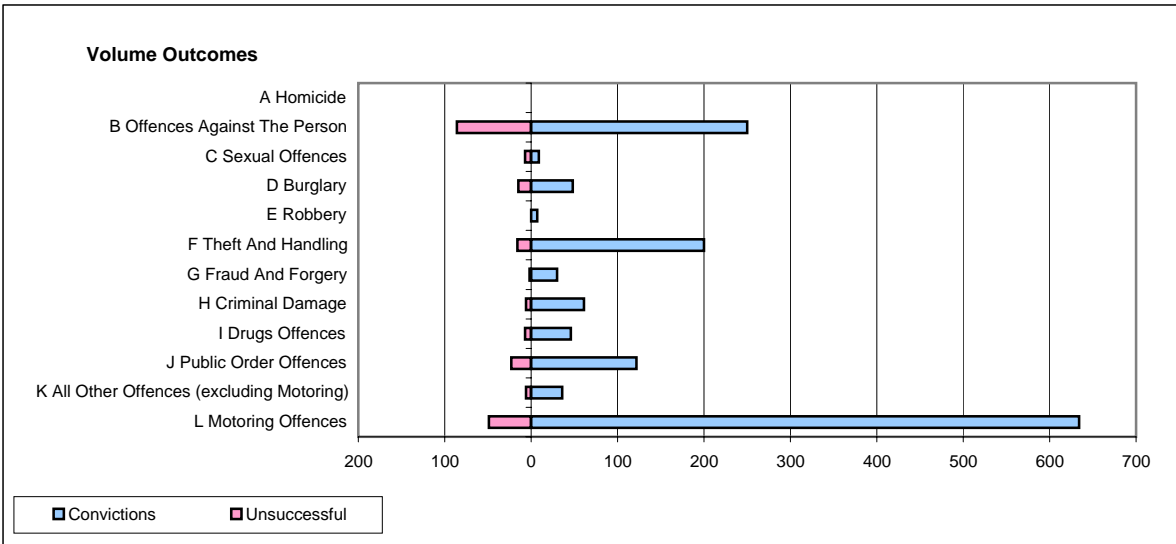
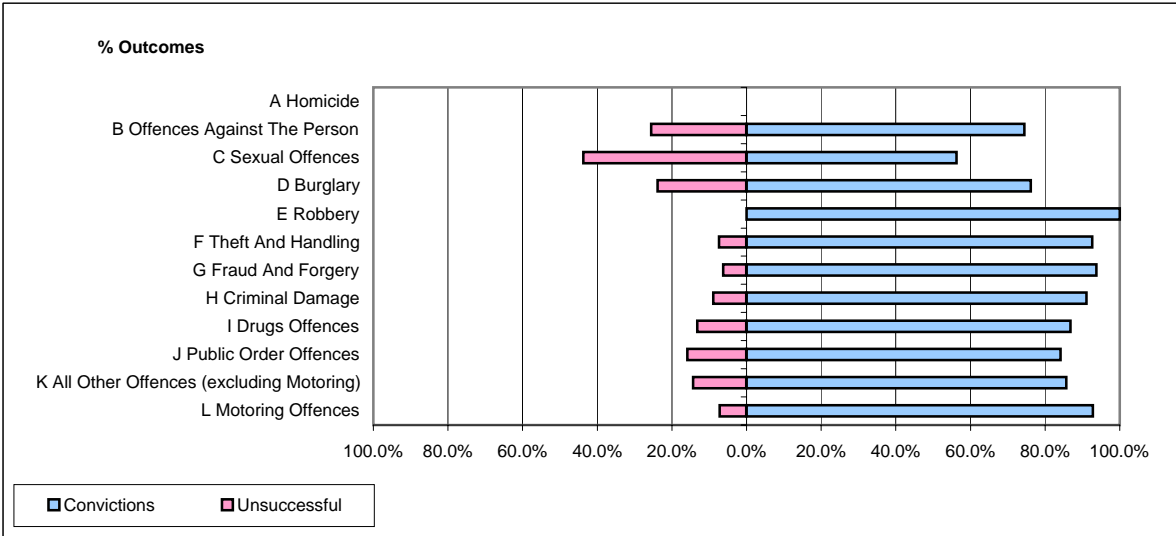


CPS OUTCOMES BY PRINCIPAL OFFENCE CATEGORY

February 2008

P22-Leicestershire



	Convictions		Unsuccessful	
	Number of Defendants	%	Number of Defendants	%
A Homicide	0	0	0	0
B Offences Against The Person	250	74.4%	86	25.6%
C Sexual Offences	9	56.3%	7	43.8%
D Burglary	48	76.2%	15	23.8%
E Robbery	7	100.0%	0	0.0%
F Theft And Handling	200	92.6%	16	7.4%
G Fraud And Forgery	30	93.8%	2	6.3%
H Criminal Damage	61	91.0%	6	9.0%
I Drugs Offences	46	86.8%	7	13.2%
J Public Order Offences	122	84.1%	23	15.9%
K All Other Offences (excluding Motoring)	36	85.7%	6	14.3%
L Motoring Offences	634	92.8%	49	7.2%
Admin Finalisations	0	0.0%	32	100.0%
TOTAL	1,443	85.3%	249	14.7%