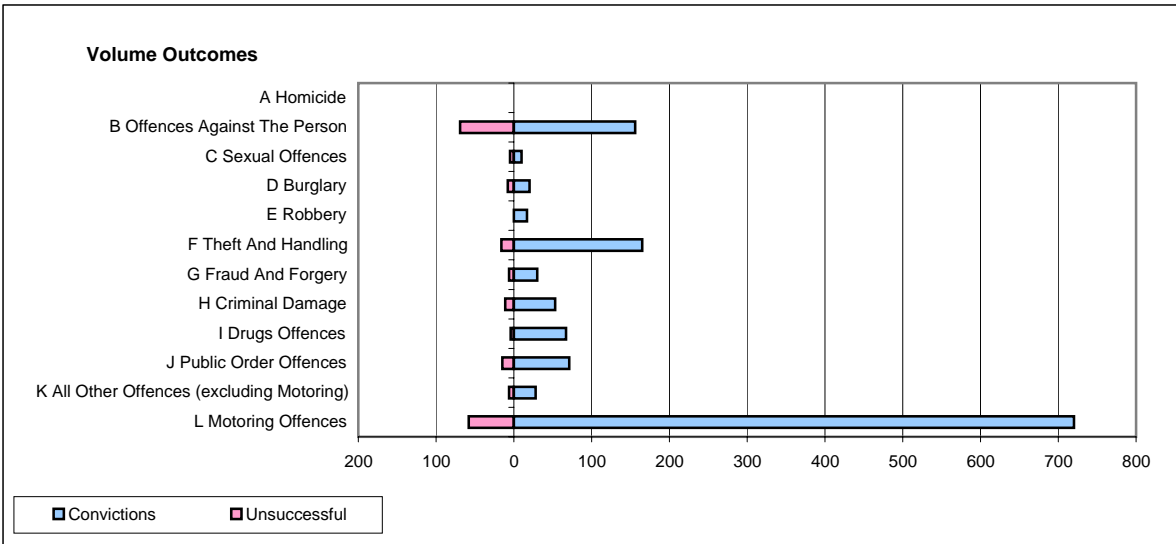
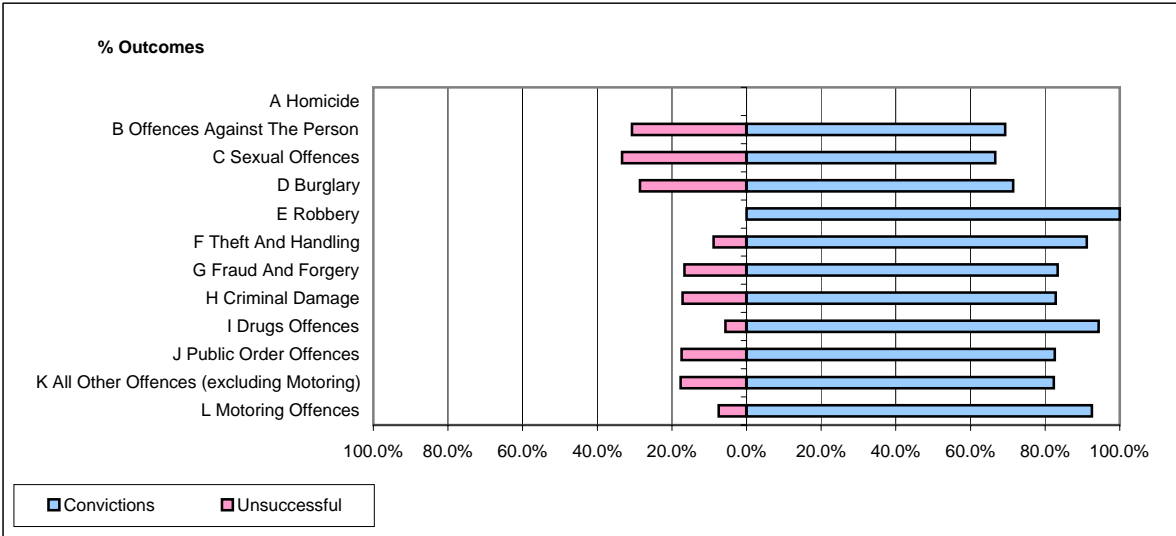


CPS OUTCOMES BY PRINCIPAL OFFENCE CATEGORY

February 2008

P18-Hertfordshire



	Convictions		Unsuccessful	
	Number of Defendants	%	Number of Defendants	%
A Homicide	0	0	0	0
B Offences Against The Person	156	69.3%	69	30.7%
C Sexual Offences	10	66.7%	5	33.3%
D Burglary	20	71.4%	8	28.6%
E Robbery	17	100.0%	0	0.0%
F Theft And Handling	165	91.2%	16	8.8%
G Fraud And Forgery	30	83.3%	6	16.7%
H Criminal Damage	53	82.8%	11	17.2%
I Drugs Offences	67	94.4%	4	5.6%
J Public Order Offences	71	82.6%	15	17.4%
K All Other Offences (excluding Motoring)	28	82.4%	6	17.6%
L Motoring Offences	720	92.5%	58	7.5%
Admin Finalisations	0	0.0%	21	100.0%
TOTAL	1,337	85.9%	219	14.1%