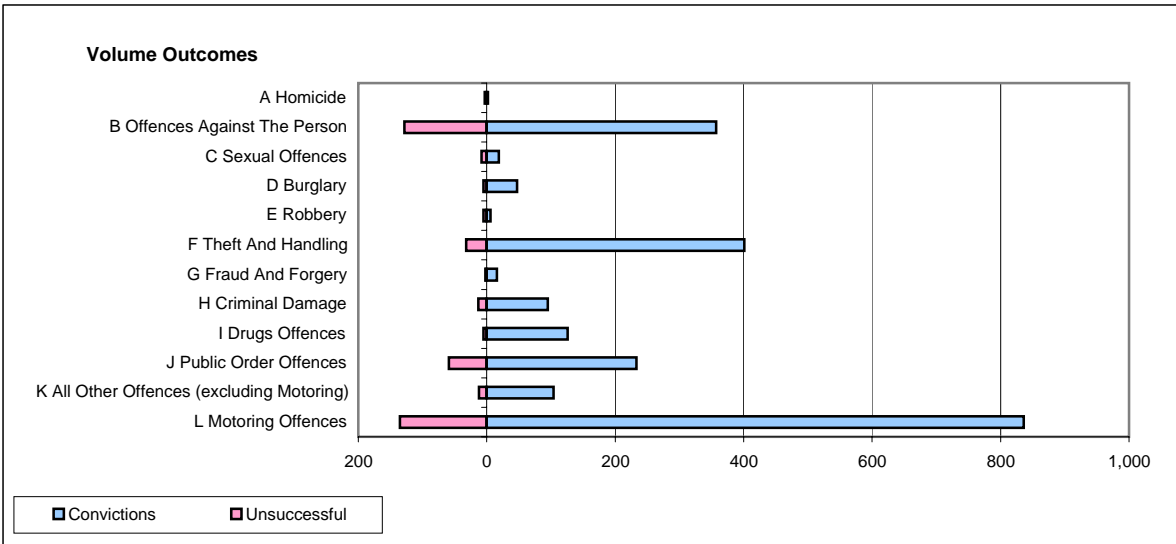
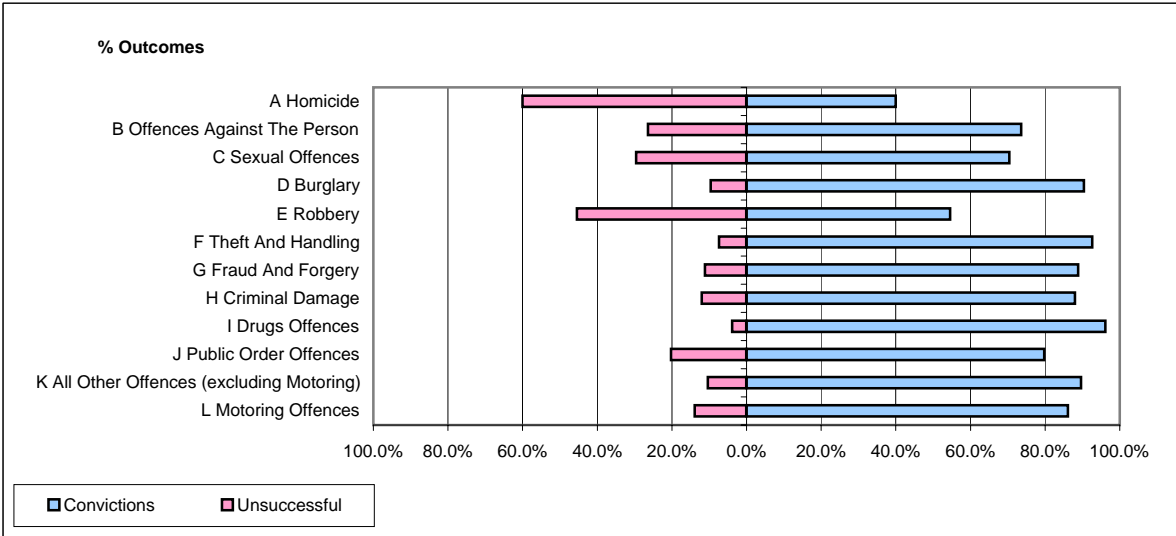


CPS OUTCOMES BY PRINCIPAL OFFENCE CATEGORY

February 2008

P17-Hampshire



	Convictions		Unsuccessful	
	Number of Defendants	%	Number of Defendants	%
A Homicide	2	40.0%	3	60.0%
B Offences Against The Person	357	73.6%	128	26.4%
C Sexual Offences	19	70.4%	8	29.6%
D Burglary	47	90.4%	5	9.6%
E Robbery	6	54.5%	5	45.5%
F Theft And Handling	401	92.6%	32	7.4%
G Fraud And Forgery	16	88.9%	2	11.1%
H Criminal Damage	95	88.0%	13	12.0%
I Drugs Offences	126	96.2%	5	3.8%
J Public Order Offences	233	79.8%	59	20.2%
K All Other Offences (excluding Motoring)	104	89.7%	12	10.3%
L Motoring Offences	836	86.1%	135	13.9%
Admin Finalisations	0	0.0%	19	100.0%
TOTAL	2,242	84.0%	426	16.0%