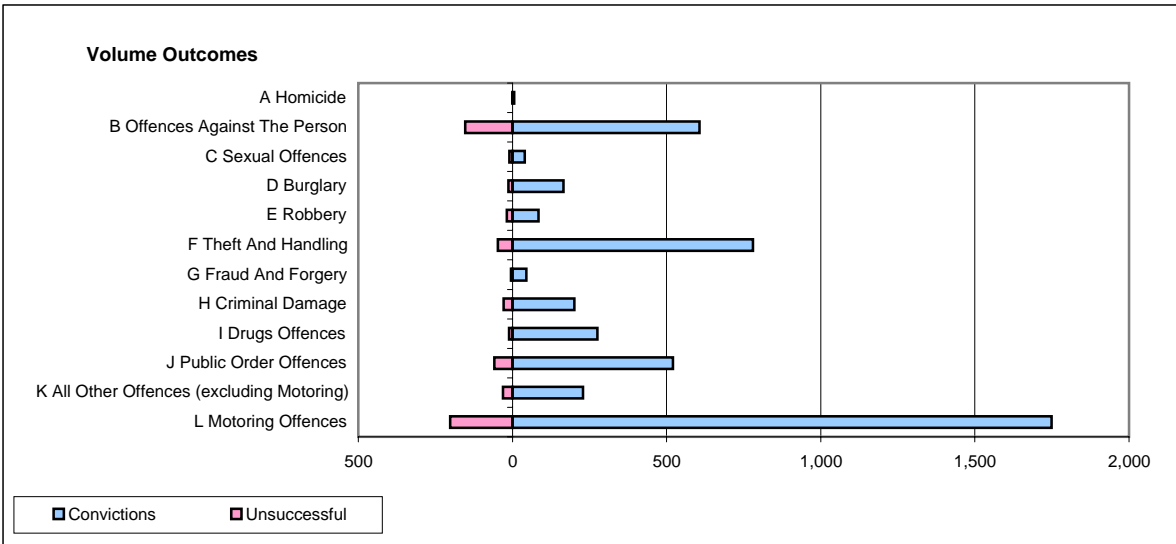
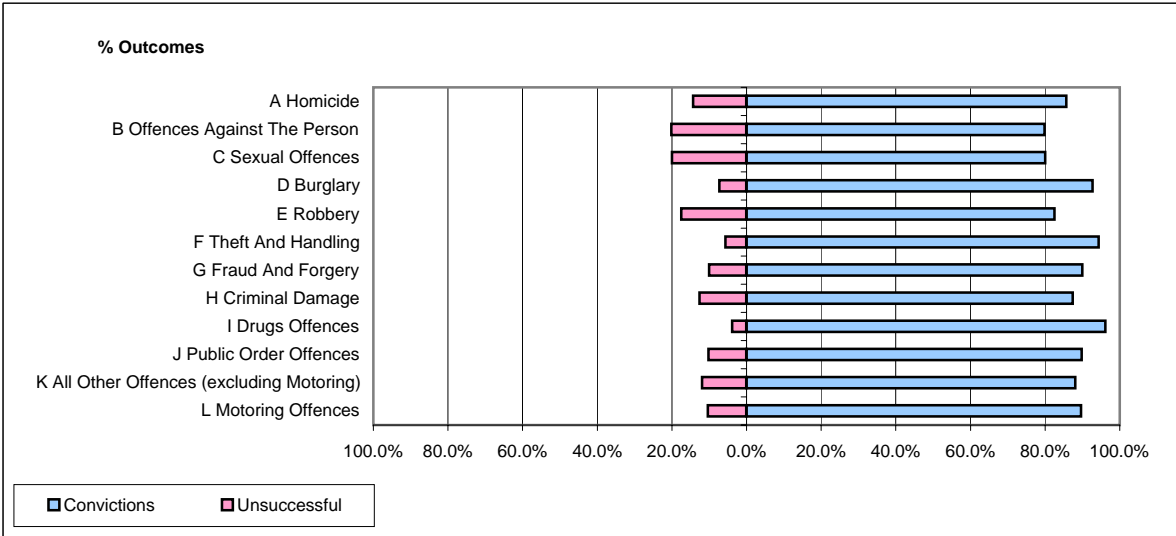


CPS OUTCOMES BY PRINCIPAL OFFENCE CATEGORY

February 2008

P15-GreaterManchester



	Convictions		Unsuccessful	
	Number of Defendants	%	Number of Defendants	%
A Homicide	6	85.7%	1	14.3%
B Offences Against The Person	607	79.9%	153	20.1%
C Sexual Offences	40	80.0%	10	20.0%
D Burglary	165	92.7%	13	7.3%
E Robbery	85	82.5%	18	17.5%
F Theft And Handling	780	94.3%	47	5.7%
G Fraud And Forgery	45	90.0%	5	10.0%
H Criminal Damage	201	87.4%	29	12.6%
I Drugs Offences	276	96.2%	11	3.8%
J Public Order Offences	521	89.8%	59	10.2%
K All Other Offences (excluding Motoring)	229	88.1%	31	11.9%
L Motoring Offences	1,749	89.6%	202	10.4%
Admin Finalisations	0	0.0%	68	100.0%
TOTAL	4,704	87.9%	647	12.1%