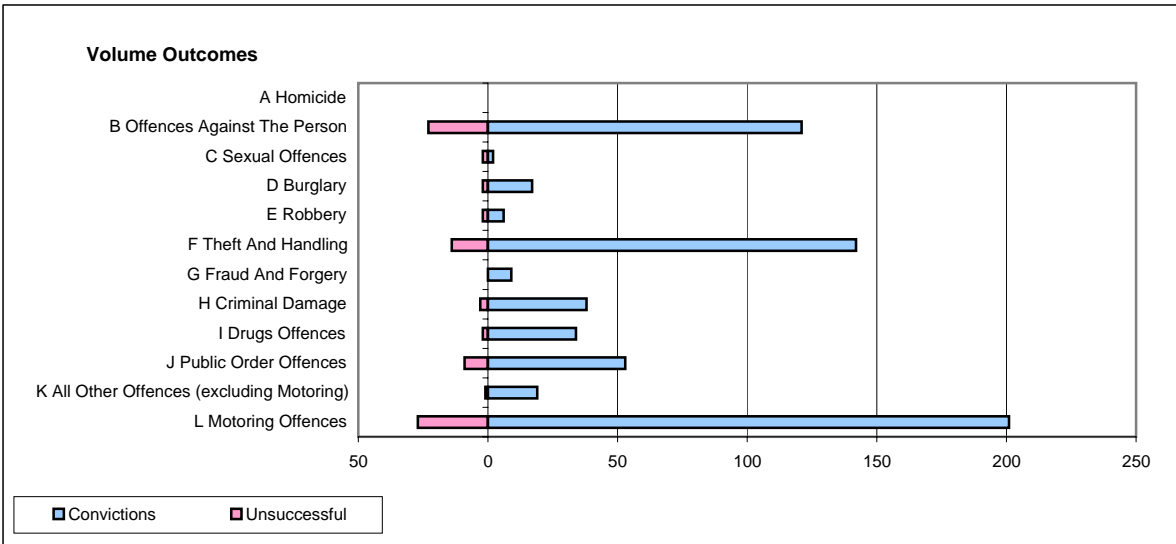
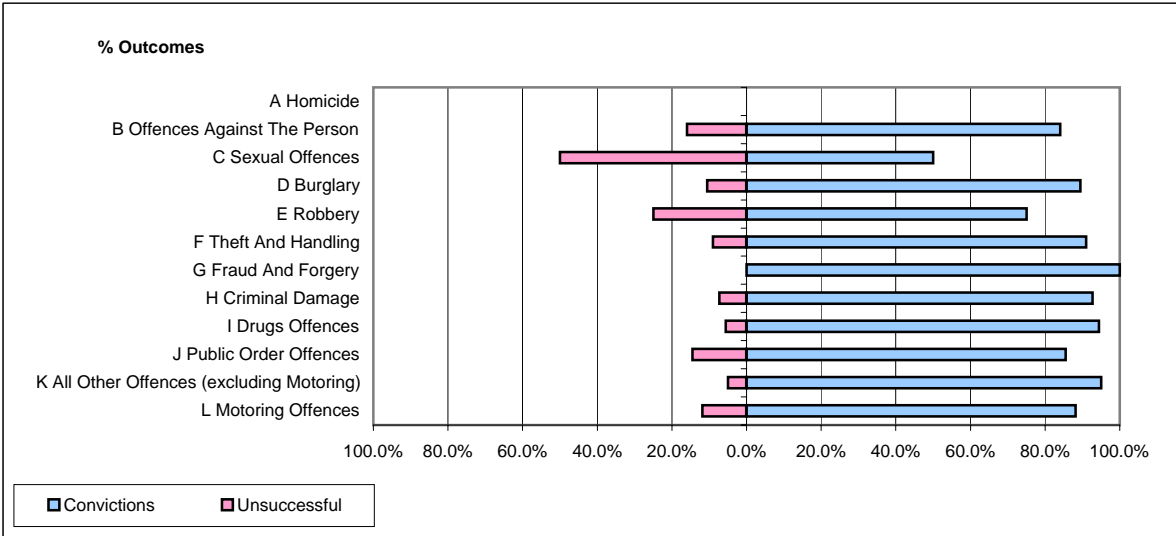


CPS OUTCOMES BY PRINCIPAL OFFENCE CATEGORY

February 2008

P14-Gloucestershire



	Convictions		Unsuccessful	
	Number of Defendants	%	Number of Defendants	%
A Homicide	0	0	0	0
B Offences Against The Person	121	84.0%	23	16.0%
C Sexual Offences	2	50.0%	2	50.0%
D Burglary	17	89.5%	2	10.5%
E Robbery	6	75.0%	2	25.0%
F Theft And Handling	142	91.0%	14	9.0%
G Fraud And Forgery	9	100.0%	0	0.0%
H Criminal Damage	38	92.7%	3	7.3%
I Drugs Offences	34	94.4%	2	5.6%
J Public Order Offences	53	85.5%	9	14.5%
K All Other Offences (excluding Motoring)	19	95.0%	1	5.0%
L Motoring Offences	201	88.2%	27	11.8%
Admin Finalisations	0	0.0%	6	100.0%
TOTAL	642	87.6%	91	12.4%