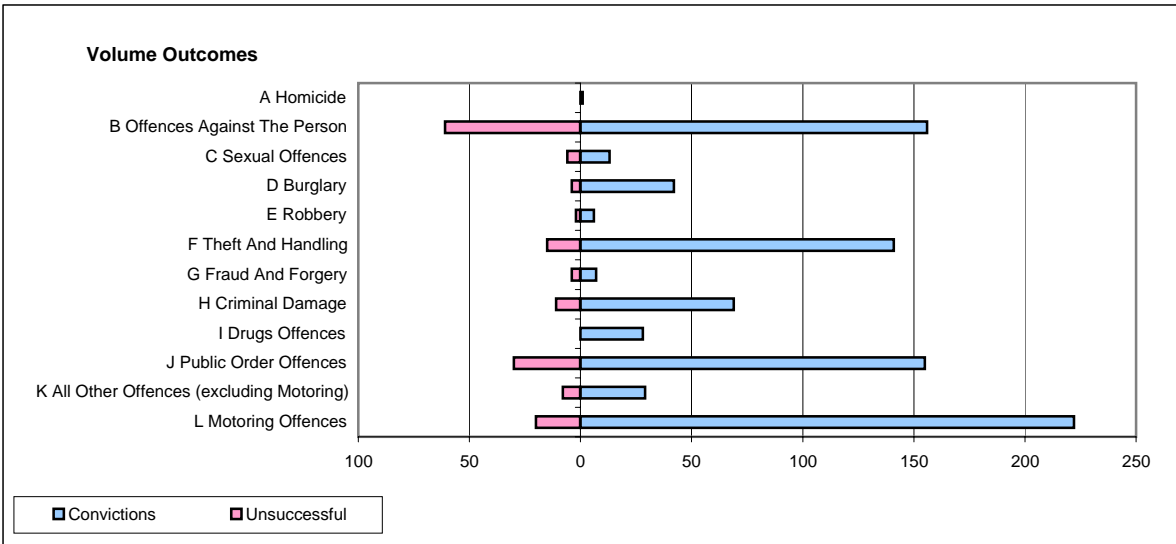
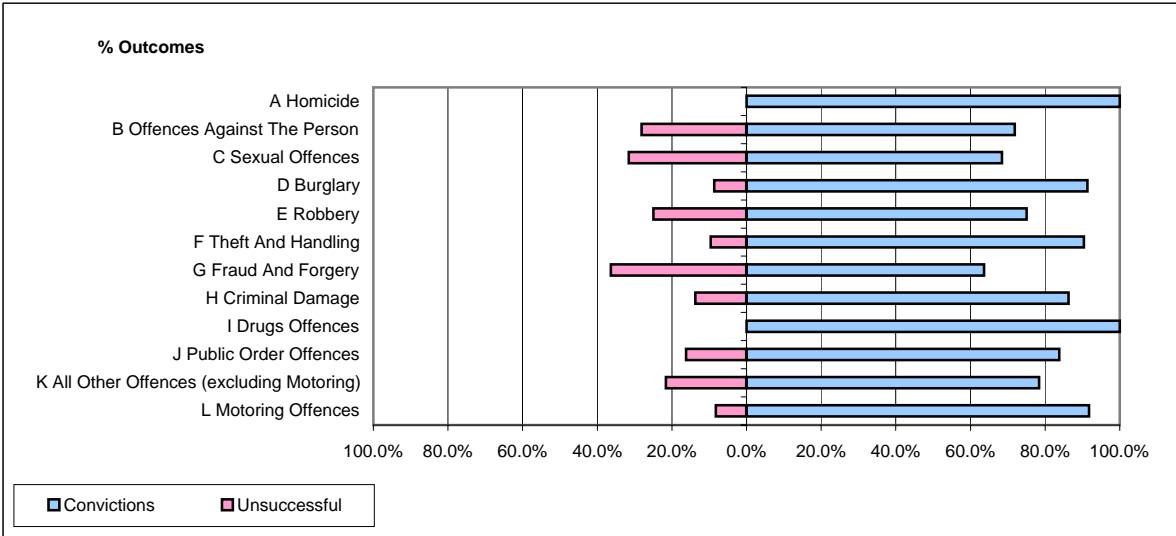


**CPS OUTCOMES BY PRINCIPAL OFFENCE CATEGORY**

**February 2008**

**P11-Durham**



	Convictions		Unsuccessful	
	Number of Defendants	%	Number of Defendants	%
<b>A Homicide</b>	1	100.0%	0	0.0%
<b>B Offences Against The Person</b>	156	71.9%	61	28.1%
<b>C Sexual Offences</b>	13	68.4%	6	31.6%
<b>D Burglary</b>	42	91.3%	4	8.7%
<b>E Robbery</b>	6	75.0%	2	25.0%
<b>F Theft And Handling</b>	141	90.4%	15	9.6%
<b>G Fraud And Forgery</b>	7	63.6%	4	36.4%
<b>H Criminal Damage</b>	69	86.3%	11	13.8%
<b>I Drugs Offences</b>	28	100.0%	0	0.0%
<b>J Public Order Offences</b>	155	83.8%	30	16.2%
<b>K All Other Offences (excluding Motoring)</b>	29	78.4%	8	21.6%
<b>L Motoring Offences</b>	222	91.7%	20	8.3%
<b>Admin Finalisations</b>	0	0.0%	10	100.0%
<b>TOTAL</b>	<b>869</b>	<b>83.6%</b>	<b>171</b>	<b>16.4%</b>