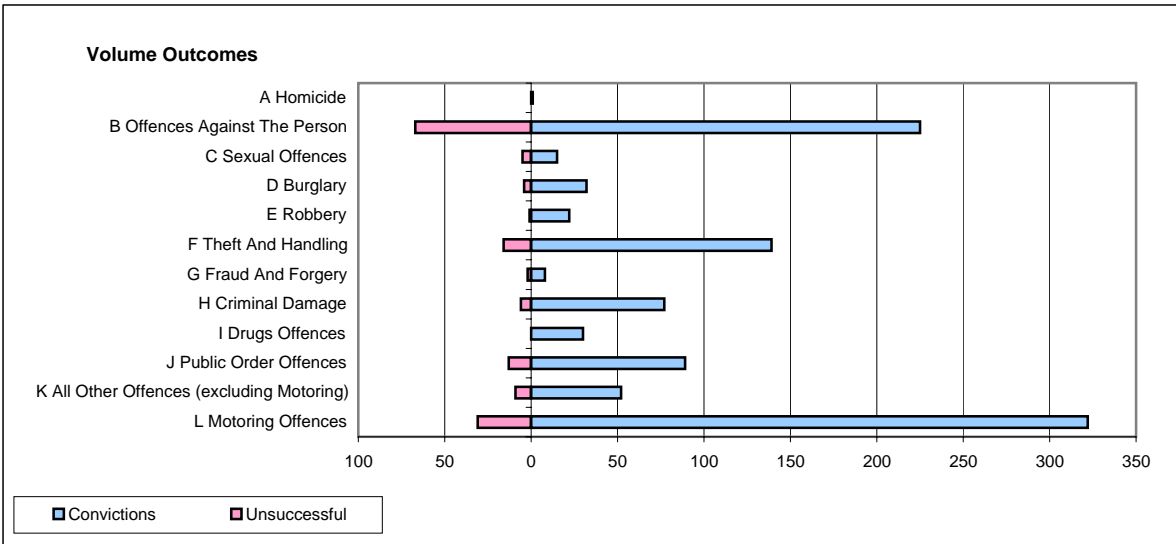
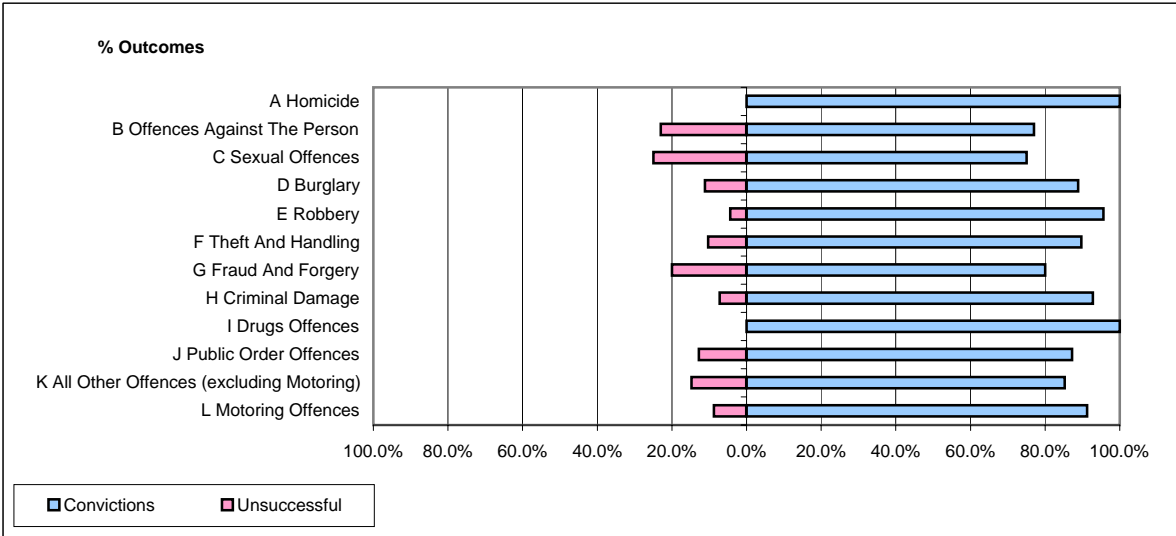


CPS OUTCOMES BY PRINCIPAL OFFENCE CATEGORY

February 2008

P08-Derbyshire



	Convictions		Unsuccessful	
	Number of Defendants	%	Number of Defendants	%
A Homicide	1	100.0%	0	0.0%
B Offences Against The Person	225	77.1%	67	22.9%
C Sexual Offences	15	75.0%	5	25.0%
D Burglary	32	88.9%	4	11.1%
E Robbery	22	95.7%	1	4.3%
F Theft And Handling	139	89.7%	16	10.3%
G Fraud And Forgery	8	80.0%	2	20.0%
H Criminal Damage	77	92.8%	6	7.2%
I Drugs Offences	30	100.0%	0	0.0%
J Public Order Offences	89	87.3%	13	12.7%
K All Other Offences (excluding Motoring)	52	85.2%	9	14.8%
L Motoring Offences	322	91.2%	31	8.8%
Admin Finalisations	0	0.0%	10	100.0%
TOTAL	1,012	86.1%	164	13.9%