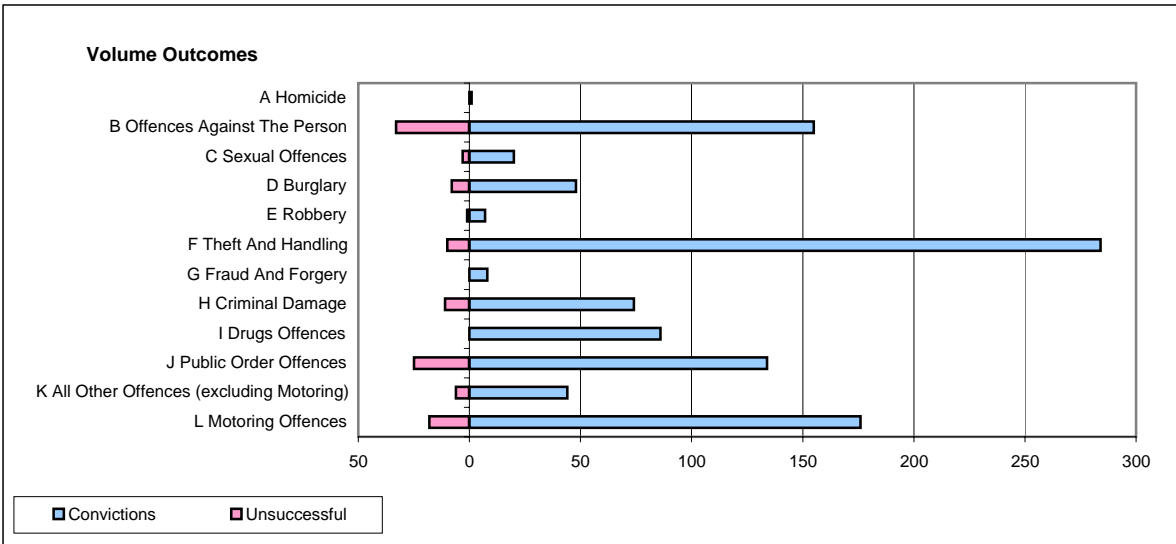
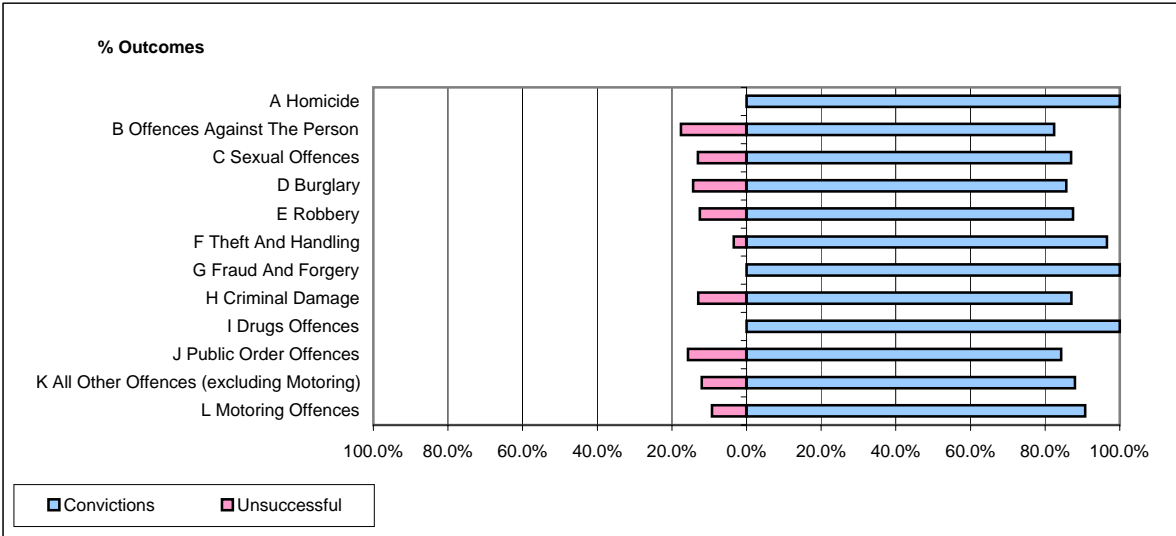


CPS OUTCOMES BY PRINCIPAL OFFENCE CATEGORY

February 2008

P06-Cleveland



	Convictions		Unsuccessful	
	Number of Defendants	%	Number of Defendants	%
A Homicide	1	100.0%	0	0.0%
B Offences Against The Person	155	82.4%	33	17.6%
C Sexual Offences	20	87.0%	3	13.0%
D Burglary	48	85.7%	8	14.3%
E Robbery	7	87.5%	1	12.5%
F Theft And Handling	284	96.6%	10	3.4%
G Fraud And Forgery	8	100.0%	0	0.0%
H Criminal Damage	74	87.1%	11	12.9%
I Drugs Offences	86	100.0%	0	0.0%
J Public Order Offences	134	84.3%	25	15.7%
K All Other Offences (excluding Motoring)	44	88.0%	6	12.0%
L Motoring Offences	176	90.7%	18	9.3%
Admin Finalisations	0	0.0%	11	100.0%
TOTAL	1,037	89.2%	126	10.8%