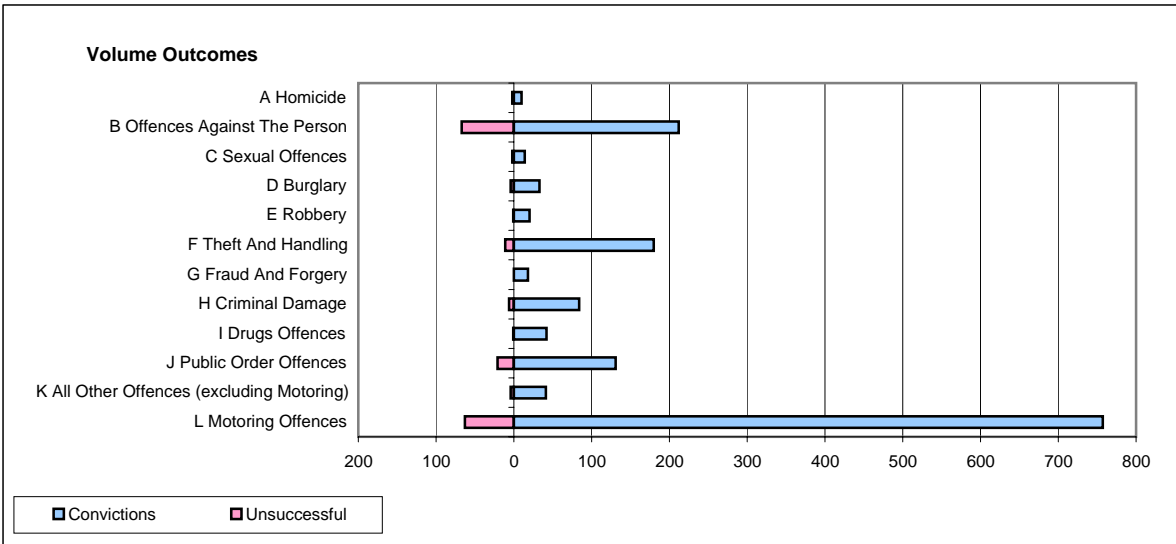
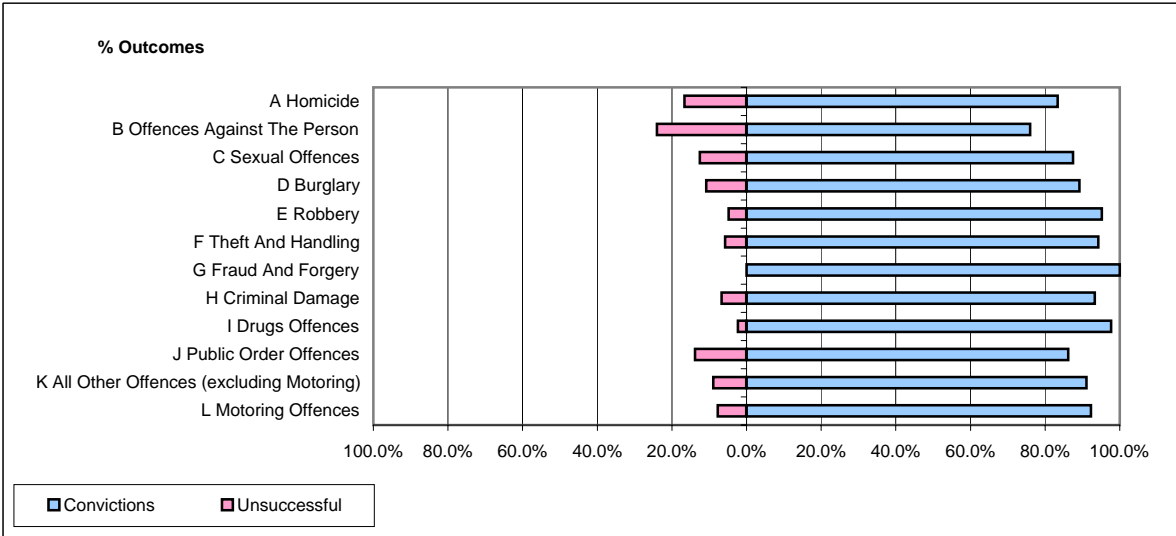


CPS OUTCOMES BY PRINCIPAL OFFENCE CATEGORY

February 2008

P04-Cheshire



	Convictions		Unsuccessful	
	Number of Defendants	%	Number of Defendants	%
A Homicide	10	83.3%	2	16.7%
B Offences Against The Person	212	76.0%	67	24.0%
C Sexual Offences	14	87.5%	2	12.5%
D Burglary	33	89.2%	4	10.8%
E Robbery	20	95.2%	1	4.8%
F Theft And Handling	180	94.2%	11	5.8%
G Fraud And Forgery	18	100.0%	0	0.0%
H Criminal Damage	84	93.3%	6	6.7%
I Drugs Offences	42	97.7%	1	2.3%
J Public Order Offences	131	86.2%	21	13.8%
K All Other Offences (excluding Motoring)	41	91.1%	4	8.9%
L Motoring Offences	757	92.3%	63	7.7%
Admin Finalisations	0	0.0%	14	100.0%
TOTAL	1,542	88.7%	196	11.3%