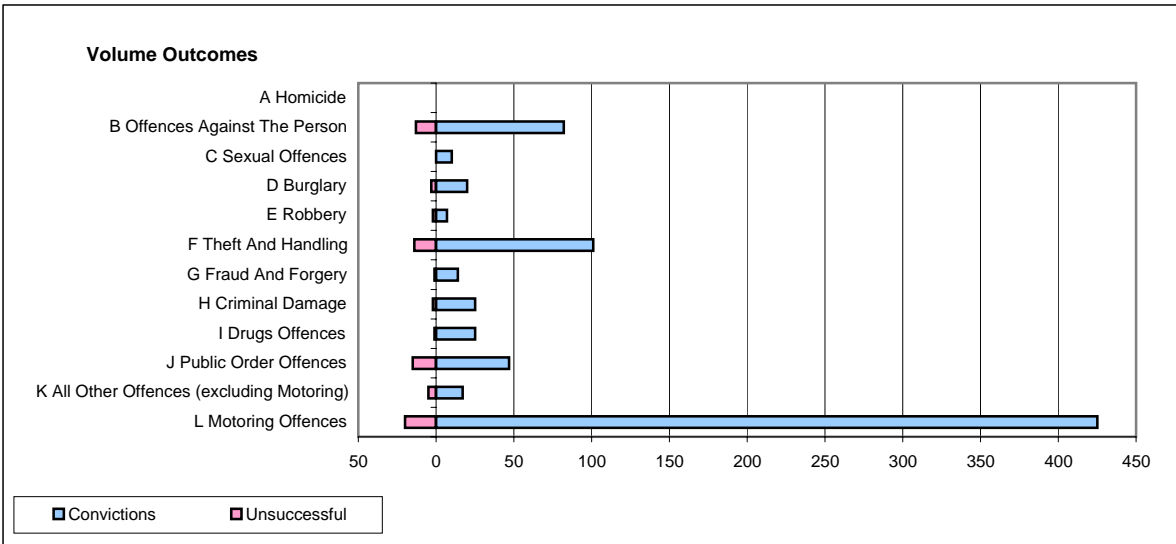
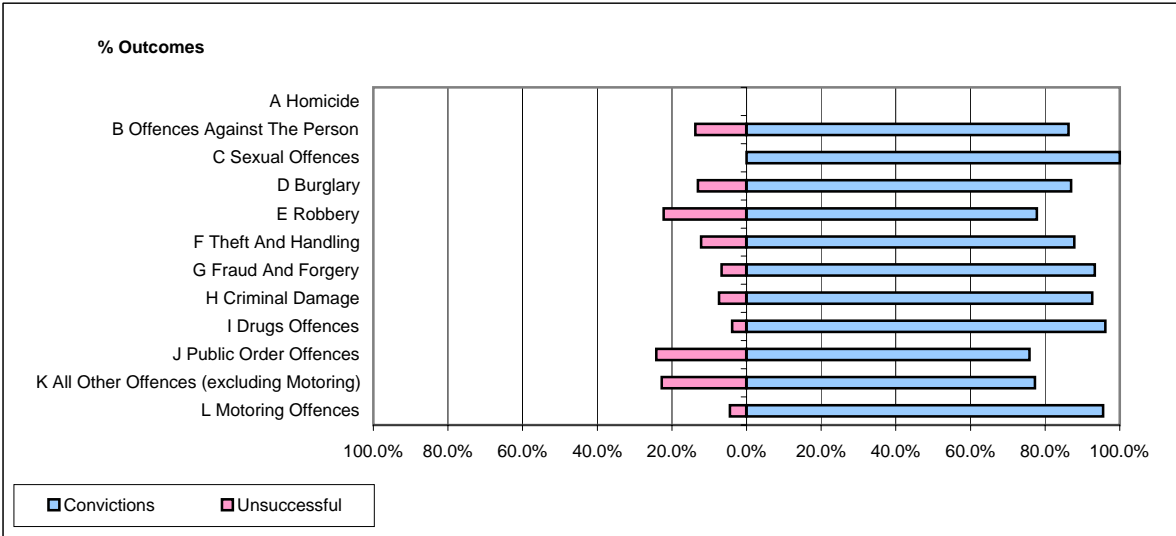


**CPS OUTCOMES BY PRINCIPAL OFFENCE CATEGORY**

**February 2008**

**P02-Bedfordshire**



	Convictions		Unsuccessful	
	Number of Defendants	%	Number of Defendants	%
<b>A Homicide</b>	<b>0</b>	<b>0</b>	<b>0</b>	<b>0</b>
<b>B Offences Against The Person</b>	<b>82</b>	<b>86.3%</b>	<b>13</b>	<b>13.7%</b>
<b>C Sexual Offences</b>	<b>10</b>	<b>100.0%</b>	<b>0</b>	<b>0.0%</b>
<b>D Burglary</b>	<b>20</b>	<b>87.0%</b>	<b>3</b>	<b>13.0%</b>
<b>E Robbery</b>	<b>7</b>	<b>77.8%</b>	<b>2</b>	<b>22.2%</b>
<b>F Theft And Handling</b>	<b>101</b>	<b>87.8%</b>	<b>14</b>	<b>12.2%</b>
<b>G Fraud And Forgery</b>	<b>14</b>	<b>93.3%</b>	<b>1</b>	<b>6.7%</b>
<b>H Criminal Damage</b>	<b>25</b>	<b>92.6%</b>	<b>2</b>	<b>7.4%</b>
<b>I Drugs Offences</b>	<b>25</b>	<b>96.2%</b>	<b>1</b>	<b>3.8%</b>
<b>J Public Order Offences</b>	<b>47</b>	<b>75.8%</b>	<b>15</b>	<b>24.2%</b>
<b>K All Other Offences (excluding Motoring)</b>	<b>17</b>	<b>77.3%</b>	<b>5</b>	<b>22.7%</b>
<b>L Motoring Offences</b>	<b>425</b>	<b>95.5%</b>	<b>20</b>	<b>4.5%</b>
<b>Admin Finalisations</b>	<b>0</b>	<b>0.0%</b>	<b>16</b>	<b>100.0%</b>
<b>TOTAL</b>	<b>773</b>	<b>89.4%</b>	<b>92</b>	<b>10.6%</b>