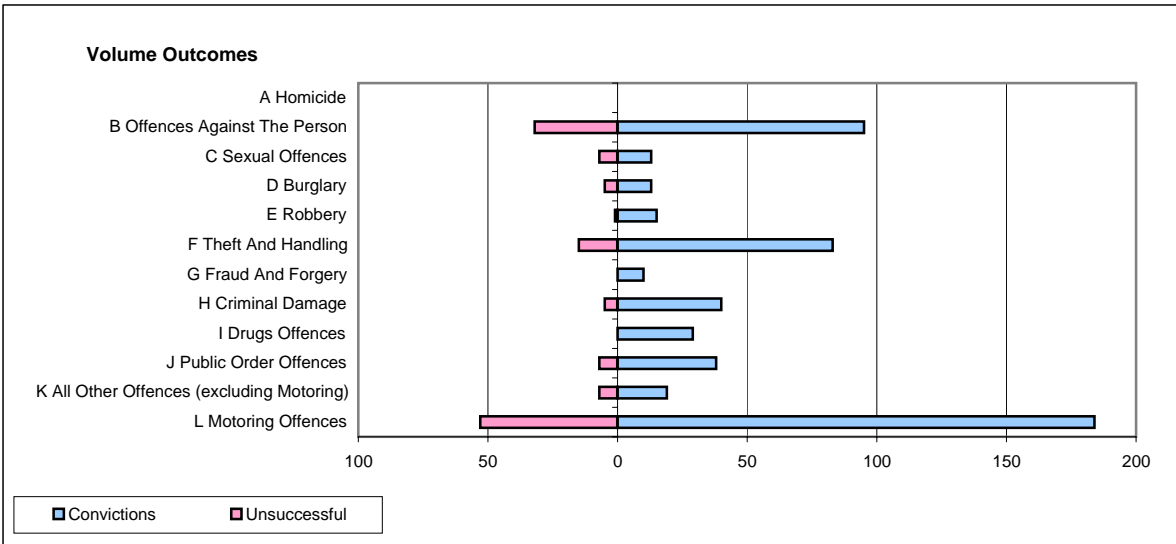
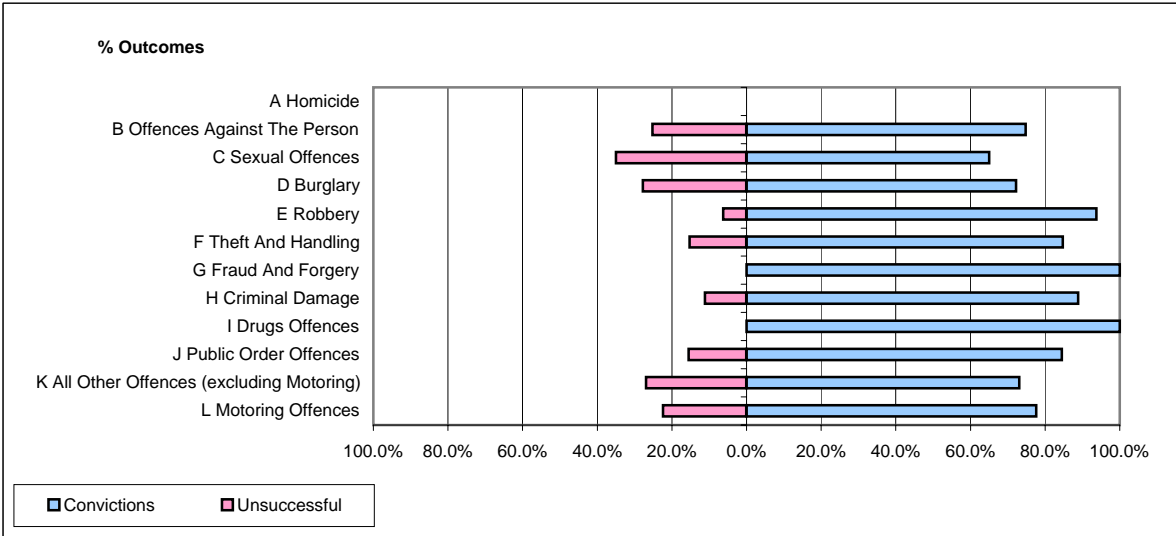


CPS OUTCOMES BY PRINCIPAL OFFENCE CATEGORY

January 2008

P43-Wiltshire



	Convictions		Unsuccessful	
	Number of Defendants	%	Number of Defendants	%
A Homicide	0	0	0	0
B Offences Against The Person	95	74.8%	32	25.2%
C Sexual Offences	13	65.0%	7	35.0%
D Burglary	13	72.2%	5	27.8%
E Robbery	15	93.8%	1	6.3%
F Theft And Handling	83	84.7%	15	15.3%
G Fraud And Forgery	10	100.0%	0	0.0%
H Criminal Damage	40	88.9%	5	11.1%
I Drugs Offences	29	100.0%	0	0.0%
J Public Order Offences	38	84.4%	7	15.6%
K All Other Offences (excluding Motoring)	19	73.1%	7	26.9%
L Motoring Offences	184	77.6%	53	22.4%
Admin Finalisations	0	0.0%	32	100.0%
TOTAL	539	76.7%	164	23.3%