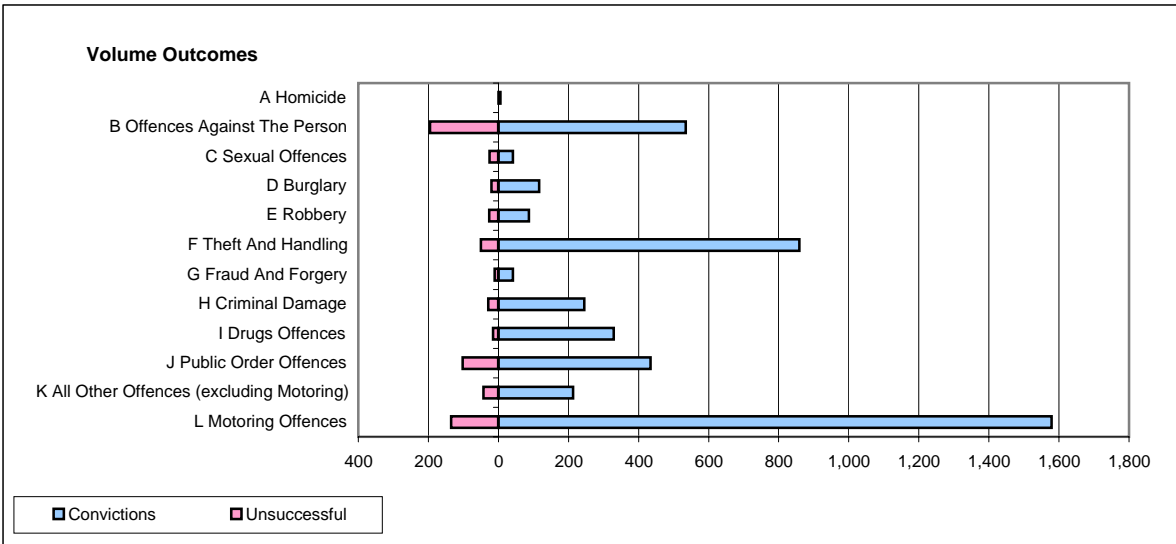
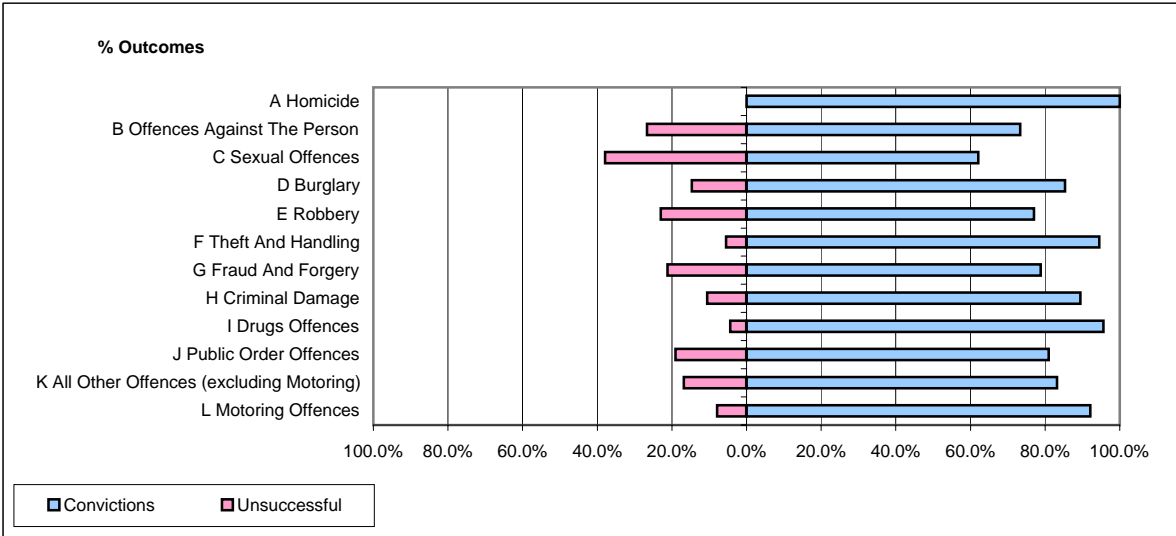


CPS OUTCOMES BY PRINCIPAL OFFENCE CATEGORY

January 2008

P41-WestMidlands



	Convictions		Unsuccessful	
	Number of Defendants	%	Number of Defendants	%
A Homicide	6	100.0%	0	0.0%
B Offences Against The Person	535	73.3%	195	26.7%
C Sexual Offences	41	62.1%	25	37.9%
D Burglary	116	85.3%	20	14.7%
E Robbery	87	77.0%	26	23.0%
F Theft And Handling	859	94.5%	50	5.5%
G Fraud And Forgery	41	78.8%	11	21.2%
H Criminal Damage	245	89.4%	29	10.6%
I Drugs Offences	329	95.6%	15	4.4%
J Public Order Offences	434	81.0%	102	19.0%
K All Other Offences (excluding Motoring)	213	83.2%	43	16.8%
L Motoring Offences	1,579	92.1%	135	7.9%
Admin Finalisations	0	0.0%	72	100.0%
TOTAL	4,485	86.1%	723	13.9%