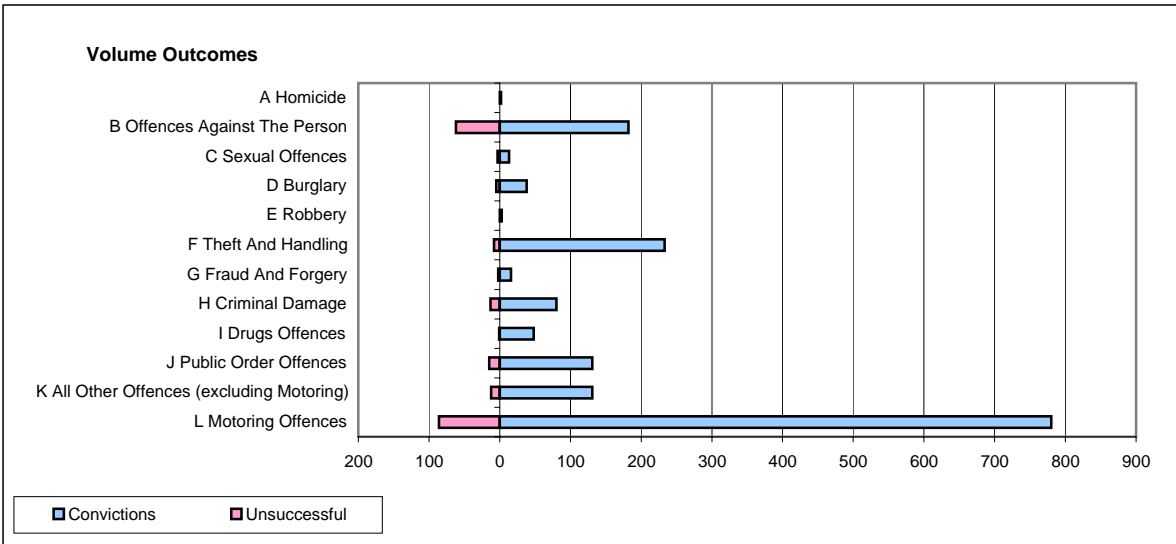
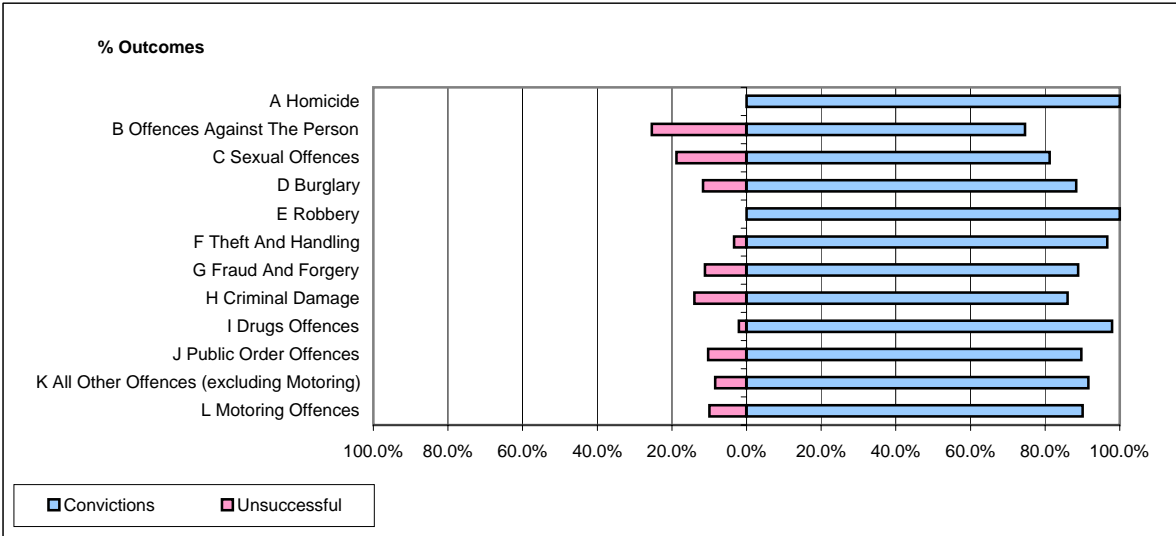


CPS OUTCOMES BY PRINCIPAL OFFENCE CATEGORY

January 2008

P40-WestMercia



	Convictions		Unsuccessful	
	Number of Defendants	%	Number of Defendants	%
A Homicide	2	100.0%	0	0.0%
B Offences Against The Person	182	74.6%	62	25.4%
C Sexual Offences	13	81.3%	3	18.8%
D Burglary	38	88.4%	5	11.6%
E Robbery	3	100.0%	0	0.0%
F Theft And Handling	233	96.7%	8	3.3%
G Fraud And Forgery	16	88.9%	2	11.1%
H Criminal Damage	80	86.0%	13	14.0%
I Drugs Offences	48	98.0%	1	2.0%
J Public Order Offences	131	89.7%	15	10.3%
K All Other Offences (excluding Motoring)	131	91.6%	12	8.4%
L Motoring Offences	780	90.1%	86	9.9%
Admin Finalisations	0	0.0%	24	100.0%
TOTAL	1,657	87.8%	231	12.2%