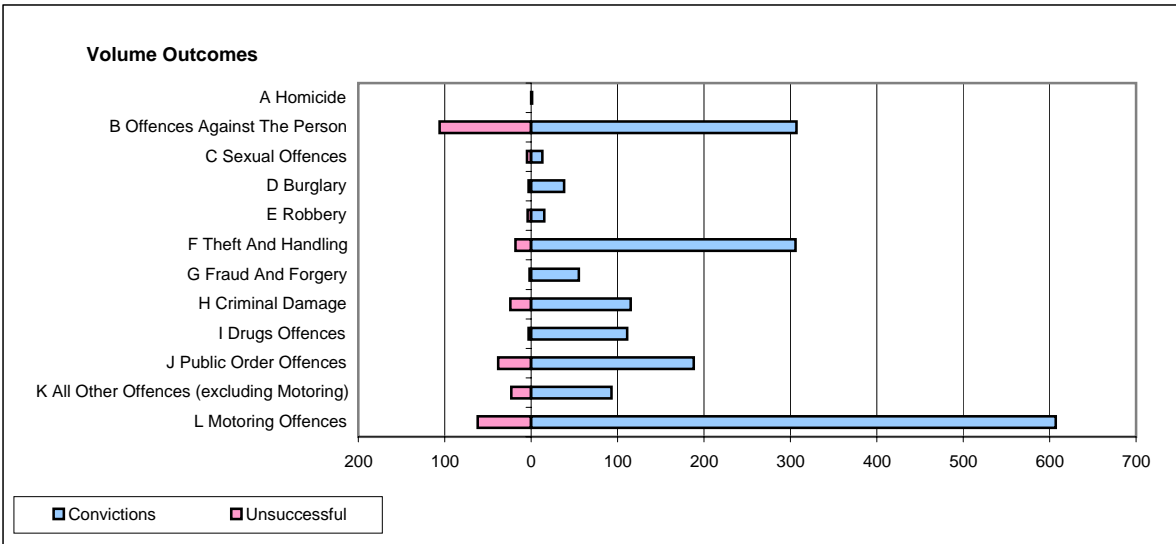
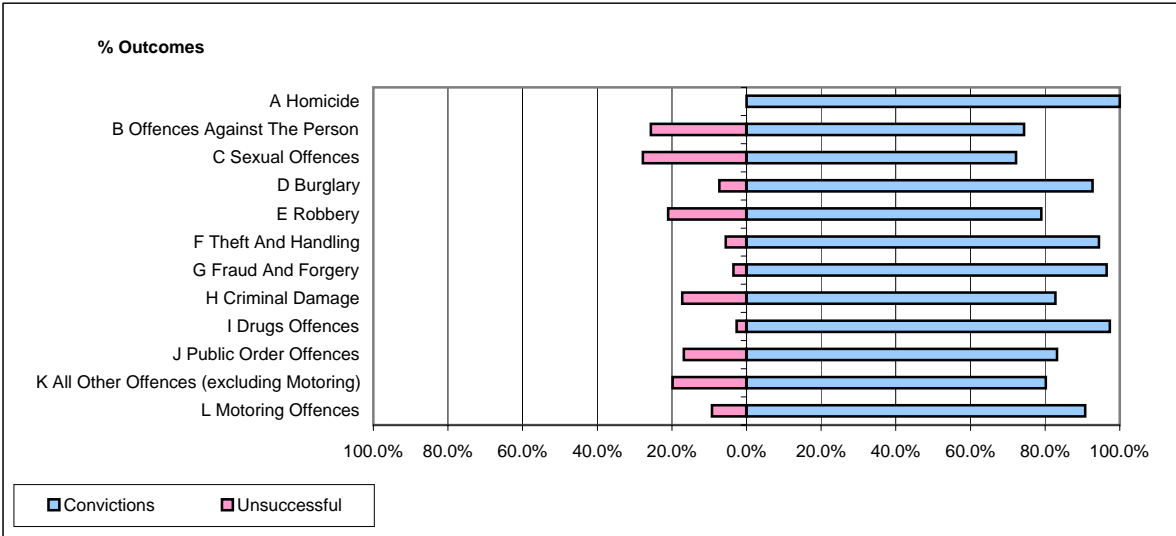


CPS OUTCOMES BY PRINCIPAL OFFENCE CATEGORY

January 2008

P37-Sussex



	Convictions		Unsuccessful	
	Number of Defendants	%	Number of Defendants	%
A Homicide	1	100.0%	0	0.0%
B Offences Against The Person	307	74.3%	106	25.7%
C Sexual Offences	13	72.2%	5	27.8%
D Burglary	38	92.7%	3	7.3%
E Robbery	15	78.9%	4	21.1%
F Theft And Handling	306	94.4%	18	5.6%
G Fraud And Forgery	55	96.5%	2	3.5%
H Criminal Damage	115	82.7%	24	17.3%
I Drugs Offences	111	97.4%	3	2.6%
J Public Order Offences	188	83.2%	38	16.8%
K All Other Offences (excluding Motoring)	93	80.2%	23	19.8%
L Motoring Offences	607	90.7%	62	9.3%
Admin Finalisations	0	0.0%	31	100.0%
TOTAL	1,849	85.3%	319	14.7%