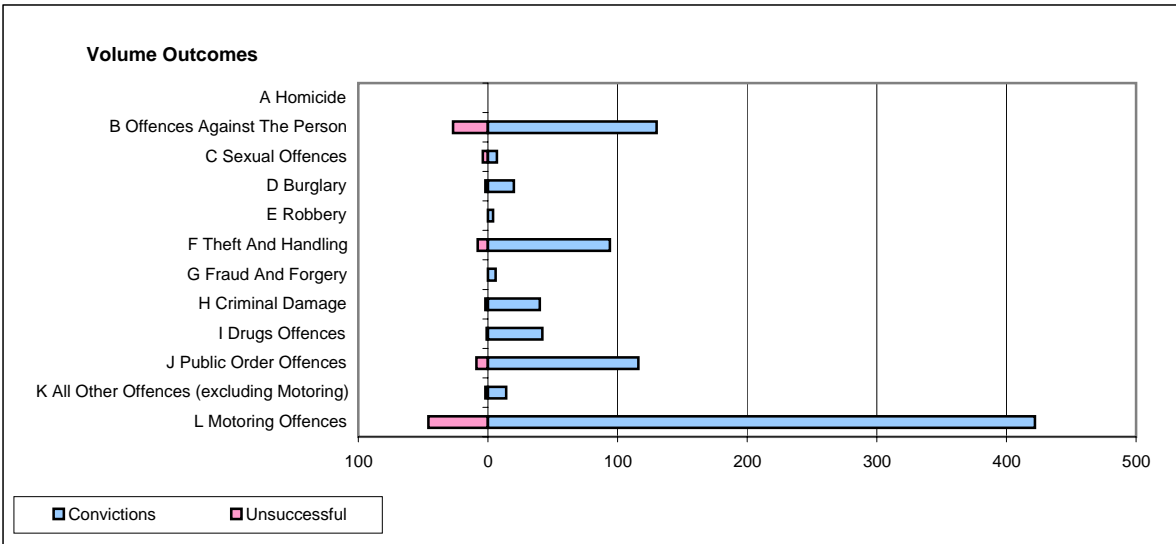
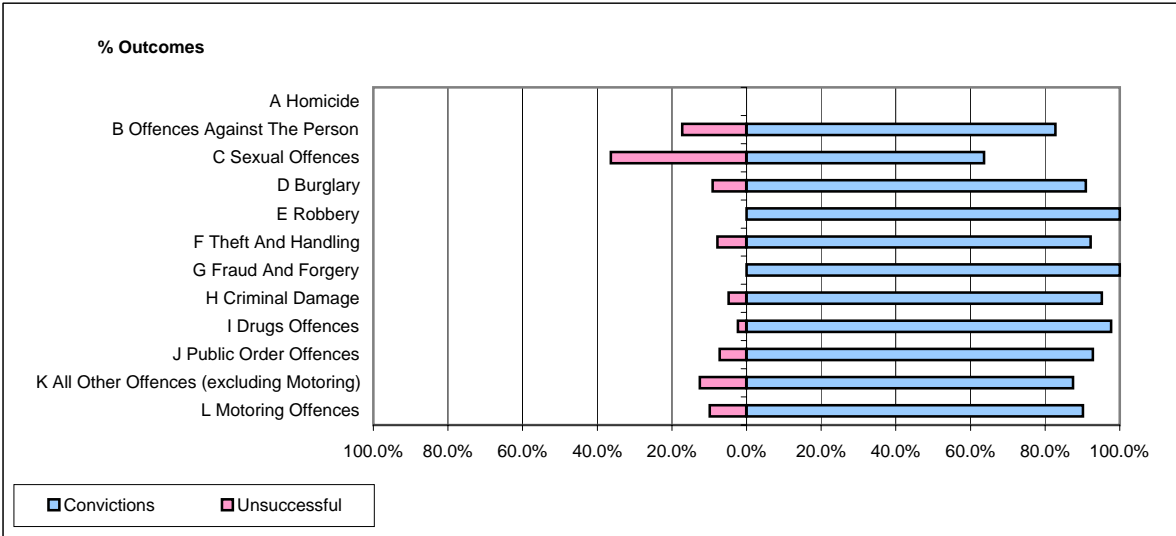


CPS OUTCOMES BY PRINCIPAL OFFENCE CATEGORY

January 2008

P35-Suffolk



	Convictions		Unsuccessful	
	Number of Defendants	%	Number of Defendants	%
A Homicide	0	0	0	0
B Offences Against The Person	130	82.8%	27	17.2%
C Sexual Offences	7	63.6%	4	36.4%
D Burglary	20	90.9%	2	9.1%
E Robbery	4	100.0%	0	0.0%
F Theft And Handling	94	92.2%	8	7.8%
G Fraud And Forgery	6	100.0%	0	0.0%
H Criminal Damage	40	95.2%	2	4.8%
I Drugs Offences	42	97.7%	1	2.3%
J Public Order Offences	116	92.8%	9	7.2%
K All Other Offences (excluding Motoring)	14	87.5%	2	12.5%
L Motoring Offences	422	90.2%	46	9.8%
Admin Finalisations	0	0.0%	12	100.0%
TOTAL	895	88.8%	113	11.2%