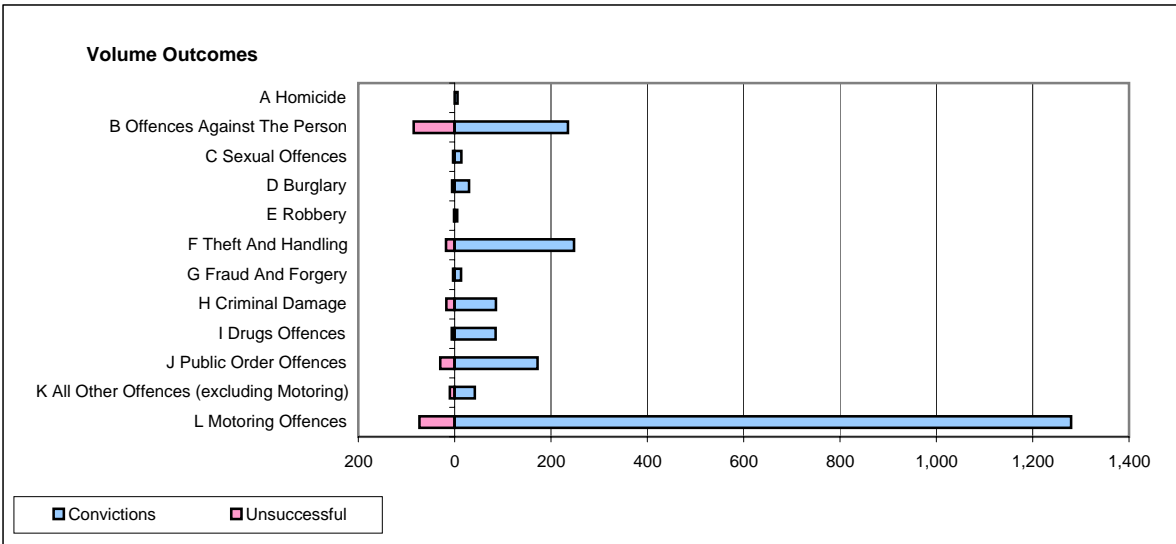
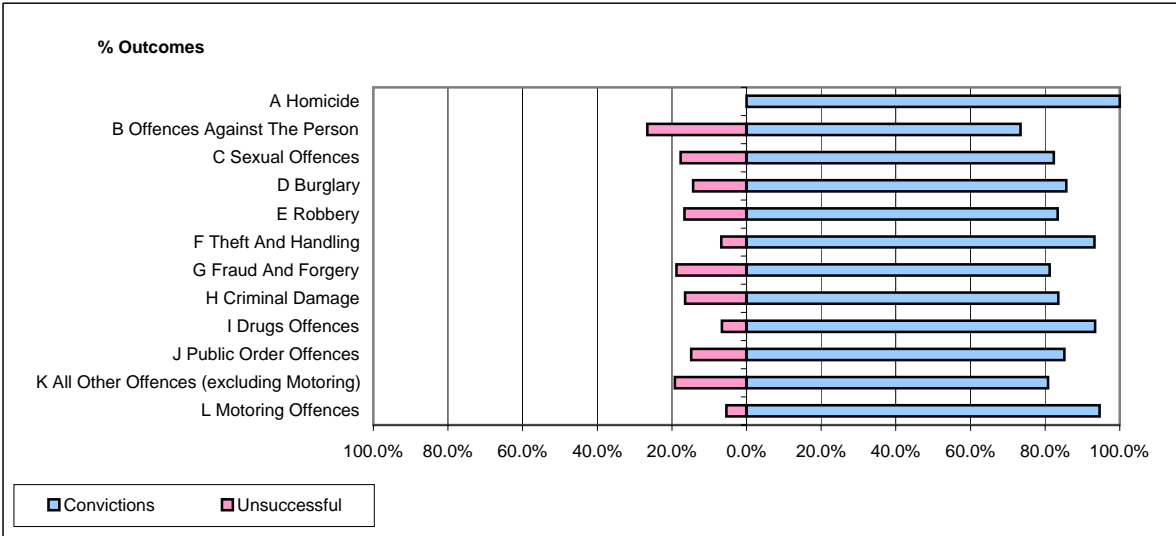


CPS OUTCOMES BY PRINCIPAL OFFENCE CATEGORY

January 2008

P34-Staffordshire



	Convictions		Unsuccessful	
	Number of Defendants	%	Number of Defendants	%
A Homicide	6	100.0%	0	0.0%
B Offences Against The Person	235	73.4%	85	26.6%
C Sexual Offences	14	82.4%	3	17.6%
D Burglary	30	85.7%	5	14.3%
E Robbery	5	83.3%	1	16.7%
F Theft And Handling	248	93.2%	18	6.8%
G Fraud And Forgery	13	81.3%	3	18.8%
H Criminal Damage	86	83.5%	17	16.5%
I Drugs Offences	85	93.4%	6	6.6%
J Public Order Offences	172	85.1%	30	14.9%
K All Other Offences (excluding Motoring)	42	80.8%	10	19.2%
L Motoring Offences	1,280	94.6%	73	5.4%
Admin Finalisations	0	0.0%	29	100.0%
TOTAL	2,216	88.8%	280	11.2%