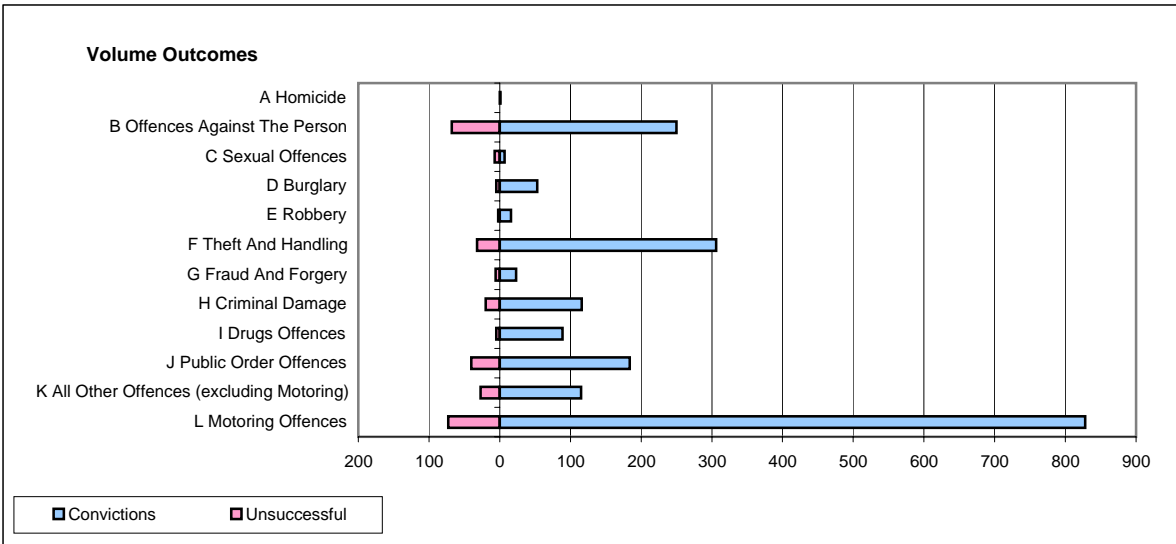
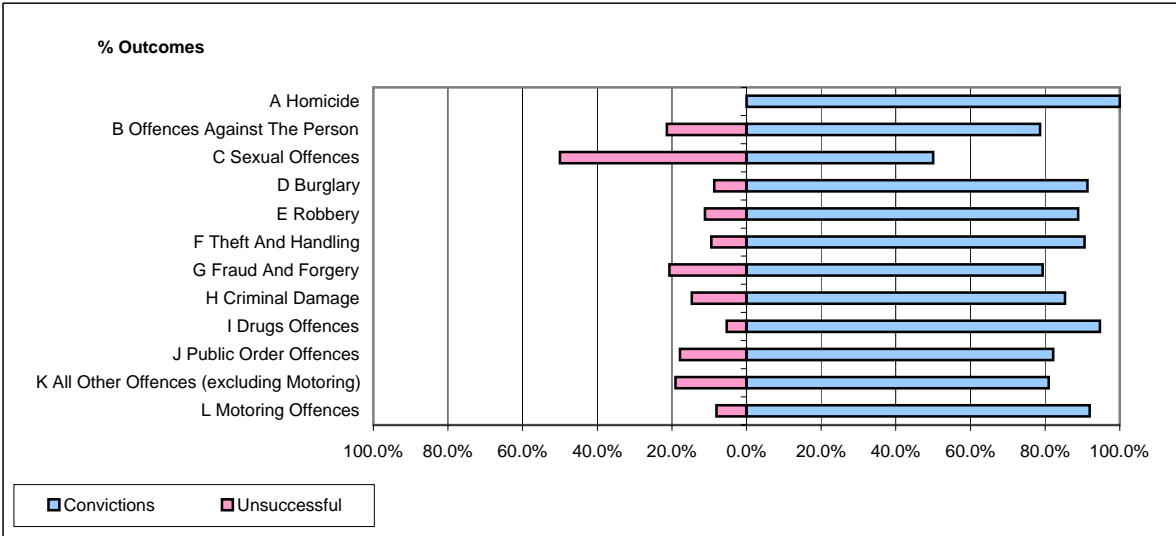


**CPS OUTCOMES BY PRINCIPAL OFFENCE CATEGORY**

January 2008

**P33-SouthYorkshire**



	Convictions		Unsuccessful	
	Number of Defendants	%	Number of Defendants	%
<b>A Homicide</b>	<b>1</b>	<b>100.0%</b>	<b>0</b>	<b>0.0%</b>
<b>B Offences Against The Person</b>	<b>250</b>	<b>78.6%</b>	<b>68</b>	<b>21.4%</b>
<b>C Sexual Offences</b>	<b>7</b>	<b>50.0%</b>	<b>7</b>	<b>50.0%</b>
<b>D Burglary</b>	<b>53</b>	<b>91.4%</b>	<b>5</b>	<b>8.6%</b>
<b>E Robbery</b>	<b>16</b>	<b>88.9%</b>	<b>2</b>	<b>11.1%</b>
<b>F Theft And Handling</b>	<b>306</b>	<b>90.5%</b>	<b>32</b>	<b>9.5%</b>
<b>G Fraud And Forgery</b>	<b>23</b>	<b>79.3%</b>	<b>6</b>	<b>20.7%</b>
<b>H Criminal Damage</b>	<b>116</b>	<b>85.3%</b>	<b>20</b>	<b>14.7%</b>
<b>I Drugs Offences</b>	<b>89</b>	<b>94.7%</b>	<b>5</b>	<b>5.3%</b>
<b>J Public Order Offences</b>	<b>184</b>	<b>82.1%</b>	<b>40</b>	<b>17.9%</b>
<b>K All Other Offences (excluding Motoring)</b>	<b>115</b>	<b>81.0%</b>	<b>27</b>	<b>19.0%</b>
<b>L Motoring Offences</b>	<b>828</b>	<b>91.9%</b>	<b>73</b>	<b>8.1%</b>
<b>Admin Finalisations</b>	<b>0</b>	<b>0.0%</b>	<b>26</b>	<b>100.0%</b>
<b>TOTAL</b>	<b>1,988</b>	<b>86.5%</b>	<b>311</b>	<b>13.5%</b>