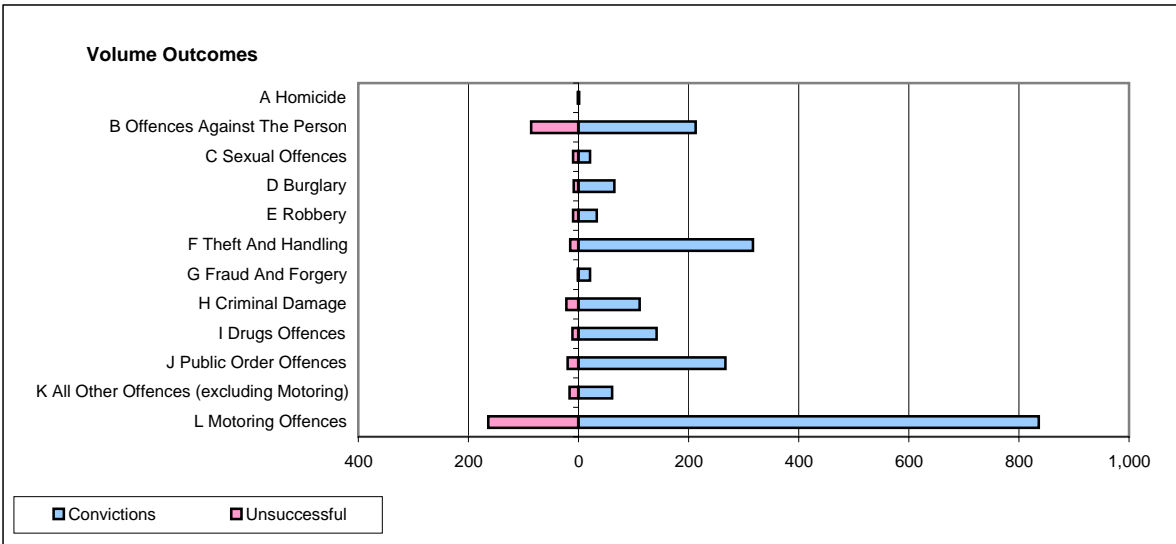
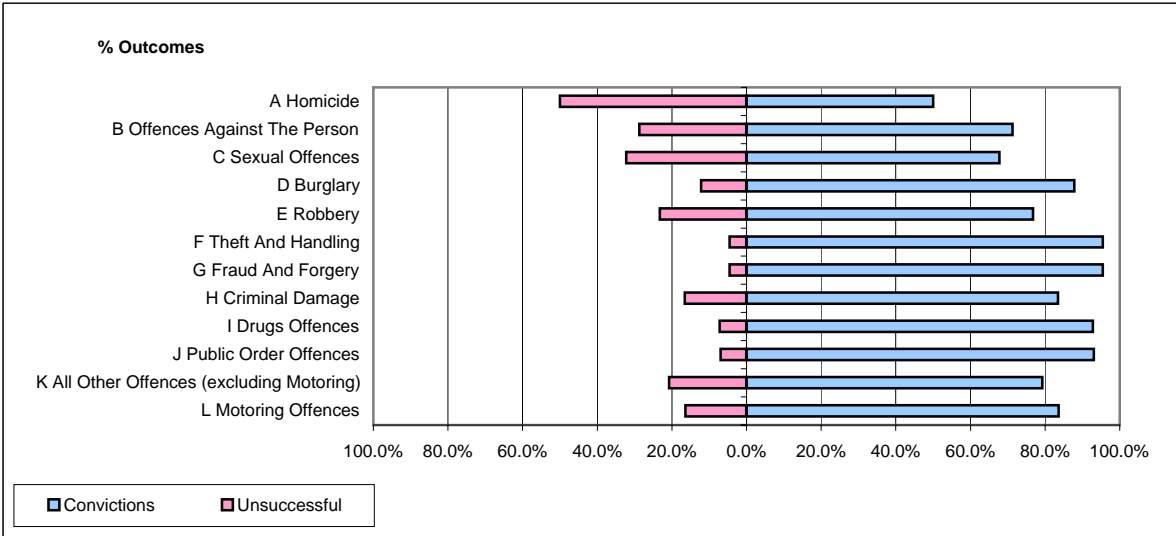


**CPS OUTCOMES BY PRINCIPAL OFFENCE CATEGORY**

January 2008

**P32-SouthWales**



	Convictions		Unsuccessful	
	Number of Defendants	%	Number of Defendants	%
<b>A Homicide</b>	<b>1</b>	<b>50.0%</b>	<b>1</b>	<b>50.0%</b>
<b>B Offences Against The Person</b>	<b>213</b>	<b>71.2%</b>	<b>86</b>	<b>28.8%</b>
<b>C Sexual Offences</b>	<b>21</b>	<b>67.7%</b>	<b>10</b>	<b>32.3%</b>
<b>D Burglary</b>	<b>65</b>	<b>87.8%</b>	<b>9</b>	<b>12.2%</b>
<b>E Robbery</b>	<b>33</b>	<b>76.7%</b>	<b>10</b>	<b>23.3%</b>
<b>F Theft And Handling</b>	<b>317</b>	<b>95.5%</b>	<b>15</b>	<b>4.5%</b>
<b>G Fraud And Forgery</b>	<b>21</b>	<b>95.5%</b>	<b>1</b>	<b>4.5%</b>
<b>H Criminal Damage</b>	<b>111</b>	<b>83.5%</b>	<b>22</b>	<b>16.5%</b>
<b>I Drugs Offences</b>	<b>142</b>	<b>92.8%</b>	<b>11</b>	<b>7.2%</b>
<b>J Public Order Offences</b>	<b>267</b>	<b>93.0%</b>	<b>20</b>	<b>7.0%</b>
<b>K All Other Offences (excluding Motoring)</b>	<b>61</b>	<b>79.2%</b>	<b>16</b>	<b>20.8%</b>
<b>L Motoring Offences</b>	<b>836</b>	<b>83.6%</b>	<b>164</b>	<b>16.4%</b>
<b>Admin Finalisations</b>	<b>0</b>	<b>0.0%</b>	<b>66</b>	<b>100.0%</b>
<b>TOTAL</b>	<b>2,088</b>	<b>82.9%</b>	<b>431</b>	<b>17.1%</b>