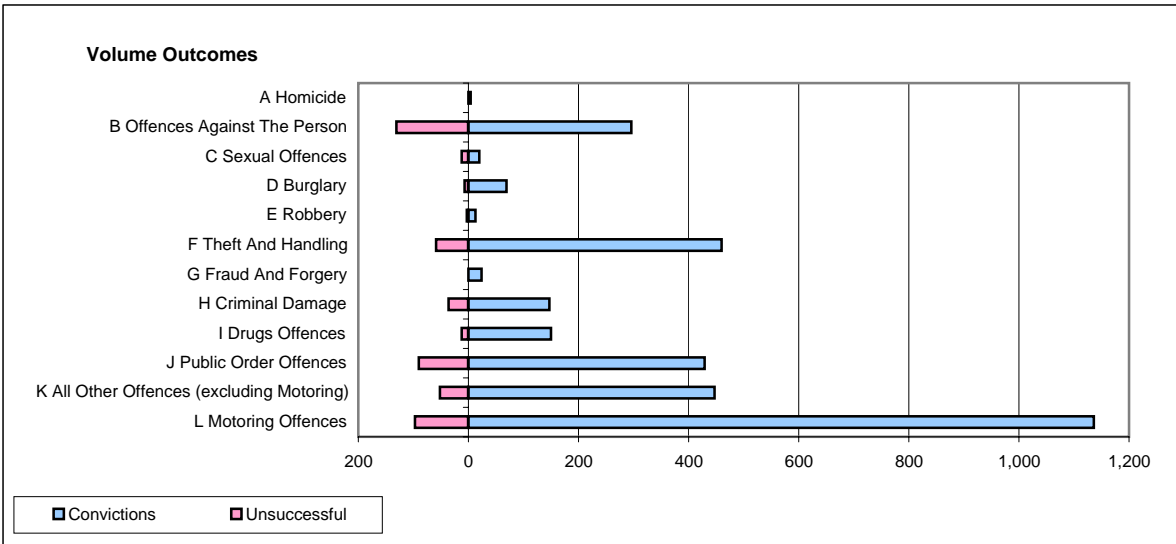
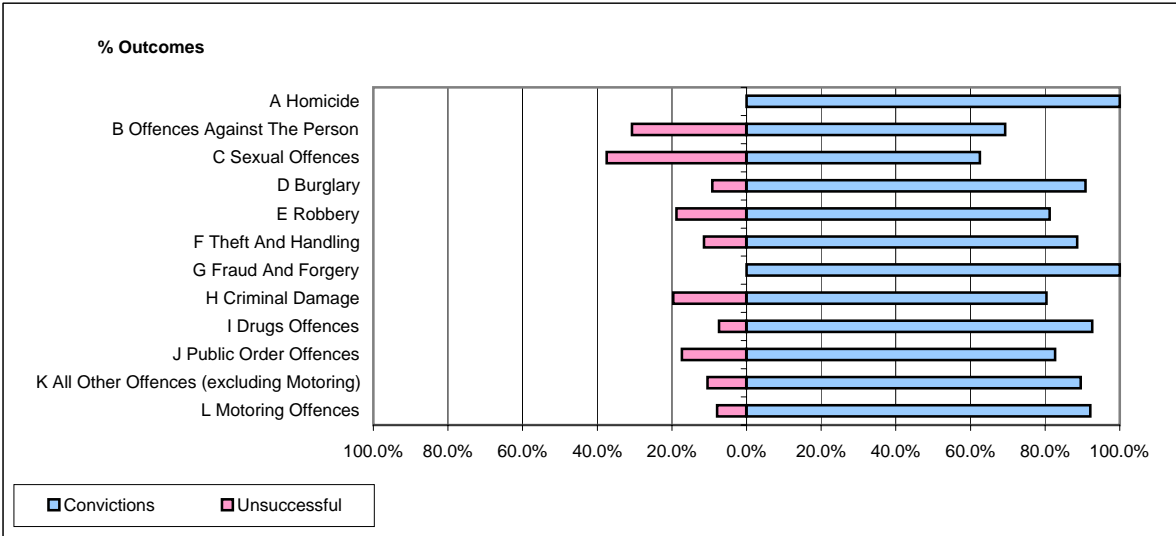


**CPS OUTCOMES BY PRINCIPAL OFFENCE CATEGORY**

**January 2008**

**P28-Northumbria**



	Convictions		Unsuccessful	
	Number of Defendants	%	Number of Defendants	%
<b>A Homicide</b>	<b>4</b>	<b>100.0%</b>	<b>0</b>	<b>0.0%</b>
<b>B Offences Against The Person</b>	<b>296</b>	<b>69.3%</b>	<b>131</b>	<b>30.7%</b>
<b>C Sexual Offences</b>	<b>20</b>	<b>62.5%</b>	<b>12</b>	<b>37.5%</b>
<b>D Burglary</b>	<b>69</b>	<b>90.8%</b>	<b>7</b>	<b>9.2%</b>
<b>E Robbery</b>	<b>13</b>	<b>81.3%</b>	<b>3</b>	<b>18.8%</b>
<b>F Theft And Handling</b>	<b>460</b>	<b>88.6%</b>	<b>59</b>	<b>11.4%</b>
<b>G Fraud And Forgery</b>	<b>24</b>	<b>100.0%</b>	<b>0</b>	<b>0.0%</b>
<b>H Criminal Damage</b>	<b>147</b>	<b>80.3%</b>	<b>36</b>	<b>19.7%</b>
<b>I Drugs Offences</b>	<b>150</b>	<b>92.6%</b>	<b>12</b>	<b>7.4%</b>
<b>J Public Order Offences</b>	<b>429</b>	<b>82.7%</b>	<b>90</b>	<b>17.3%</b>
<b>K All Other Offences (excluding Motoring)</b>	<b>447</b>	<b>89.6%</b>	<b>52</b>	<b>10.4%</b>
<b>L Motoring Offences</b>	<b>1,136</b>	<b>92.1%</b>	<b>97</b>	<b>7.9%</b>
<b>Admin Finalisations</b>	<b>0</b>	<b>0.0%</b>	<b>61</b>	<b>100.0%</b>
<b>TOTAL</b>	<b>3,195</b>	<b>85.1%</b>	<b>560</b>	<b>14.9%</b>